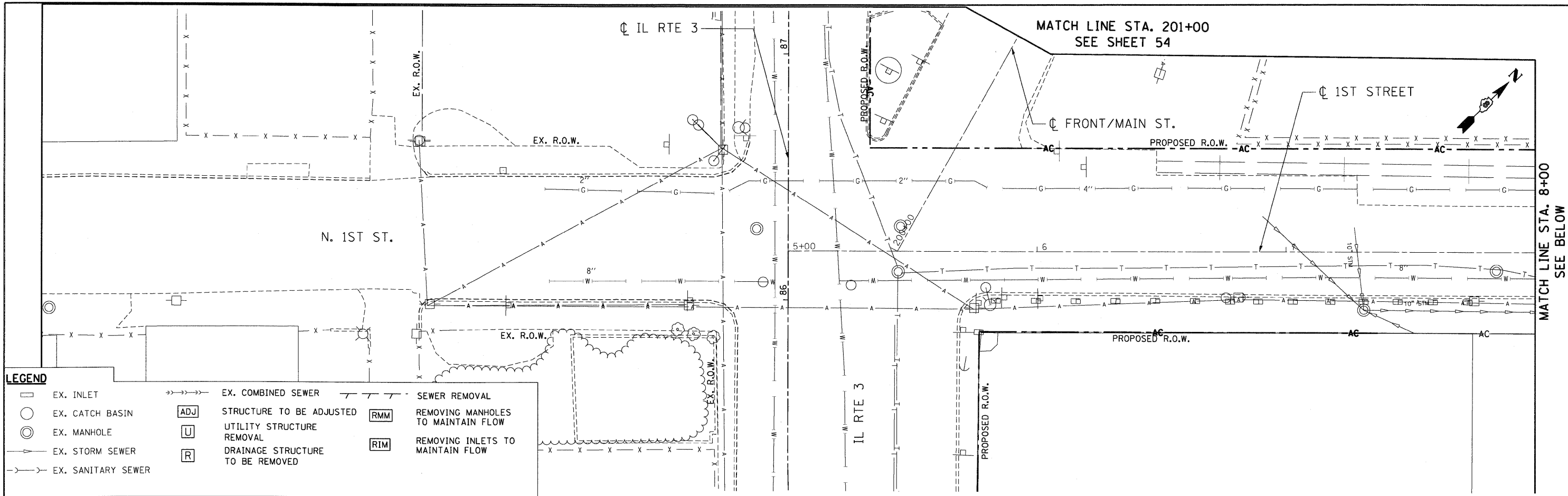
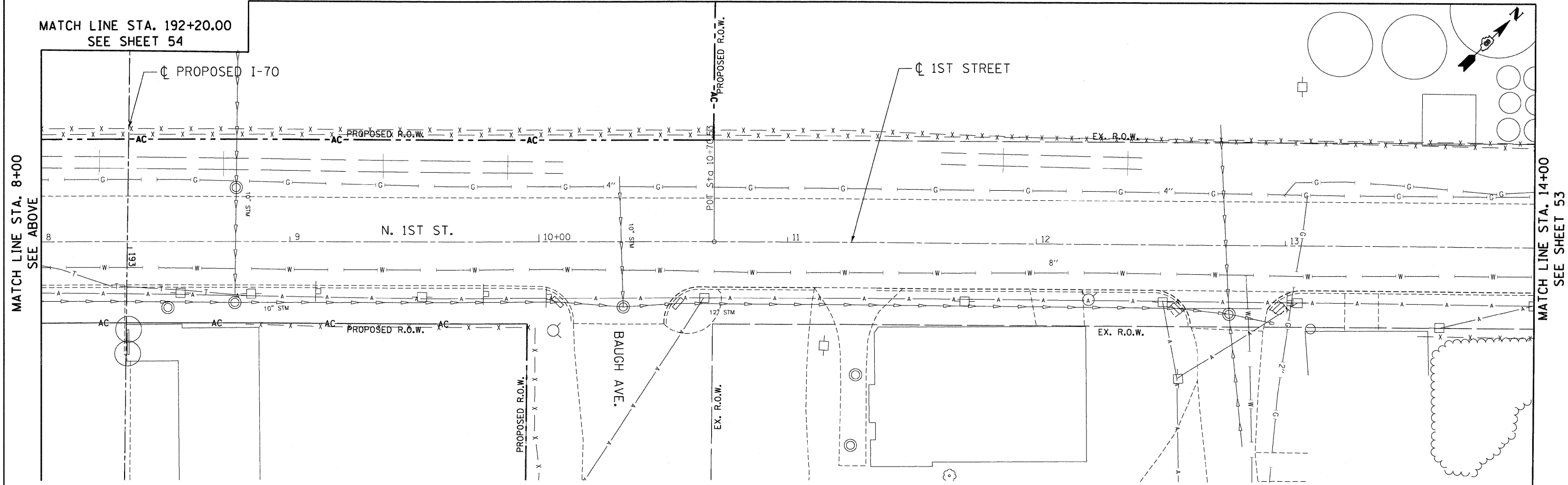


\\DBCDNN-93-MOTIF.LOJN, \\DBCDNN-93-BORRE.LOJN, \\DBCDNN-93-PK.LOJN, \\DBCDNN-93-LEGEND.LOJN, \\DBCDNN-93-REMOVAL.LOJN, \\DBCDNN-93-DRAINAGE.LOJN, \\DBCDNN-93-LINDSEY.LOJN, \\DBCDNN-93-TOPD.LOJN, \\DBCDNN-93-GEOMETRICS.LOJN, \\DBCDNN-93-TOPD2.LOJN, \\DBCDNN-93-MOTIF.LOJN, \\DBCDNN-93-161818B BONDHUD CD-TC-WORKSPACE\\BONDHUD\\N-FS-204410-TRMS.07-2202-20866-001\\CIVIL\\CAD\\93 ALL CONTRACTS\\CDMA SHEETS CONTRACT 93\\DBCDNN-93-SHT-DRNUTLE-9000.DWG



**LEGEND**

EX. INLET	EX. COMBINED SEWER	SEWER REMOVAL
EX. CATCH BASIN	STRUCTURE TO BE ADJUSTED	REMOVING MANHOLES TO MAINTAIN FLOW
EX. MANHOLE	UTILITY STRUCTURE REMOVAL	REMOVING INLETS TO MAINTAIN FLOW
EX. STORM SEWER	DRAINAGE STRUCTURE TO BE REMOVED	
EX. SANITARY SEWER		



FILE NAME =  
#FILEL#

TENG & ASSOCIATES, INC.  
ENGINEERS/ARCHITECTS/PLANNERS  
CHICAGO, ILLINOIS

USER NAME = #USER#	DESIGNED - JB	REVISED -
PLOT SCALE = #SCALE#	DRAWN - JB	REVISED -
PLOT DATE = #DATE#	CHECKED - ACL	REVISED -
	DATE - 10/09/09	REVISED -

**STATE OF ILLINOIS**  
**DEPARTMENT OF TRANSPORTATION**  
I-70 CONNECTION

**EXISTING DRAINAGE & UTILITIES**  
**1ST STREET / FRONT STREET**  
**IL ROUTE 3 TO STA. 14+00.00**

SCALE: 1"=20'

SHEET NO. OF SHEETS STA. TO STA.

F.A.P. RTE.	SECTION	COUNTY	TOTAL SHEETS	SHEET NO.
9153	82-1K	ST. CLAIR	107	52
FED. ROAD DIST. NO.			ILLINOIS FED. AID PROJECT	