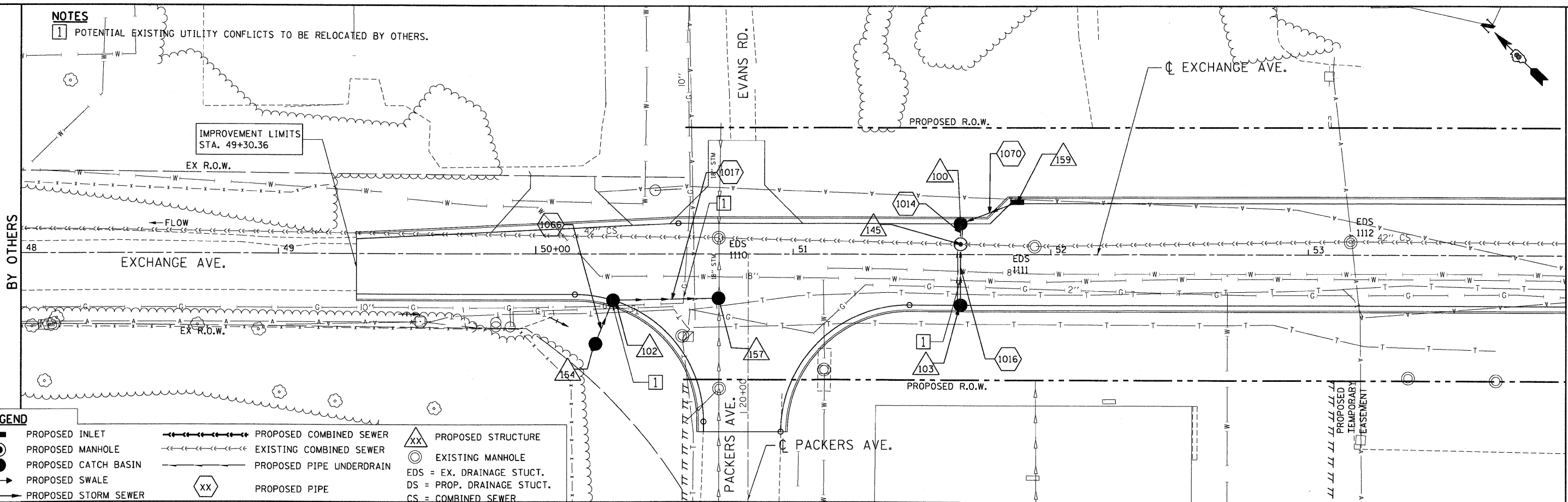


PLAN	SURVEYED	DATE
	PLANNED	
	NOTED	
	BY	
	NO.	
	NO.	
	NO.	
	NO.	

PROF ILE	SURVEYED	DATE
	PLANNED	
	NOTED	
	BY	
	NO.	
	NO.	
	NO.	
	NO.	

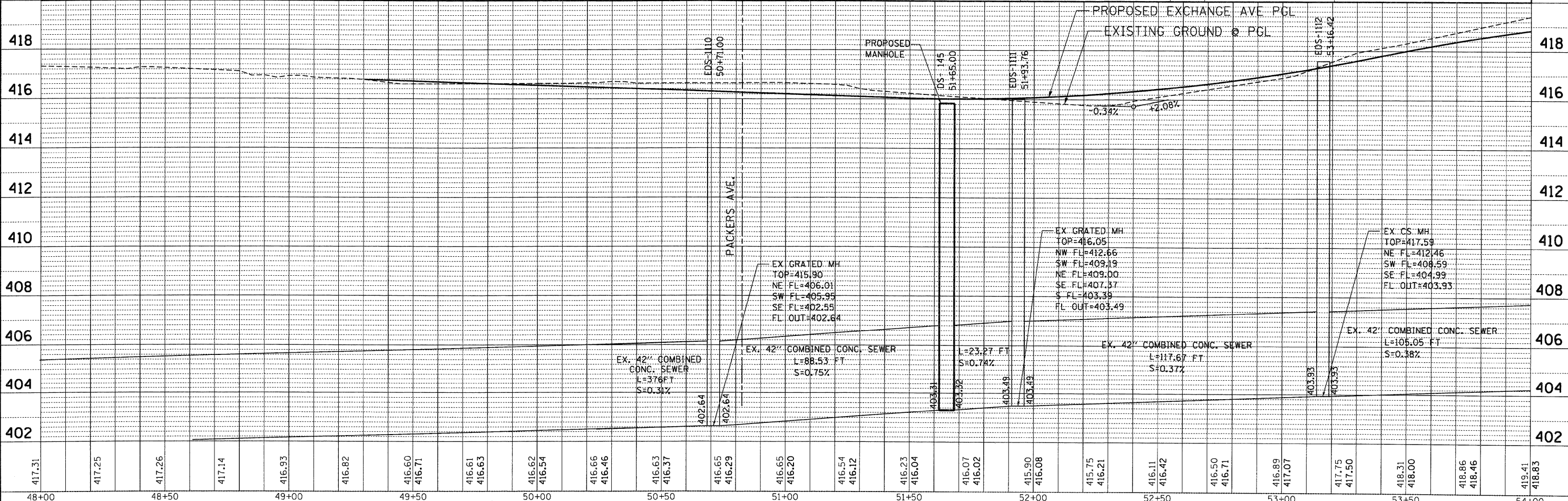
10-14-2009, 16:18:28 BONDHUJO
 C:\IC-WORKSPACE\BONDHUJO\N\F-004\I-70-TRANS-07-2282-20866-001\CIVIL\CAD\99 ALL CONTRACTS\CONNSHEETS\CONTRACT 03\BDCONN-03-SHT-DRN\I-70-4600.DGN

NOTES
 1 POTENTIAL EXISTING UTILITY CONFLICTS TO BE RELOCATED BY OTHERS.



LEGEND

—●—	PROPOSED INLET	—●—	PROPOSED COMBINED SEWER	XX	PROPOSED STRUCTURE
—○—	PROPOSED MANHOLE	—●—	EXISTING COMBINED SEWER	○	EXISTING MANHOLE
●	PROPOSED CATCH BASIN	—	PROPOSED PIPE UNDERDRAIN	EDS	EX. DRAINAGE STUCT.
—	PROPOSED SWALE	—	PROPOSED PIPE	DS	PROP. DRAINAGE STUCT.
—	PROPOSED STORM SEWER	XX	PROPOSED PIPE	CS	COMBINED SEWER



FILE NAME =	USER NAME = #USER#	DESIGNED - MMCG	REVISED -	STATE OF ILLINOIS DEPARTMENT OF TRANSPORTATION I-70 CONNECTION	PROPOSED DRAINAGE PLAN & PROFILE EXCHANGE AVENUE STA. 48 + 00.00 TO STA. 54 + 00.00	F.A.P. RTE.	SECTION	COUNTY	TOTAL SHEETS	SHEET NO.
#FILEL#	PLOT SCALE = #SCALE#	DRAWN - MMCG	REVISED -			9153	82-K	ST. CLAIR	107	55
	CHECKED - TKL	REVISIED -				CONTRACT NO. 76C40				
	PLOT DATE = #DATE#	DATE - 10/09/09	REVISED -			FED. ROAD DIST. NO. ILLINOIS FED. AID PROJECT				



SCALE: HORIZ. 1"=20' VERT. 1"=2' STA. TO STA.

MATCH LINE STA. 54+00
SEE SHEET 56