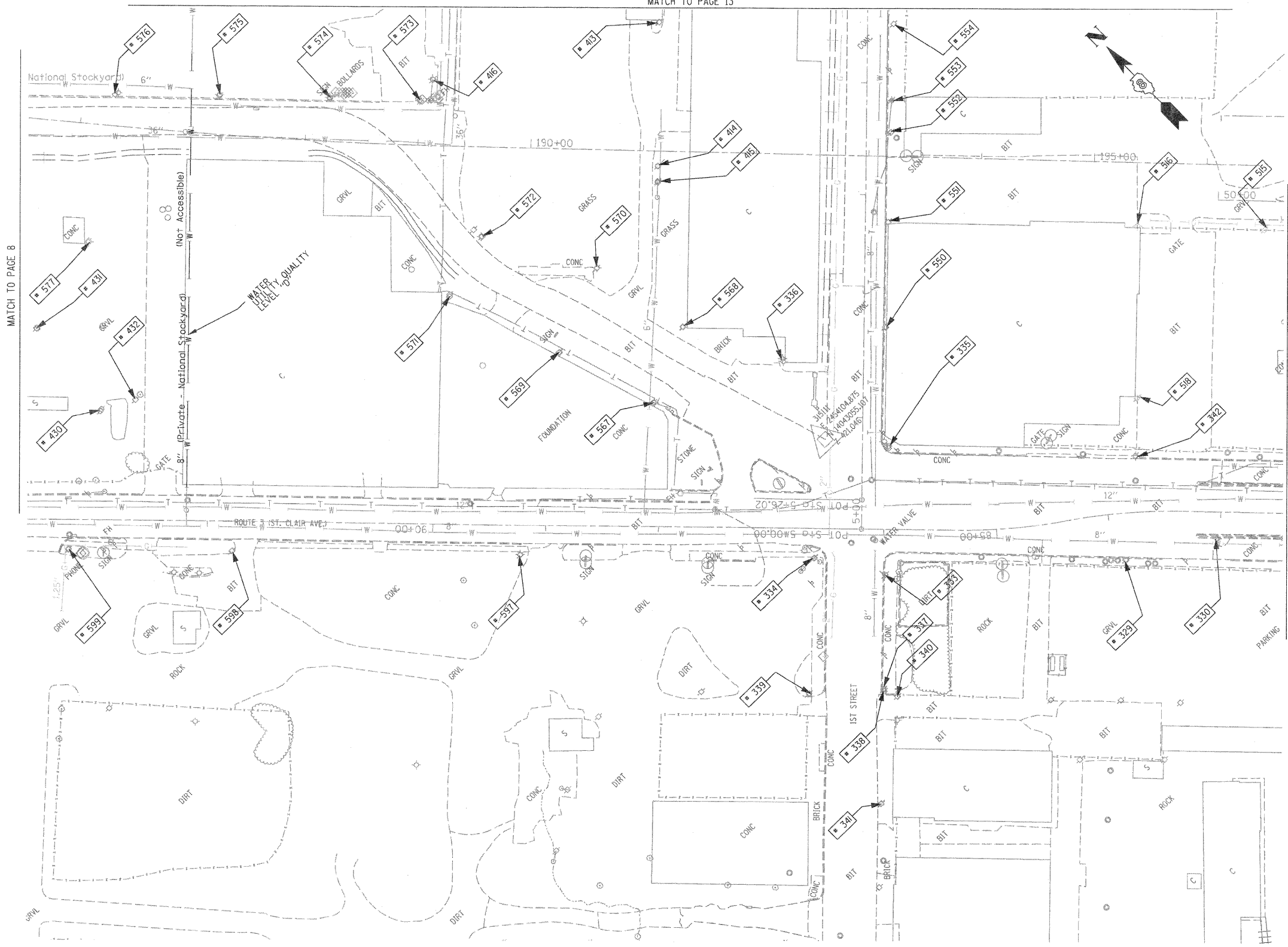


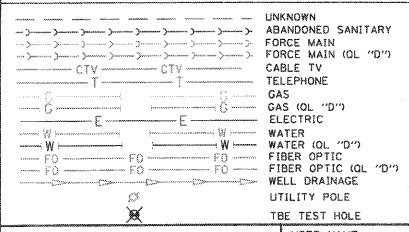
MATCH TO PAGE 13



TBE Pole Number	Approximate Location	Identification # on Pole	Utilities Attached to Poles	Utility Owners	Notes: Additional Items Attached to Poles
329	242' CL FIRST & ST. CLAIR	19032	ELECTRIC / FIBER	AMEREN ELECTRIC	E.W. LIGHT
330	323' CL FIRST & ST. CLAIR	723648	ELECTRIC	AMEREN ELECTRIC	SW LIGHT
333	SW CORNER FIRST & ST. CLAIR	NO TAG	TELEPHONE	AT&T	
334	NW CORNER FIRST & ST. CLAIR	19033	ELECTRIC/FIBER	AMEREN ELECTRIC	LIGHT & GUY S.
335	SE CORNER FIRST & ST. CLAIR	726190	ELECTRIC	AMEREN ELECTRIC	2 GUY E.
336	NE CORNER FIRST & ST. CLAIR	739142	NO UTILITIES		LIGHT NW
337	153' S. OF ST. CLAIR	NO TAG	NO UTILITIES		
338	156' S. OF ST. CLAIR	723675	TELEPHONE, ELECTRIC	AT&T, AMEREN ELECTRIC	
339	156' S. OF ST. CLAIR	814	TELEPHONE	AT&T	
340	158' S. OF ST. CLAIR	NO TAG	NO UTILITIES		
341	257' S. OF ST. CLAIR	723684	TELEPHONE, ELECTRIC	AT&T, AMEREN ELECTRIC	TRANSFORMER
342	225' E. OF FIRST ON N. ST. CLAIR	723646	ELECTRIC	AMEREN ELECTRIC	LIGHT N.S.
413	W. OF POLE 412	NO TAG	ELECTRIC	AMEREN ELECTRIC	
414	SW OF POLE 413	NO TAG	ELECTRIC	AMEREN ELECTRIC	
415	SW OF POLE 414	NO TAG	ELECTRIC	AMEREN ELECTRIC	GUY - SW
416	N OF POLE 414	NO TAG	TELEPHONE	AT&T	GUY - W
430	SW OF POLE 577	NO TAG	ELECTRIC	AMEREN ELECTRIC	ELECTRIC SERVICE
431	N OF POLE 430	NO TAG	ELECTRIC	AMEREN ELECTRIC	LIGHT, METER
432	S OF POLE 430	747040	ELECTRIC	AMEREN ELECTRIC	LIGHT
515	NW OF POLE 366	723644	NO UTILITIES		LIGHT
516	W OF POLE 393 NW OF POLE 515	NO TAG	ELECTRIC	AMEREN ELECTRIC	LIGHT
518	NE OF POLE 342	21 2488	ELECTRIC	AMEREN ELECTRIC	LIGHT
550	170' N OF ST. CLAIR & 1ST ST. CL. ON E/S	726191	ELECTRIC, TELEPHONE	AT&T, AMEREN ELECTRIC	
551	265' N OF ST. CLAIR & 1ST ST. CL. ON E/S	726192	ELECTRIC, TELEPHONE	AT&T, AMEREN ELECTRIC	
552	345' N OF ST. CLAIR & 1ST ST. CL. ON E/S	726193	ELECTRIC, TELEPHONE	AT&T, AMEREN ELECTRIC	TRANSFORMER
553	373' N OF ST. CLAIR & 1ST ST. CL. ON E/S	NO TAG	TELEPHONE	AT&T	
554	442' N OF ST. CLAIR & 1ST ST. CL. ON E/S	726194	ELECTRIC, TELEPHONE	AT&T, AMEREN ELECTRIC	
567	197' N OF FRONT ST & 1ST ST. CL. ON W/S OF FRONT	739143	ELECTRIC	AMEREN ELECTRIC	LIGHT
568	206' N OF FRONT ST & 1ST ST. CL. ON E/S OF FRONT	739141	ELECTRIC	AMEREN ELECTRIC	
569	289' N OF FRONT ST & 1ST ST. CL. ON W/S OF FRONT	NO TAG	ELECTRIC	AMEREN ELECTRIC	
570	337' N OF FRONT ST & 1ST ST. CL. ON E/S OF FRONT	739140	ELECTRIC	AMEREN ELECTRIC	
571	395' N OF FRONT ST & 1ST ST. CL. ON W/S OF FRONT	NO TAG	ELECTRIC	AMEREN ELECTRIC	
572	408' N OF FRONT ST & 1ST ST. CL. ON E/S OF FRONT	739139	ELECTRIC	AMEREN ELECTRIC	LIGHT
573	529' N OF FRONT ST & 1ST ST. CL. ON E/S OF FRONT	739137	ELECTRIC, TELEPHONE	AT&T, AMEREN ELECTRIC	LIGHT & GUY - S.E.
574	581' N OF FRONT ST & 1ST ST. CL. ON E/S OF FRONT	739136	ELECTRIC, TELEPHONE	AT&T, AMEREN ELECTRIC	
575	677' N OF FRONT ST & 1ST ST. CL. ON E/S OF FRONT	739135	ELECTRIC, TELEPHONE	AT&T, AMEREN ELECTRIC	LIGHT
576	767' N OF FRONT ST & 1ST ST. CL. ON E/S OF FRONT	739134	ELECTRIC, TELEPHONE	AT&T, AMEREN ELECTRIC	
577	790' N OF FRONT ST & 1ST ST. CL. ON W/S OF FRONT	747038	ELECTRIC	AMEREN ELECTRIC	LIGHT
597	301' W OF 1ST ST. CL. ON S/S OF ST. CLAIR	19034	ELECTRIC, FIBER	AMEREN ELECTRIC	LIGHT
598	556' W OF 1ST ST. ON S/S OF ST. CLAIR	19035	ELECTRIC, FIBER	AMEREN ELECTRIC	LIGHT
599	701' W OF 1ST ST. CL. ON S/S OF ST. CLAIR	723694	ELECTRIC, FIBER	AMEREN ELECTRIC	LIGHT

MATCH TO PAGE 8

MATCH TO PAGE 10



Utilities shown in color on these plans as depicted in the legend have been investigated by TBE Group, Inc in accordance with SUE Industry Standards. All other information shown has been provided to TBE Group, Inc by others. TBE's SUE field investigation was finished on 1/22/09. Changes to utilities after this date may have been made and therefore may result in variances from this plan. Consideration should be given to updating this plan if deemed advisable prior to final design and construction. *

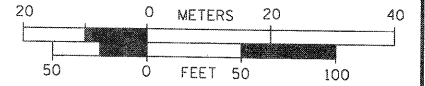
*Plans provided in black and white, color copies available upon request.

ALL UTILITIES SHOWN QUALITY LEVEL "B" UNLESS NOTED OTHERWISE.

Utility Quality Level "A" : Test Hole
 Utility Quality Level "B" : Designating
 Utility Quality Level "C" : Researching with Survey
 Utility Quality Level "D" : Records Research



TBE GROUP, INC.
 CIVIL ENGINEERING • TRANSPORTATION • ENVIRONMENTAL
 PLANNING • UTILITY ENGINEERING/LOCATING



Checked By: _____
 Date: _____

FILE NAME *	USER NAME *	DESIGNED EG, IP, LP	REVISED
#FILE#	PLOT SCALE = 1" = 50'	DRAWN KLC	REVISED
	PLOT DATE = #DATE#	CHECKED JB	REVISED
	DATE 2/13/09		REVISED

STATE OF ILLINOIS
 DEPARTMENT OF TRANSPORTATION

Mississippi River Bridge Project

SCALE: SHEET NO. STA. TO STA.

F.A. RTE.	SECTION	COUNTY	TOTAL SHEETS	SHEET NO.
		St. Clair	107	66
PTB NO. 147-038				
FED. ROAD DIST. NO. ILLINOIS Job No.: 0-98-061-08				

TBE Job No. IL09500601-602,603,604-607
 SUE Plan Page: 9 of 30