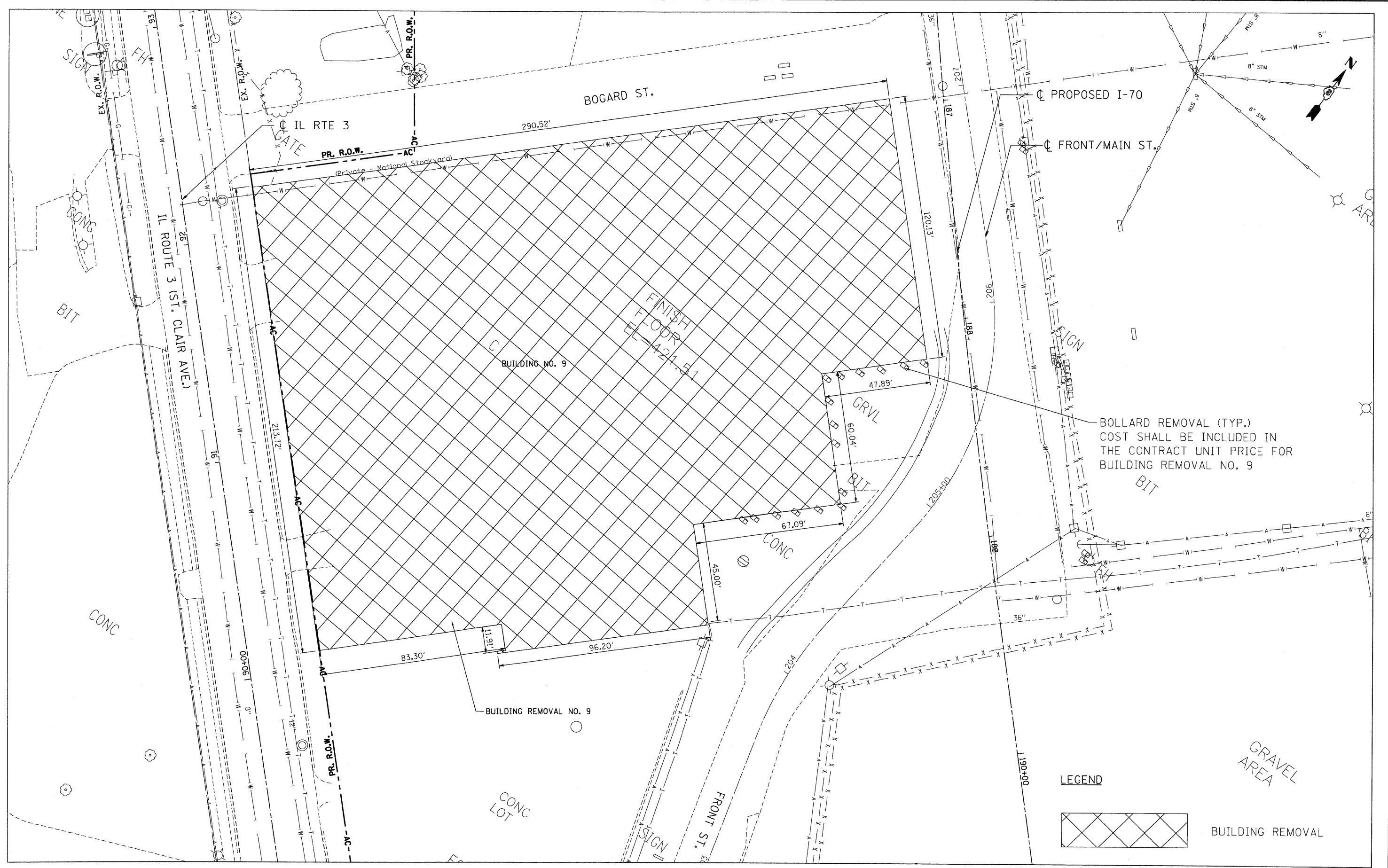


\S:\CONN-99-01\FILE1.DGN, \S:\CONN-99-01\FILE2.DGN, \S:\CONN-99-01\FILE3.DGN, \S:\CONN-99-01\FILE4.DGN, \S:\CONN-99-01\FILE5.DGN, \S:\CONN-99-01\FILE6.DGN, \S:\CONN-99-01\FILE7.DGN, \S:\CONN-99-01\FILE8.DGN, \S:\CONN-99-01\FILE9.DGN, \S:\CONN-99-01\FILE10.DGN, \S:\CONN-99-01\FILE11.DGN, \S:\CONN-99-01\FILE12.DGN, \S:\CONN-99-01\FILE13.DGN, \S:\CONN-99-01\FILE14.DGN, \S:\CONN-99-01\FILE15.DGN, \S:\CONN-99-01\FILE16.DGN, \S:\CONN-99-01\FILE17.DGN, \S:\CONN-99-01\FILE18.DGN, \S:\CONN-99-01\FILE19.DGN, \S:\CONN-99-01\FILE20.DGN, \S:\CONN-99-01\FILE21.DGN, \S:\CONN-99-01\FILE22.DGN, \S:\CONN-99-01\FILE23.DGN, \S:\CONN-99-01\FILE24.DGN, \S:\CONN-99-01\FILE25.DGN, \S:\CONN-99-01\FILE26.DGN, \S:\CONN-99-01\FILE27.DGN, \S:\CONN-99-01\FILE28.DGN, \S:\CONN-99-01\FILE29.DGN, \S:\CONN-99-01\FILE30.DGN, \S:\CONN-99-01\FILE31.DGN, \S:\CONN-99-01\FILE32.DGN, \S:\CONN-99-01\FILE33.DGN, \S:\CONN-99-01\FILE34.DGN, \S:\CONN-99-01\FILE35.DGN, \S:\CONN-99-01\FILE36.DGN, \S:\CONN-99-01\FILE37.DGN, \S:\CONN-99-01\FILE38.DGN, \S:\CONN-99-01\FILE39.DGN, \S:\CONN-99-01\FILE40.DGN, \S:\CONN-99-01\FILE41.DGN, \S:\CONN-99-01\FILE42.DGN, \S:\CONN-99-01\FILE43.DGN, \S:\CONN-99-01\FILE44.DGN, \S:\CONN-99-01\FILE45.DGN, \S:\CONN-99-01\FILE46.DGN, \S:\CONN-99-01\FILE47.DGN, \S:\CONN-99-01\FILE48.DGN, \S:\CONN-99-01\FILE49.DGN, \S:\CONN-99-01\FILE50.DGN, \S:\CONN-99-01\FILE51.DGN, \S:\CONN-99-01\FILE52.DGN, \S:\CONN-99-01\FILE53.DGN, \S:\CONN-99-01\FILE54.DGN, \S:\CONN-99-01\FILE55.DGN, \S:\CONN-99-01\FILE56.DGN, \S:\CONN-99-01\FILE57.DGN, \S:\CONN-99-01\FILE58.DGN, \S:\CONN-99-01\FILE59.DGN, \S:\CONN-99-01\FILE60.DGN, \S:\CONN-99-01\FILE61.DGN, \S:\CONN-99-01\FILE62.DGN, \S:\CONN-99-01\FILE63.DGN, \S:\CONN-99-01\FILE64.DGN, \S:\CONN-99-01\FILE65.DGN, \S:\CONN-99-01\FILE66.DGN, \S:\CONN-99-01\FILE67.DGN, \S:\CONN-99-01\FILE68.DGN, \S:\CONN-99-01\FILE69.DGN, \S:\CONN-99-01\FILE70.DGN, \S:\CONN-99-01\FILE71.DGN, \S:\CONN-99-01\FILE72.DGN, \S:\CONN-99-01\FILE73.DGN, \S:\CONN-99-01\FILE74.DGN, \S:\CONN-99-01\FILE75.DGN, \S:\CONN-99-01\FILE76.DGN, \S:\CONN-99-01\FILE77.DGN, \S:\CONN-99-01\FILE78.DGN, \S:\CONN-99-01\FILE79.DGN, \S:\CONN-99-01\FILE80.DGN, \S:\CONN-99-01\FILE81.DGN, \S:\CONN-99-01\FILE82.DGN, \S:\CONN-99-01\FILE83.DGN, \S:\CONN-99-01\FILE84.DGN, \S:\CONN-99-01\FILE85.DGN, \S:\CONN-99-01\FILE86.DGN, \S:\CONN-99-01\FILE87.DGN, \S:\CONN-99-01\FILE88.DGN, \S:\CONN-99-01\FILE89.DGN, \S:\CONN-99-01\FILE90.DGN, \S:\CONN-99-01\FILE91.DGN, \S:\CONN-99-01\FILE92.DGN, \S:\CONN-99-01\FILE93.DGN, \S:\CONN-99-01\FILE94.DGN, \S:\CONN-99-01\FILE95.DGN, \S:\CONN-99-01\FILE96.DGN, \S:\CONN-99-01\FILE97.DGN, \S:\CONN-99-01\FILE98.DGN, \S:\CONN-99-01\FILE99.DGN, \S:\CONN-99-01\FILE100.DGN



FILE NAME = #FILE#
 USER NAME = #USER#
 PLOT SCALE = #SCALE#
 PLOT DATE = #DATE#

DESIGNED - JB
 DRAWN - JB
 CHECKED - ACL
 DATE - 10/09/09

REVISED -
 REVISED -
 REVISED -
 REVISED -

STATE OF ILLINOIS
DEPARTMENT OF TRANSPORTATION
 I-70 CONNECTION

BUILDING DEMOLITION PLAN
BUILDING NO. 9

SCALE: 1"=20' SHEET NO. OF SHEETS STA. TO STA.

F.A.P. RTE.	SECTION	COUNTY	TOTAL SHEETS	SHEET NO.
9153	82-1K	ST. CLAIR	107	79
CONTRACT NO. 76C40				
FED. ROAD DIST. NO. [ILLINOIS] FED. AID PROJECT				

