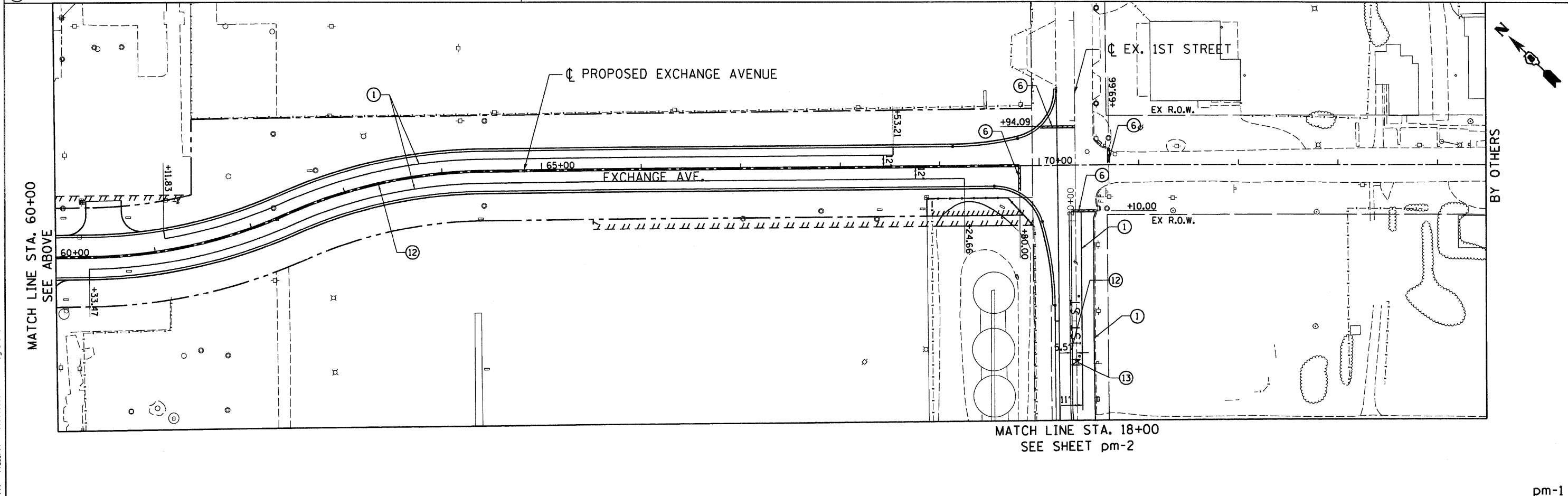


**PAVEMENT MARKING LEGEND**

|                             |  |
|-----------------------------|--|
| ① POLYUREA - LINE 4" WHITE  | ⑨ POLYUREA - LINE 6" YELLOW                            |
| ② POLYUREA - LINE 5" WHITE  | ⑩ POLYUREA - LINE 8" YELLOW                            |
| ③ POLYUREA - LINE 6" WHITE  | ⑪ POLYUREA - LINE 12" YELLOW                           |
| ④ POLYUREA - LINE 8" WHITE  | ⑫ POLYUREA - DOUBLE LINE 4" YELLOW                     |
| ⑤ POLYUREA - LINE 12" WHITE | ⑬ POLYUREA - LETTERS AND SYMBOLS                       |
| ⑥ POLYUREA - LINE 24" WHITE | ◆ RAISED REFLECTIVE PAVEMENT MARKERS (TWO-WAY AMBER)   |
| ⑦ POLYUREA - LINE 4" YELLOW | ▲ RAISED REFLECTIVE PAVEMENT MARKERS (ONE-WAY CRYSTAL) |
| ⑧ POLYUREA - LINE 5" YELLOW | ▲ RAISED REFLECTIVE PAVEMENT MARKERS (ONE-WAY AMBER)   |



|   |                      |                 |           |  |  |           |           |                           |         |                    |              |           |
|---|----------------------|-----------------|-----------|--|--|-----------|-----------|---------------------------|---------|--------------------|--------------|-----------|
| FILE NAME =   | USER NAME = #USER#   | DESIGNED - AAB  | REVISED - | <b>STATE OF ILLINOIS</b><br><b>DEPARTMENT OF TRANSPORTATION</b><br>I-70 CONNECTION | <b>PAVEMENT MARKING</b><br><b>EXCHANGE AVE</b> |           |           | F.A.P. RTE.               | SECTION | COUNTY             | TOTAL SHEETS | SHEET NO. |
| #FILE#  | PLOT SCALE = #SCALE# | DRAWN - MNR     | REVISED - |  | 9153   | 82-1K     | ST. CLAIR | 107                       | 83      |                    |              |           |
| ABNA ENGINEERING INC.<br>PROFESSIONAL ENGINEERS<br>EAST ST. LOUIS, ILLINOIS | PLOT DATE = #DATE#   | CHECKED - DPD   | REVISED - |  | SCALE: 1"=50'                                  | SHEET NO. | OF SHEETS | STA.                      | TO STA. | CONTRACT NO. 76C40 |              |           |
|   |                      | DATE - 10/09/09 | REVISED - |  |  |           |           | ILLINOIS FED. AID PROJECT |         |                    |              |           |

pm-1