

STATE OF ILLINOIS
DEPARTMENT OF TRANSPORTATION
DIVISION OF HIGHWAYS
PROPOSED
HIGHWAY PLANS

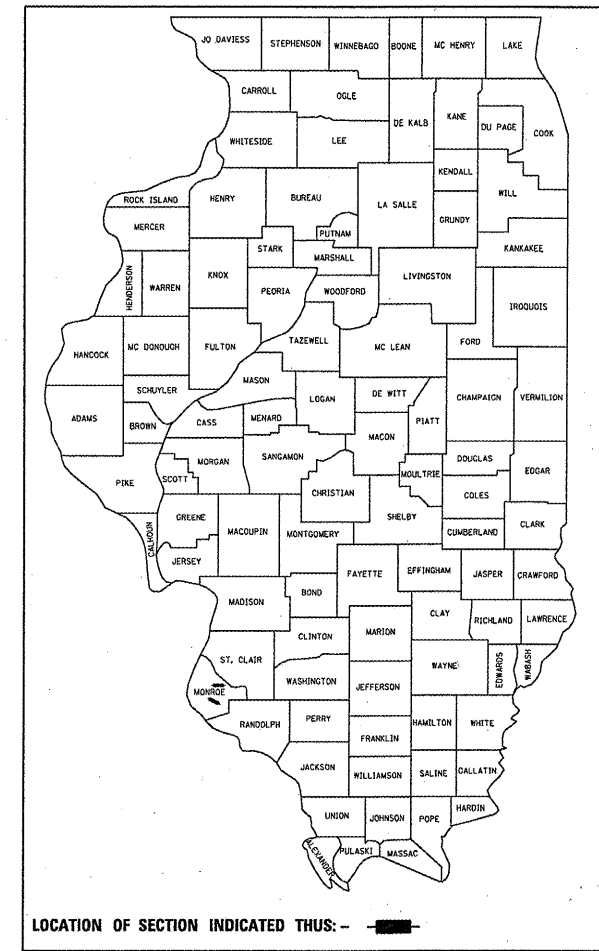
- INDEX OF SHEETS**
1. COVER SHEET
 2. GENERAL NOTES, SUMMARY OF QUANTITIES & SCHEDULES
 3. LOCATION MAPS
 - 4-5. TYPICAL ROADWAY SECTIONS
 6. DETAILS

STANDARDS

- 000001-05
- 642001-01
- 701006-03
- 701011-02
- 701301-03
- 701306-02
- 701311-03
- 701901-01
- 780001-02
- 701326-03**

| | | | | |
|--------------------------|---------------|--------------------|--------------|-----------|
| F.A.P. RTE. | SECTION | COUNTY | TOTAL SHEETS | SHEET NO. |
| * DIST 8 SHOULDER 2010-1 | | MONROE | 6 | 1 |
| FED. ROAD DIST. NO. | ILLINOIS | CONTRACT NO. 76D38 | | |
| * 829 & 14 | *6+1=7 | | | |

D-98-007-10



ADT

| | |
|----------------|--------------|
| IL. 156 | IL. 3 |
| 2200 (2008) | 8600 (2008) |
| 2800 (2030) | 10900 (2030) |
| SU = 6.8% | SU = 5.5% |
| MU = 4.5% | MU = 4.7% |

FUNCTIONAL CLASSIFICATION - MINOR ARTERIAL

STATE OF ILLINOIS
DEPARTMENT OF TRANSPORTATION
DIVISION OF HIGHWAYS

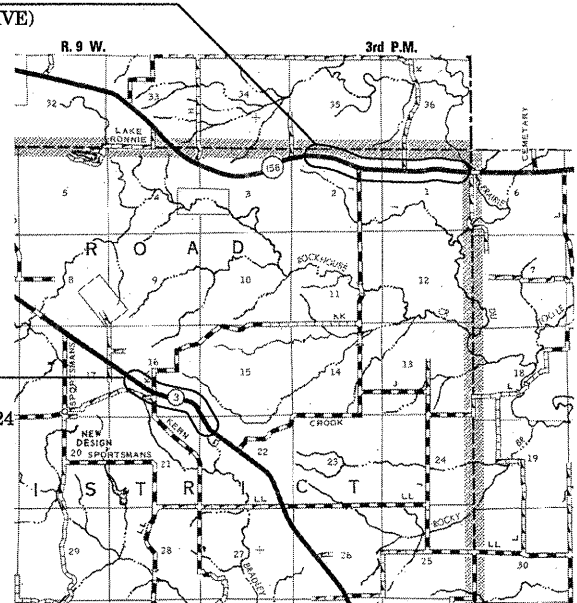
SUBMITTED Jan 22, 2010
Mary Jamies
DEPUTY DIRECTOR OF HIGHWAYS, REGION FIVE ENGINEER

March 19, 2010
Scott E. Stoll, P.E.
ENGINEER OF DESIGN AND ENVIRONMENT

March 19, 2010
Christine M. Reed
DIRECTOR OF HIGHWAYS, CHIEF ENGINEER

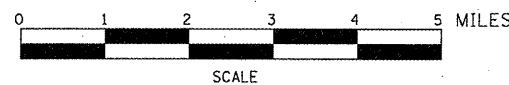
**PRINTED BY THE AUTHORITY
OF THE STATE OF ILLINOIS**

HOT MIX ASPHALT SHOULDERS & RUMBLE STRIPS
PROJECT BEGINS - STA. 266+20 (EDGEWATER DRIVE)
PROJECT ENDS - STA. 348+50

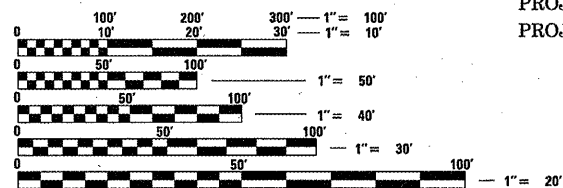


LOCATION MAP

NET LENGTH (IL. 156) - 8230.00 FT. = 1.559 MILES
NET LENGTH (IL. 3) - 3,299.50 FT. = 0.625 MILES
GROSS LENGTH - 11,529.50 FT. = 2.184 MILES



CENTERLINE RUMBLE STRIPS
PROJECT BEGINS - STA. 301+50.34
PROJECT OMISSION - STA. 309+79.45 TO STA. 326+69.24
PROJECT ENDS - STA. 351+39.63




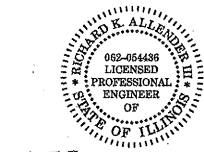
FULL SIZE PLANS HAVE BEEN PREPARED USING STANDARD ENGINEERING SCALES. REDUCED SIZED PLANS WILL NOT CONFORM TO STANDARD SCALES. IN MAKING MEASUREMENTS ON REDUCED PLANS, THE ABOVE SCALES MAY BE USED.

J.U.L.I.E.
JOINT UTILITY LOCATION INFORMATION FOR EXCAVATION
1-800-892-0123
OR 811

PROJECT ENGINEER - PATTI LEBEAU (618)-346-3179
PROJECT MANAGER - CHERYL KEPLAR (618)-346-3186

CONTRACT NO. 76D38

 **Allen Henderson & Associates, Inc.**
Civil and Structural Engineers Springfield, IL
62703 Phone: (217)544-8033 IL Design Firm
No. 184-001907



Richard K. Allender III
Expiration Date: 11/30/2011