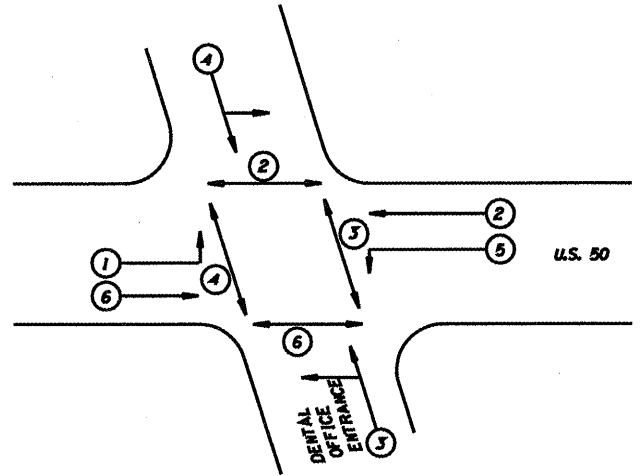
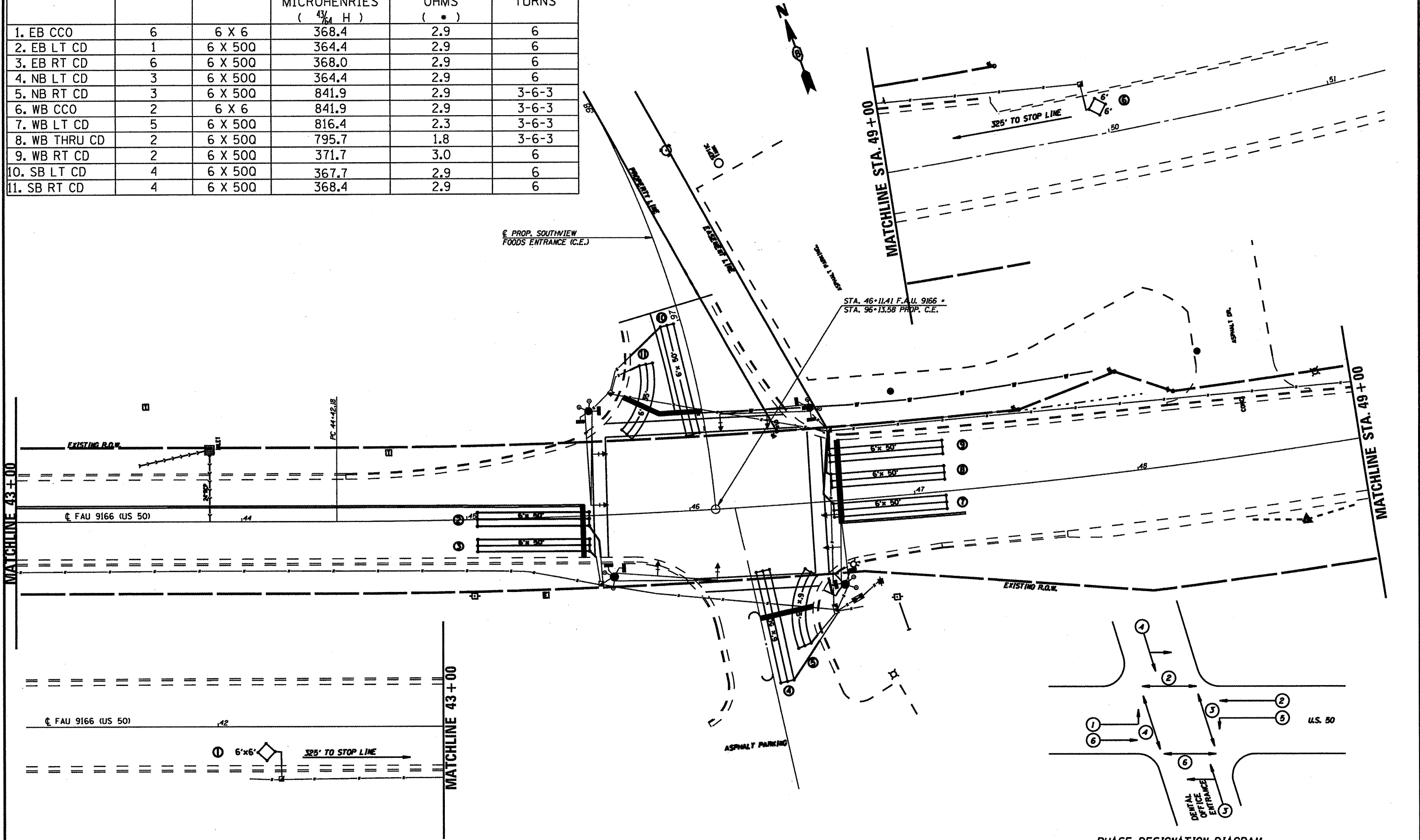


LOOP	PHASE (#)	FT. X FT.	CALCULATED INDUCTANCE MICROHENRIES ($\frac{43}{764} H$)	CALCULATED RESISTANCE OHMS (*)	REQUIRED # OF TURNS
1. EB CCO	6	6 X 6	368.4	2.9	6
2. EB LT CD	1	6 X 500	364.4	2.9	6
3. EB RT CD	6	6 X 500	368.0	2.9	6
4. NB LT CD	3	6 X 500	364.4	2.9	6
5. NB RT CD	3	6 X 500	841.9	2.9	3-6-3
6. WB CCO	2	6 X 6	841.9	2.9	3-6-3
7. WB LT CD	5	6 X 500	816.4	2.3	3-6-3
8. WB THRU CD	2	6 X 500	795.7	1.8	3-6-3
9. WB RT CD	2	6 X 500	371.7	3.0	6
10. SB LT CD	4	6 X 500	367.7	2.9	6
11. SB RT CD	4	6 X 500	368.4	2.9	6



FILE NAME *	USER NAME * alfordb	DESIGNED -	REVISED -
ca:\ps_work\psidot\alfordb\0174224\0878	69-shr-TSL.dgn	DRAWN -	REVISED -
	PLOT SCALE = 48,0000' / IN.	CHECKED -	REVISED -
	PLOT DATE = 3/2/2018	DATE -	REVISED -

**STATE OF ILLINOIS
DEPARTMENT OF TRANSPORTATION**

**TRAFFIC SIGNALS
US 50 @ SCHNUCK'S ENTRANCE**

SCALE: SHEET NO. OF SHEETS STA. TO STA.

FAU RTE.	SECTION	COUNTY	TOTAL SHEETS	SHEET NO.
	32RS-3, 31RS-3, 1RS-1	ST. CLAIR	56	95
ILLINOIS FED. AID PROJECT				

• FAU 9331/FAU 9166

CONTRACT NO. T6069