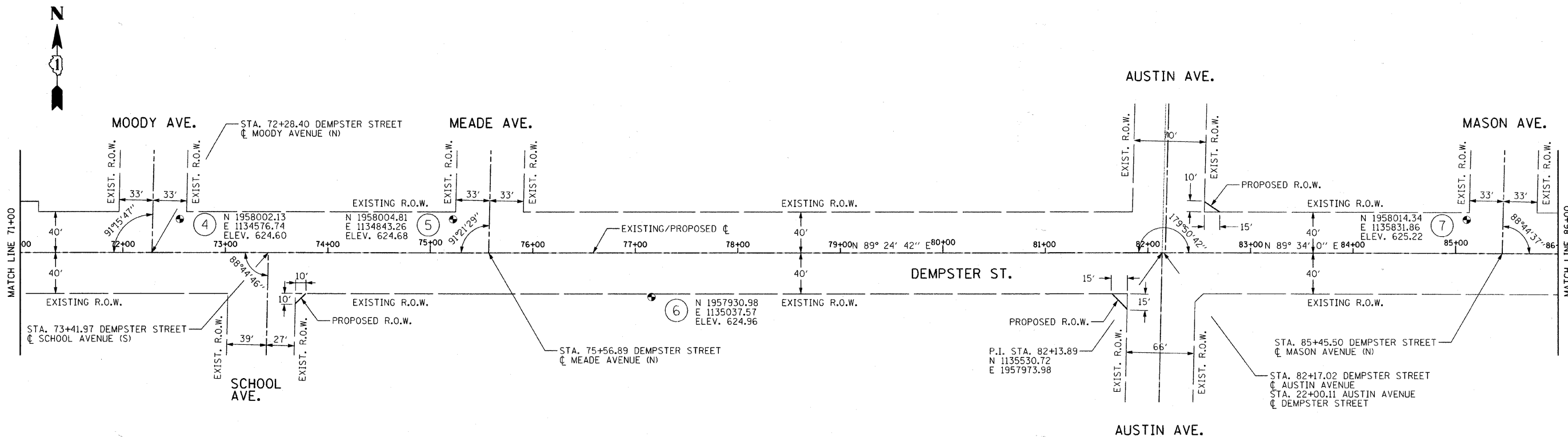
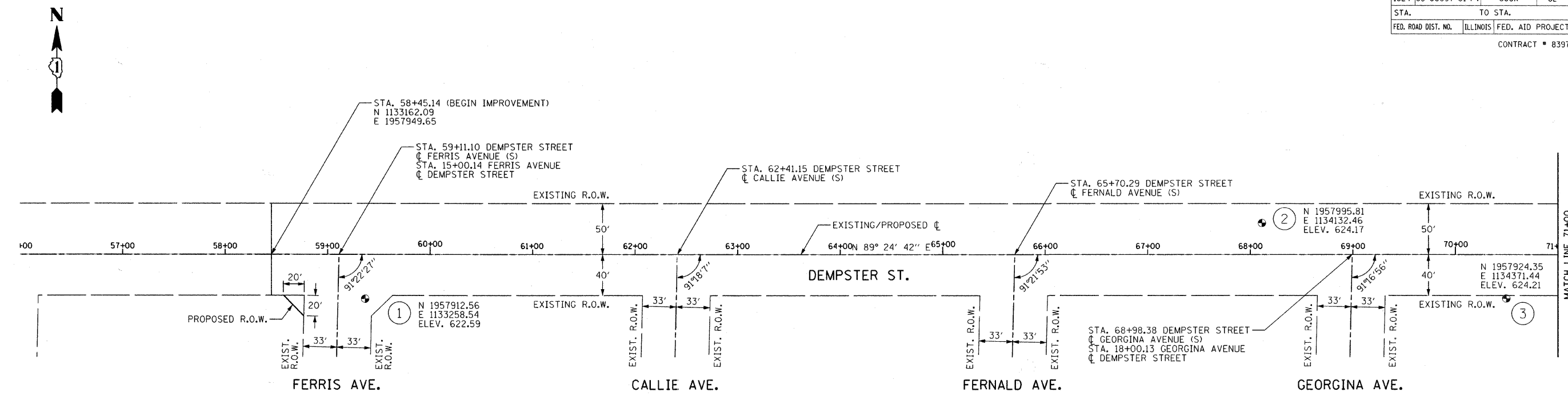


F.A.U. RTE.	SECTION	COUNTY	TOTAL SHEETS	SHEET NO.
1324	03-00097-01-PV	COOK	82	9
STA.	TO STA.			
FED. ROAD DIST. NO.	ILLINOIS	FED. AID PROJECT		CONTRACT # 83971



**CONTROL POINTS/BENCHMARKS:**

- |   |   |   |   |
|---|---|---|---|
| 1. CROSS IN CONCRETE<br>NORTH 1957912.56<br>EASTING 1133258.54<br>ELEVATION 622.59<br>OFFSET TO PROP. CL 43.24' | 3. CROSS IN CONCRETE<br>NORTH 1957924.35<br>EASTING 1134371.44<br>ELEVATION 624.21<br>OFFSET TO PROP. CL 42.88' | 5. CROSS IN CONCRETE<br>NORTH 1958004.81<br>EASTING 1134843.26<br>ELEVATION 624.68<br>OFFSET TO PROP. CL 32.73' | 7. CROSS IN CONCRETE<br>NORTH 1958014.34<br>EASTING 1135831.86<br>ELEVATION 625.22<br>OFFSET TO PROP. CL 32.91' |
| 2. CROSS IN CONCRETE<br>NORTH 1957995.81<br>EASTING 1134132.46<br>ELEVATION 624.17<br>OFFSET TO PROP. CL 31.03' | 4. CROSS IN CONCRETE<br>NORTH 1958002.13<br>EASTING 1134576.74<br>ELEVATION 624.60<br>OFFSET TO PROP. CL 32.79' | 6. CROSS IN CONCRETE<br>NORTH 1957930.98<br>EASTING 1135037.57<br>ELEVATION 624.96<br>OFFSET TO PROP. CL 43.09' |   |

REVISIONS	
NAME	DATE

ILLINOIS DEPARTMENT OF TRANSPORTATION  
IL RTE 58 (DEMPSTER ST) IMPROVEMENTS  
HORIZONTAL ALIGNMENT  
AND TIES

SCALE: 1" = 50'  
DATE: 10-16-09

DRAWN BY: DMB  
CHECKED BY: NKU

**McDonough Associates Inc.**  
Engineers / Architects