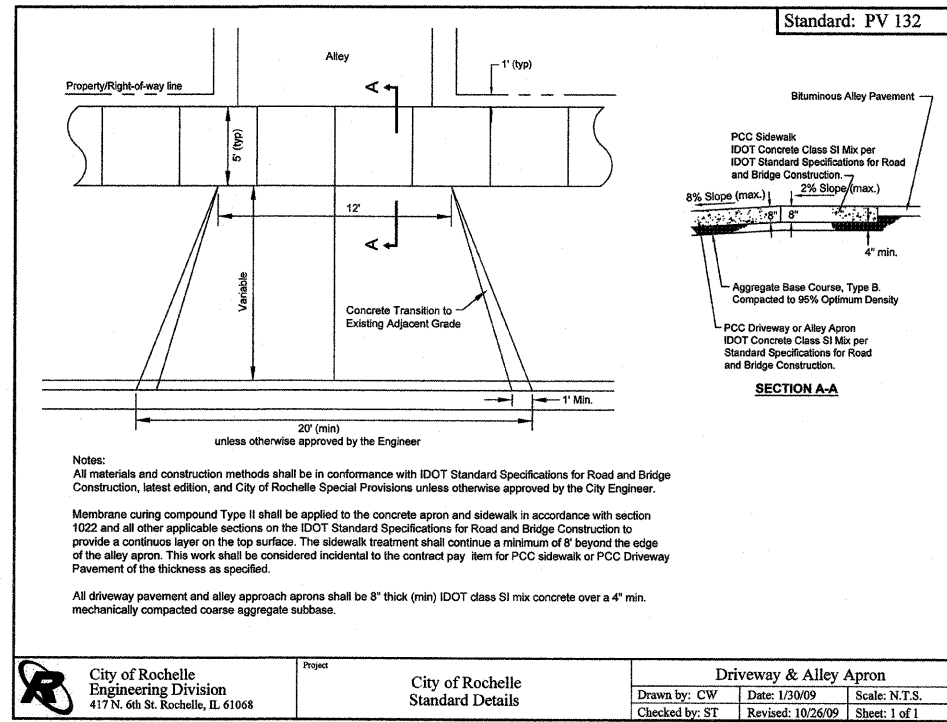
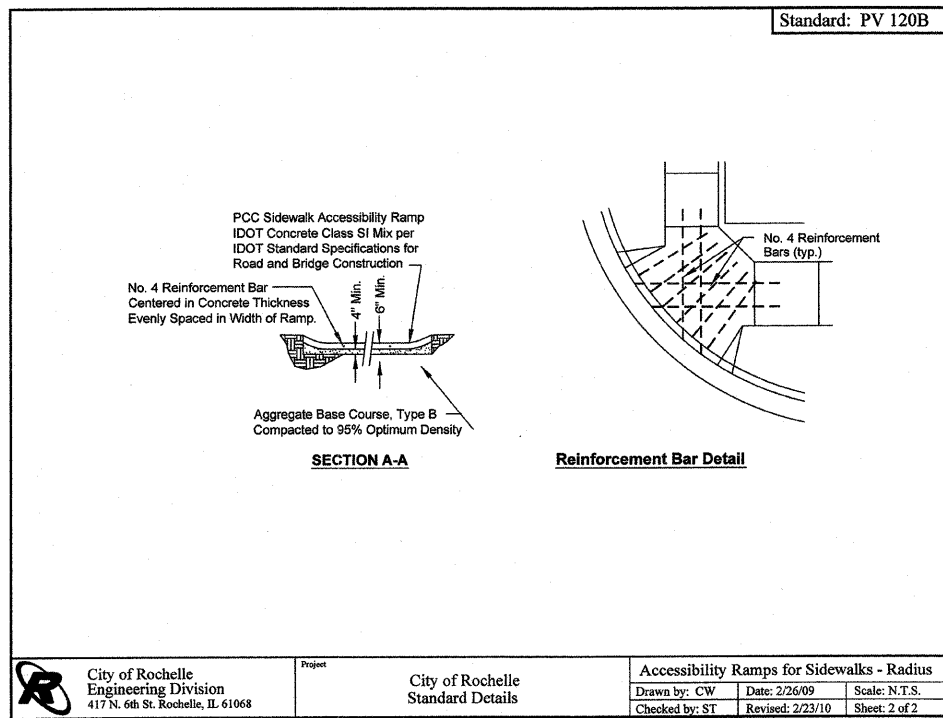


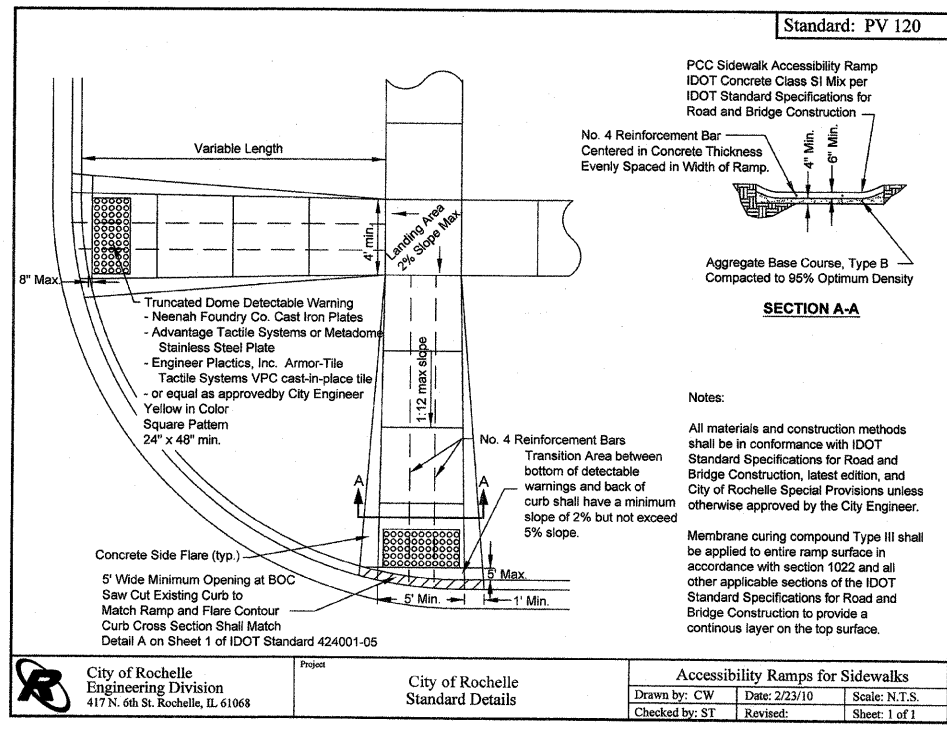
City of Rochelle Engineering Division 417 N. 6th St. Rochelle, IL 61068	Project	City of Rochelle	Accessibility Ramps for Sidewalks - Radius		
	Standard Details		Drawn by: CW	Date: 2/26/09	Scale: N.T.S.
			Checked by: ST	Revised: 2/23/10	Sheet: 1 of 2



City of Rochelle Engineering Division 417 N. 6th St. Rochelle, IL 61068	Project	City of Rochelle	Driveway & Alley Apron		
	Standard Details		Drawn by: CW	Date: 1/30/09	Scale: N.T.S.
			Checked by: ST	Revised: 10/26/09	Sheet: 1 of 1



City of Rochelle Engineering Division 417 N. 6th St. Rochelle, IL 61068	Project	City of Rochelle	Accessibility Ramps for Sidewalks - Radius		
	Standard Details		Drawn by: CW	Date: 2/26/09	Scale: N.T.S.
			Checked by: ST	Revised: 2/23/10	Sheet: 2 of 2



City of Rochelle Engineering Division 417 N. 6th St. Rochelle, IL 61068	Project	City of Rochelle	Accessibility Ramps for Sidewalks		
	Standard Details		Drawn by: CW	Date: 2/23/10	Scale: N.T.S.
			Checked by: ST	Revised:	Sheet: 1 of 1

REVISIONS			
REV	DESCRIPTION	DATE	APPROVED