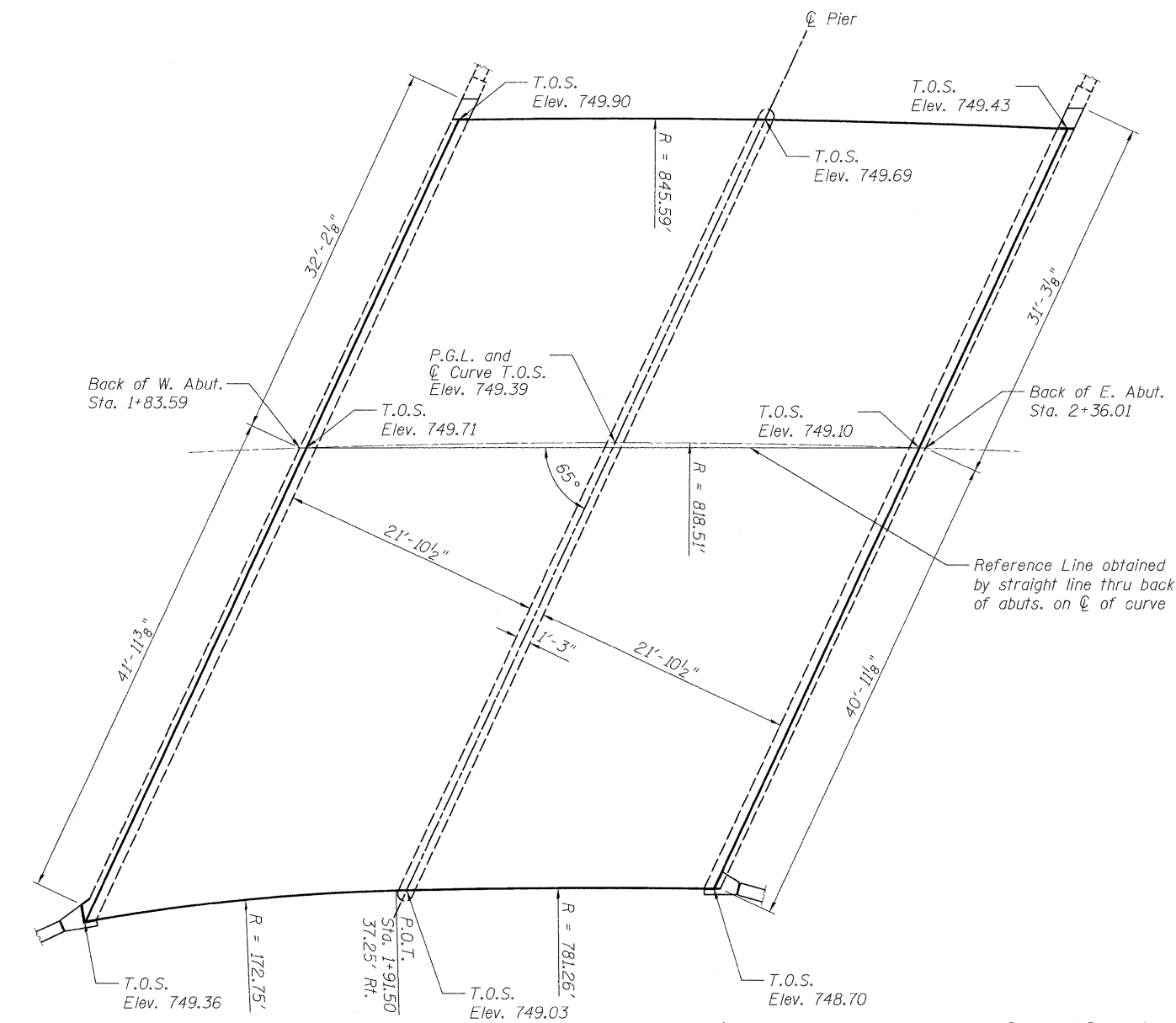
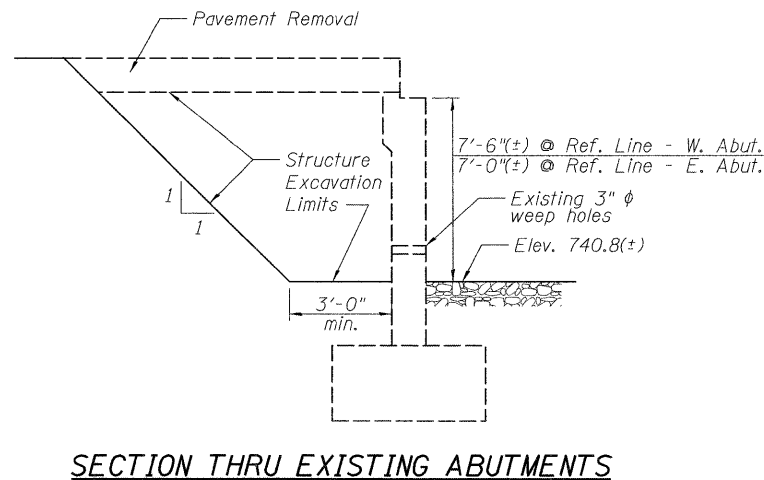


01/28/2010  
 I:\09\Jobs\091001\2\CADD\Struct\Sheet\5-008-RE.Mxd

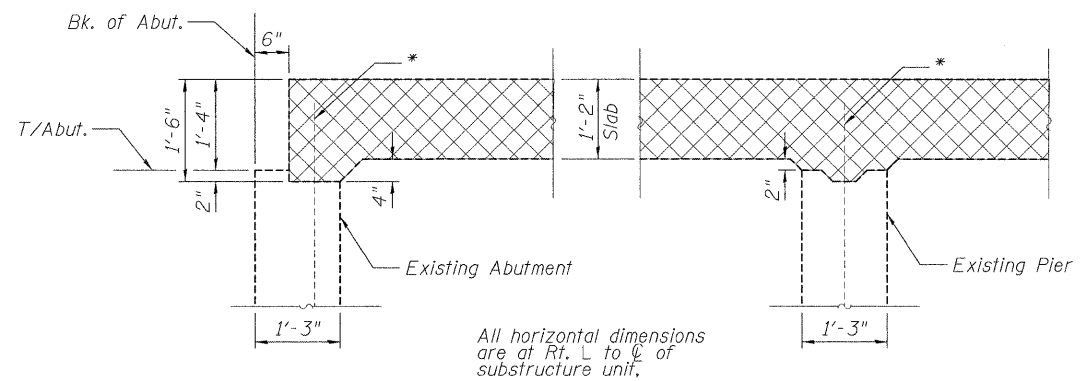
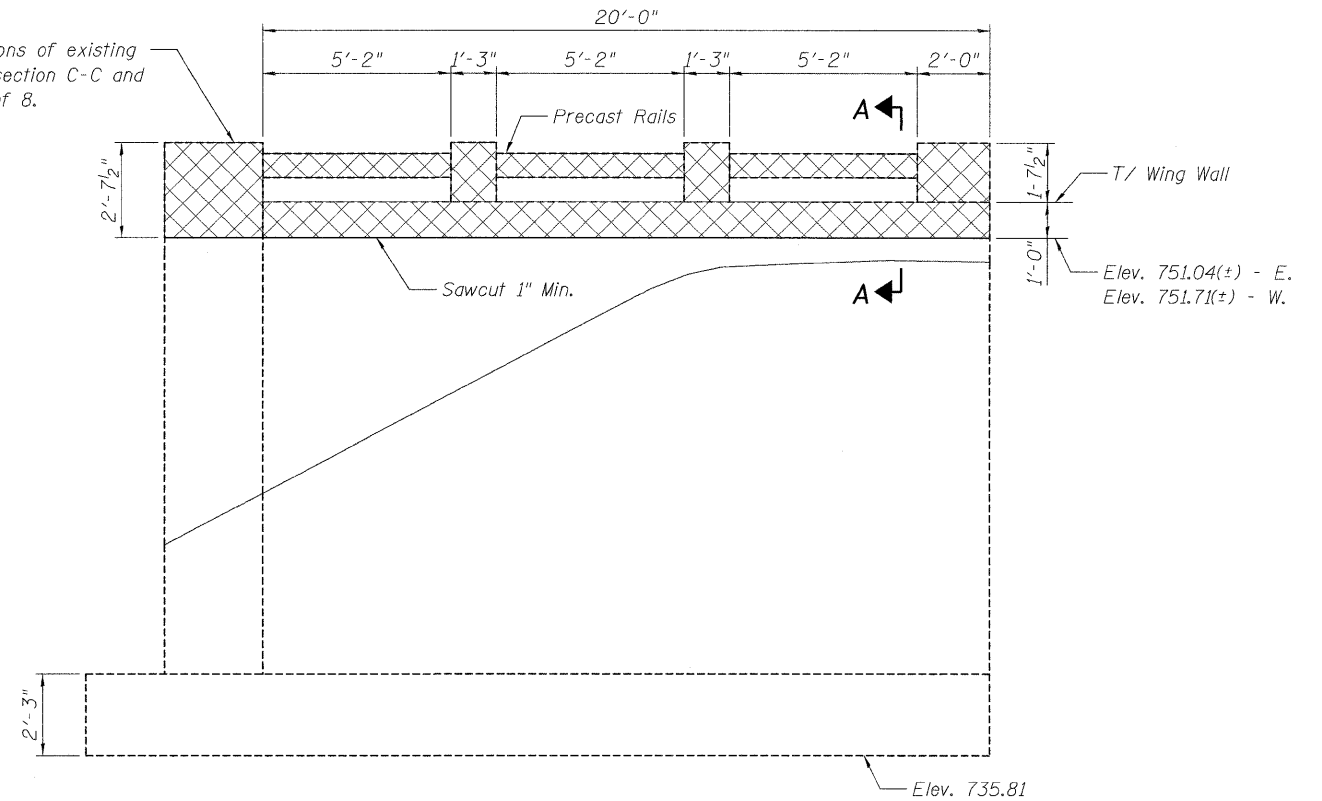
LAYOUT	SKK	10/21/09
DRAWN	JDM	11/20/09
REVIEWED	SKK	11/20/09



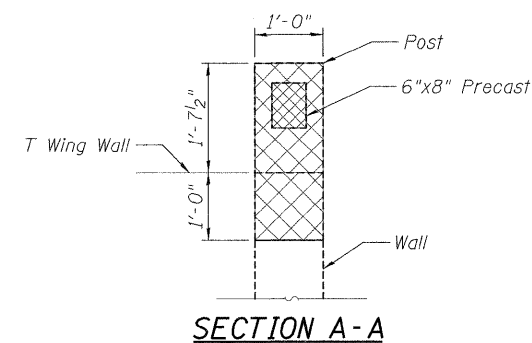
Note:  
Backfill shall be placed behind the abutment after the superstructure has been poured and falsework removed. See Article 502.10 of the Standard Specifications.



For cross sections of existing end posts see section C-C and D-D on Sht 7 of 8.



\* Existing reinforcement shall be cleaned and incorporated into the new construction.  
Cost included with Removal of Existing Superstructure.



**GEOMETRIC LAYOUT AND REMOVAL PLAN**  
 MORSAY DRIVE BRIDGE  
 OVER NORTH BRANCH OF KEITH CREEK  
 FAU 5068  
 SEC. 09-00565-00-BR  
 WINNEBAGO COUNTY, ILLINOIS  
 STATION 2+10  
 STRUCTURE NO. 101-6061

09L0012	01/28/10	Corporate License Number 184-001-084	© Copyright Hanson Professional Services Inc. 2009	09L0012	09L0012	09L0012	09L0012	09L0012	09L0012
SHEET NO. 2		8 SHEETS		FAU	SECTION	COUNTY	TOTAL SHEETS	SHEET NO.	
5068		09-00565-00-BR		WINNEBAGO	14	8	CONTRACT NO. 85507		
FED. ROAD DIST. NO. 2   ILLINOIS FED. AID PROJECT									