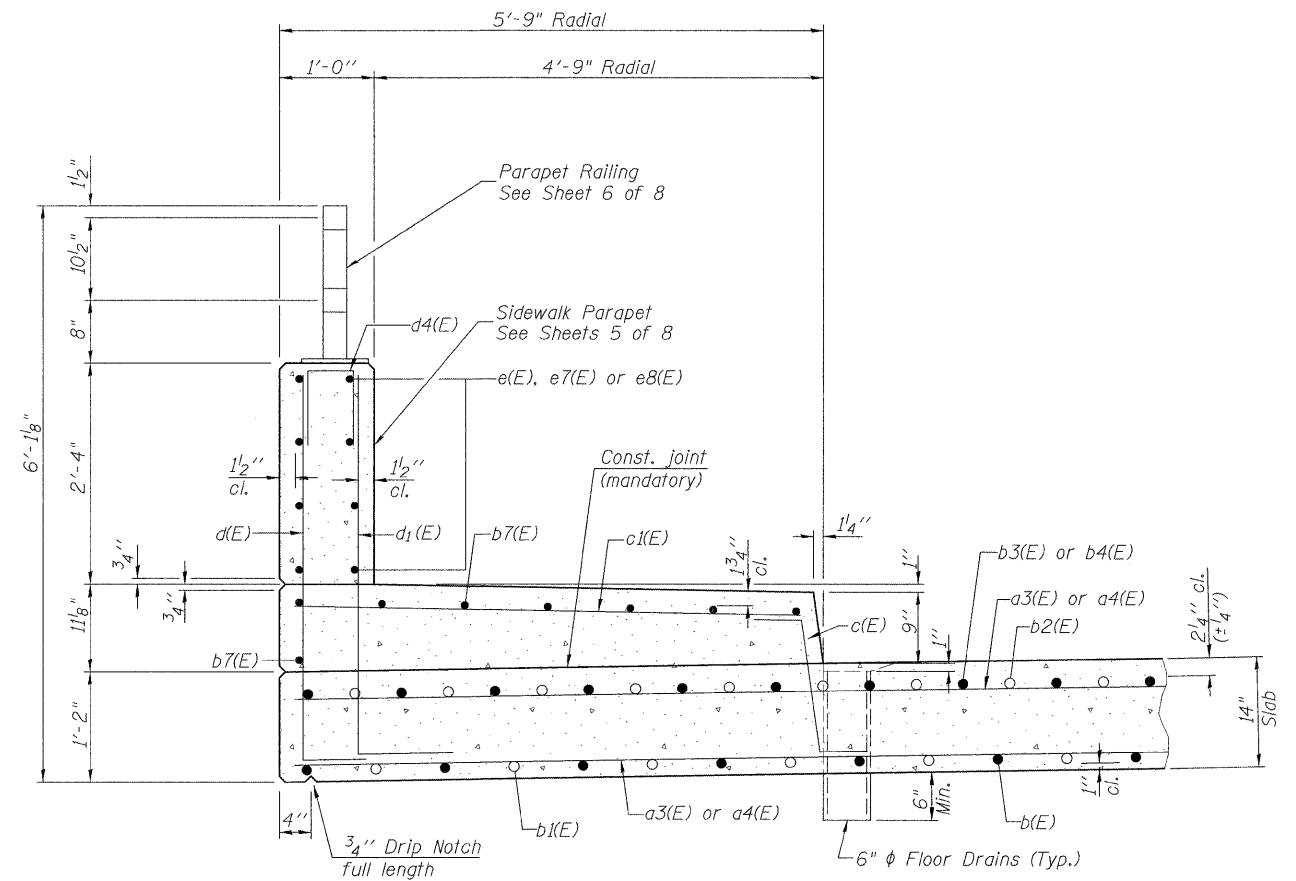
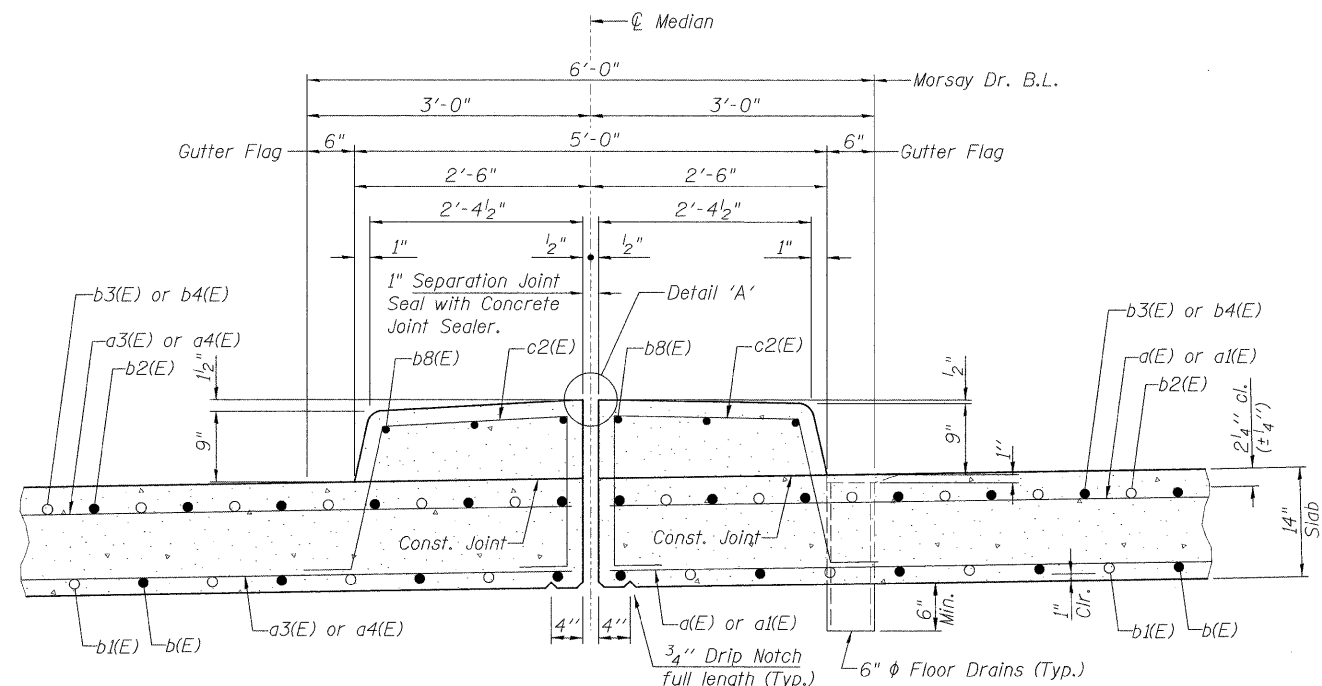


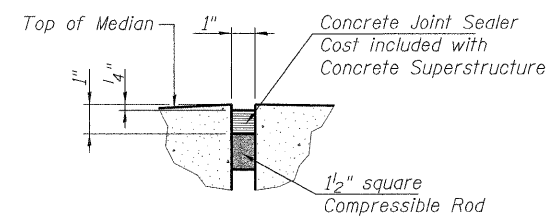
**SECTION THRU PARAPET**  
(Looking East)



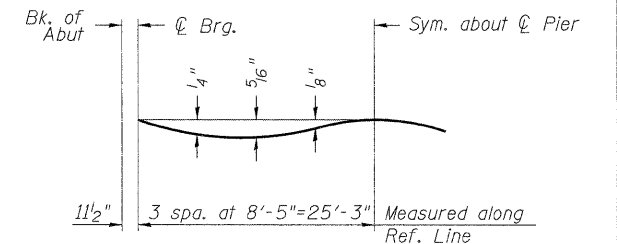
**SECTION THRU SIDEWALK**  
(Looking West)



**SECTION THRU SUPERIMPOSED MEDIAN WITH SEPARATION JOINT**  
(Looking West)



**DETAIL A**



**DEAD LOAD DEFLECTION DIAGRAM**  
(Includes weight of concrete only.)

For Floor Drain details see Sht. 5 of 8.

**SUPERSTRUCTURE SECTIONS**

**MORSAY DRIVE BRIDGE  
OVER NORTH BRANCH OF KEITH CREEK  
FAU 5068  
SEC. 09-00565-00-BR  
WINNEBAGO COUNTY, ILLINOIS  
STATION 2+10  
STRUCTURE NO. 101-6061**

0A28-2010  
 I:\05\0509\01\2\CAD\Struct\Sheet\Sheet 5-010-SUPDET.dgn  
 LAYOUT: SKM 10/21/09  
 DRAWN: JDM 11/20/09  
 REVIEWED: SKM 11/20/09

09L0012	01/28/10	Corporate License Number 184-001-084 © Copyright Hanson Professional Services Inc. 2009 <b>HANSON</b>	SHEET NO. 4 8 SHEETS	FAU 5068	SECTION 09-00565-00-BR	COUNTY WINNEBAGO	TOTAL SHEETS 14	SHEET NO. 10	CONTRACT NO. 85507
---------	----------	---	-------------------------	----------	------------------------	------------------	-----------------	--------------	--------------------

FED. ROAD DIST. NO. 2 ILLINOIS FED. AID PROJECT