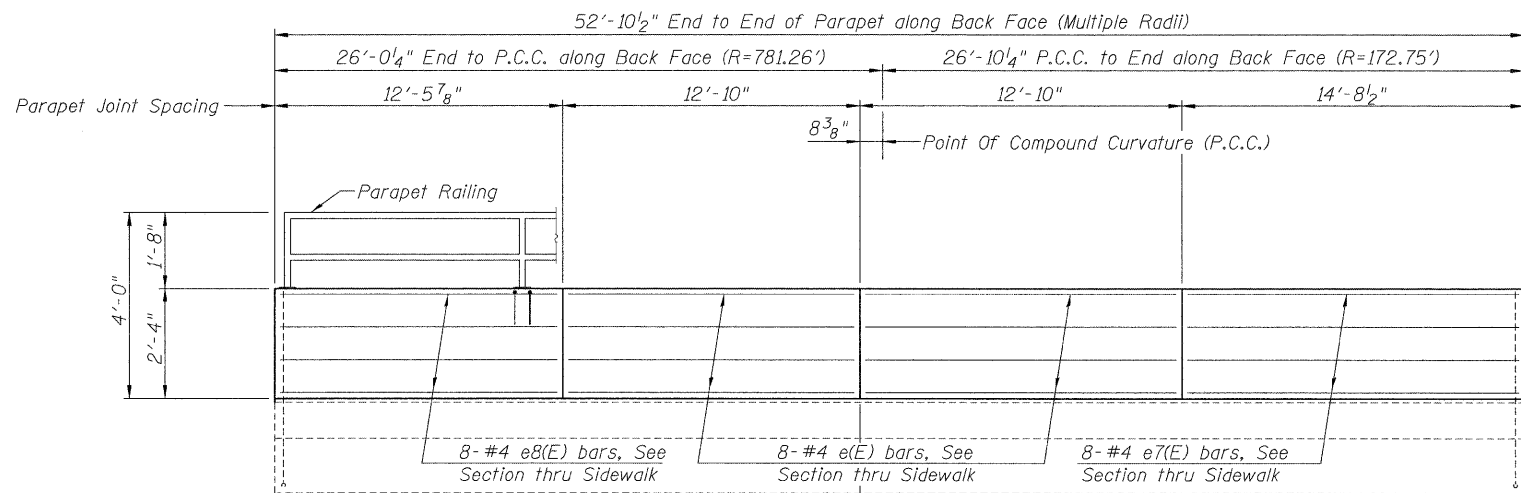


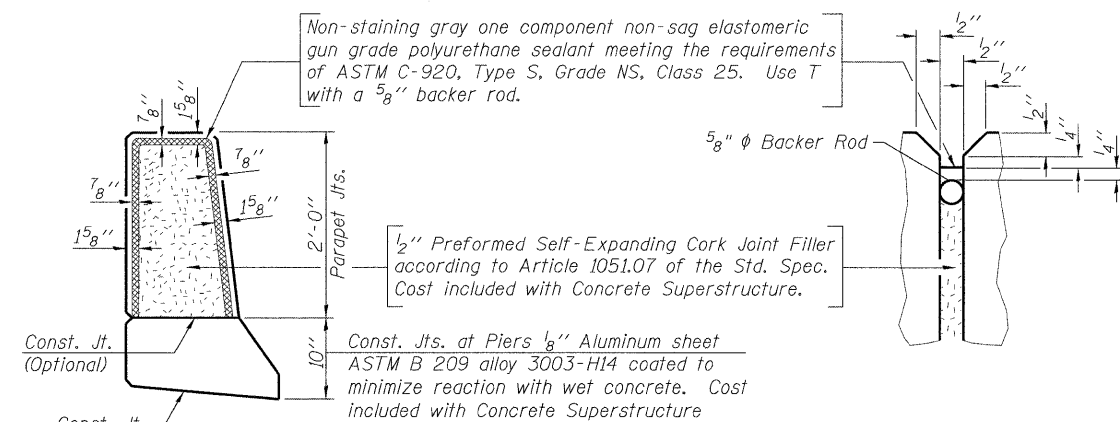
INSIDE ELEVATION OF NORTH PARAPET

Note: Contractor may construct parapet in straight segments with lengths as shown.

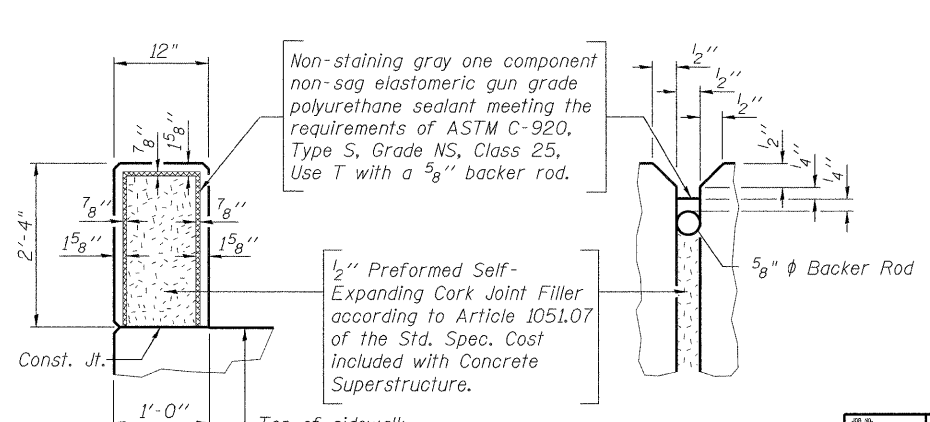


INSIDE ELEVATION OF SOUTH PARAPET

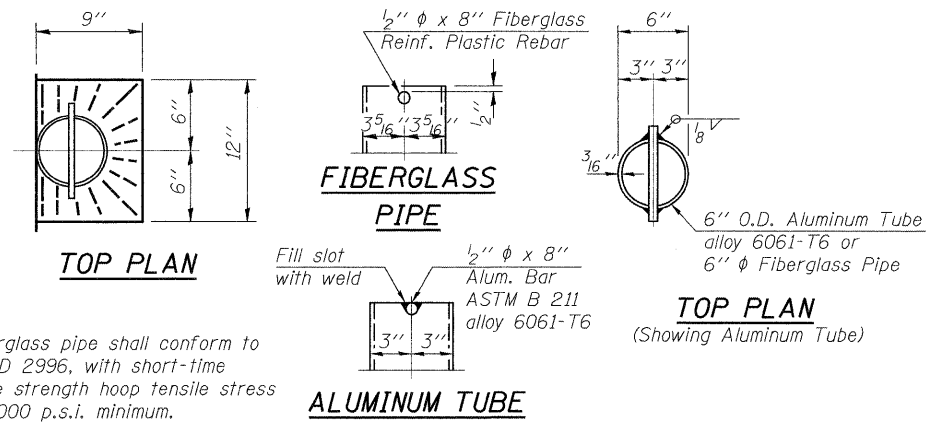
All horizontal dimensions are taken along the exterior face of parapet.



PARAPET JOINT DETAILS (NORTH PARAPET)



PARAPET JOINT DETAILS (SOUTH PARAPET)

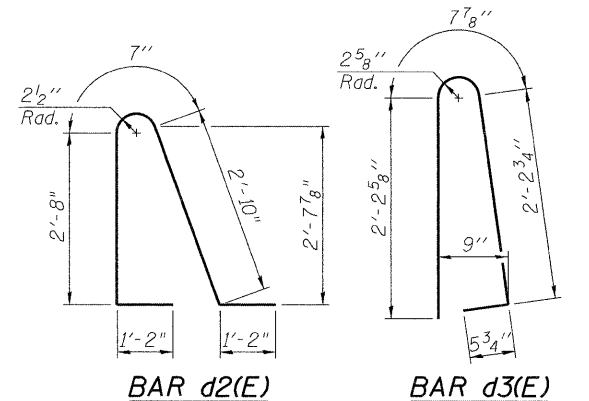
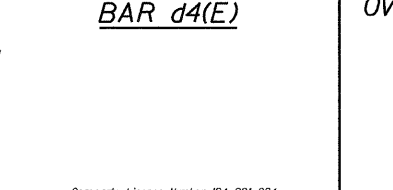
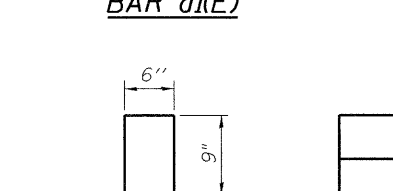
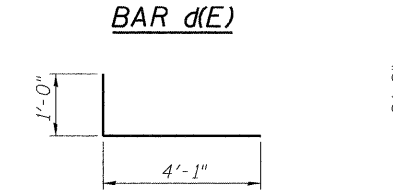
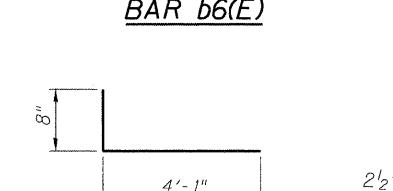
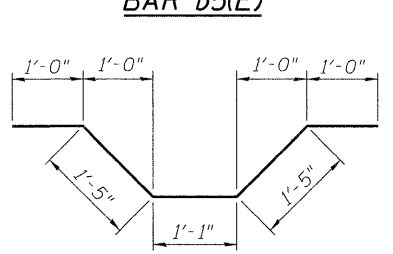
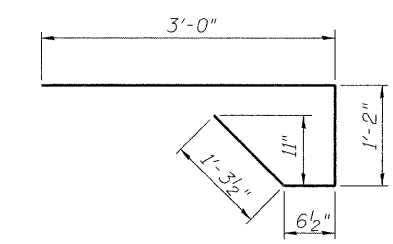
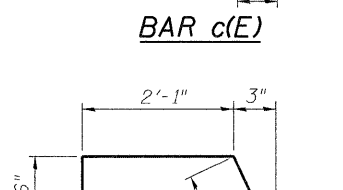
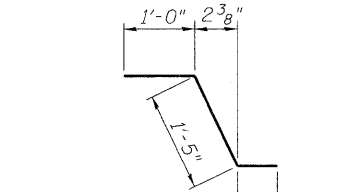
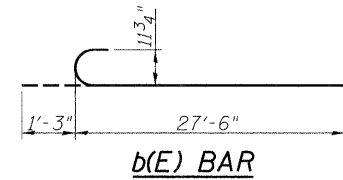


6-INCH DIAMETER FLOOR DRAIN

Notes:
Fiberglass pipe shall conform to ASTM D 2996, with short-time rupture strength hoop tensile stress of 30,000 p.s.i. minimum.

SUPERSTRUCTURE BILL OF MATERIAL

Bar	No.	Size	Length	Shape	
a(E)	68	#5	29'-8"	—	
a1(E)	18	#5	31'-0"	—	
a2(E)	NOT USED				
a3(E)	63	#5	33'-11"	—	
a4(E)	25	#5	36'-3"	—	
a5(E)	20	#5	3'-4"	—	
a6(E)	12	#5	37'-8"	—	
b(E)	89	#9	28'-9"	U	
b1(E)	84	#9	22'-3"	U	
b2(E)	64	#9	12'-0"	—	
b3(E)	66	#9	24'-0"	—	
b4(E)	132	#5	16'-0"	—	
b5(E)	132	#5	6'-0"	—	
b6(E)	66	#5	5'-11"	—	
b7(E)	16	#5	27'-3"	—	
b8(E)	12	#5	26'-6"	—	
c(E)	53	#5	2'-11"	—	
c1(E)	55	#5	5'-4"	—	
c2(E)	108	#5	6'-1"	—	
d(E)	54	#4	4'-9"	—	
d1(E)	54	#6	5'-1"	—	
d2(E)	57	#5	8'-5"	—	
d3(E)	57	#5	5'-7"	—	
d4(E)	40	#4	2'-0"	—	
e(E)	30	#4	12'-6"	—	
e1(E)	7	#4	11'-11"	—	
e2(E)	7	#4	13'-0"	—	
e3(E)	1	#4	24'-8"	—	
e4(E)	1	#4	25'-9"	—	
e5(E)	1	#8	24'-8"	—	
e6(E)	1	#8	25'-9"	—	
e7(E)	8	#4	14'-5"	—	
e8(E)	8	#4	12'-2"	—	
Reinforcement Bars, Epoxy Coated Concrete Superstructure				Pound	36,970
				Cu. Yds.	170.5



For Parapet Railing Details see Sht. 6 of 8

PARAPET AND MISC DETAILS

**MORSAY DRIVE BRIDGE
OVER NORTH BRANCH OF KEITH CREEK
FAU 5068
SEC. 09-00565-00-BR
WINNEBAGO COUNTY, ILLINOIS
STATION 2+10
STRUCTURE NO. 101-6061**

01/28/10
 SHK 10/21/09
 JDM 11/20/09
 SHK 11/20/09
 LAYOUT
 DRAWN
 REVIEWED

Corporate License Number JB4-001-084
 © Copyright Hanson Professional Services Inc. 2009
HANSON
 SHEET NO. 5
 8 SHEETS
 FAU 5068
 SECTION 09-00565-00-BR
 COUNTY WINNEBAGO
 TOTAL SHEETS 14
 SHEET NO. 11
 CONTRACT NO. 85507
 FED. ROAD DIST. NO. 2 ILLINOIS FED. AID PROJECT