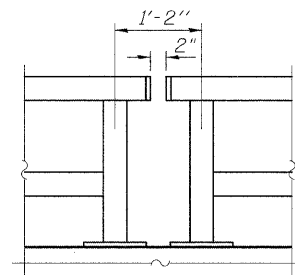
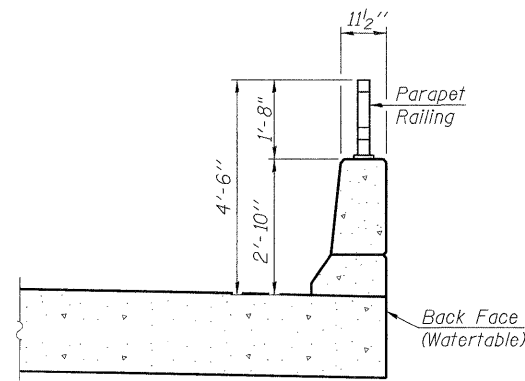


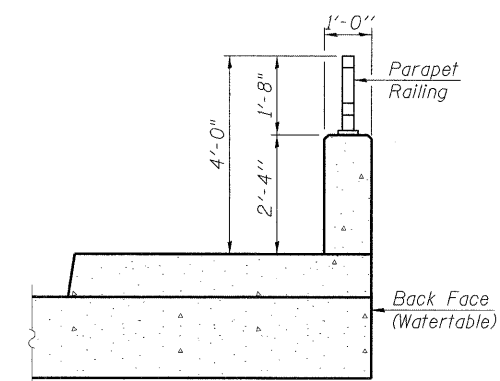
**PARAPET RAILING  
ELEVATION**



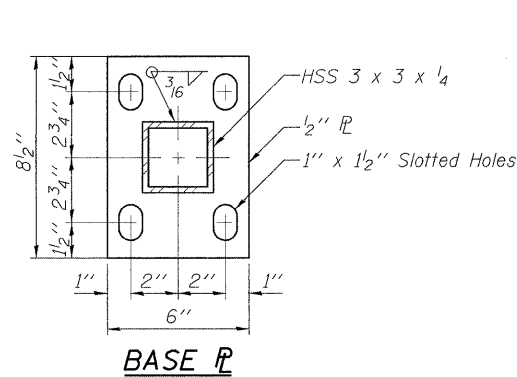
**PARAPET RAILING  
ELEVATION AT JOINT**



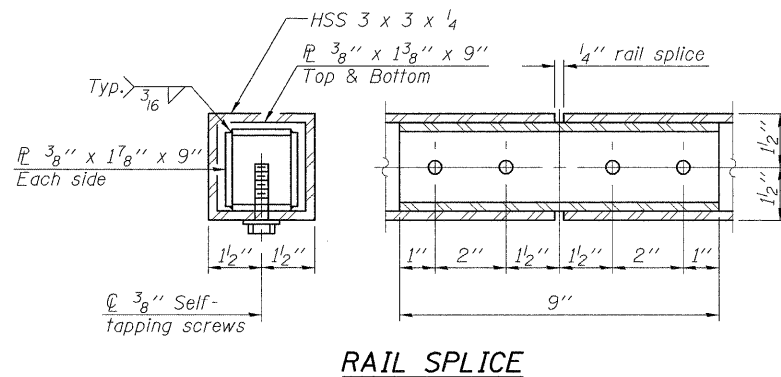
**SECTION THRU N. PARAPET**



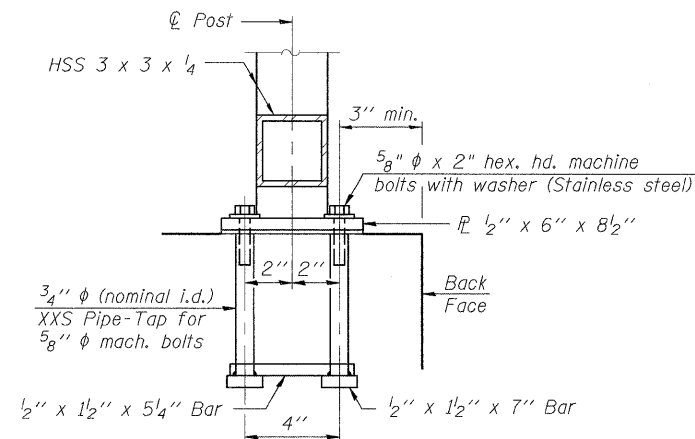
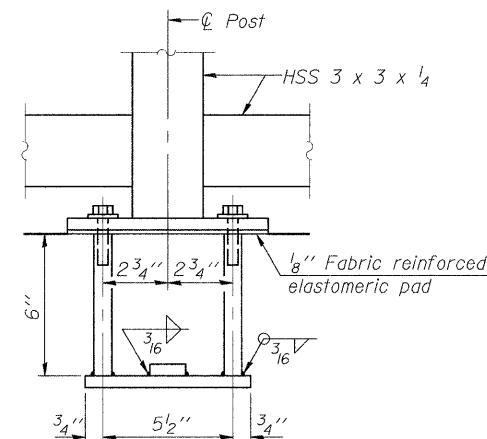
**SECTION THRU SIDEWALK**



**BASE PLATE**



**RAIL SPLICE**

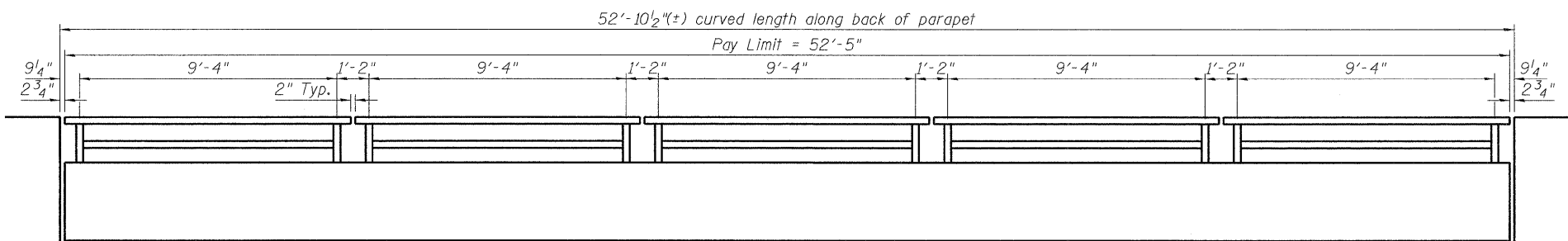


**ANCHOR BOLT DETAILS**

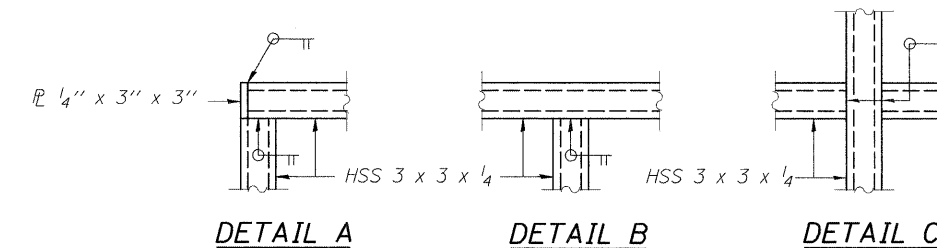
In lieu of the cast-in-place anchor device shown, the Contractor has the option of drilling and setting 5/8"  $\phi$  anchor rods according to Article 509.06 of the Standard Specifications. Embedment shall be according to the manufacturer's specifications.

**BILL OF MATERIAL**

Item	Unit	Quantity
Parapet Railing	Foot	102.2



**INSIDE ELEVATION OF SOUTH PARAPET RAILING**

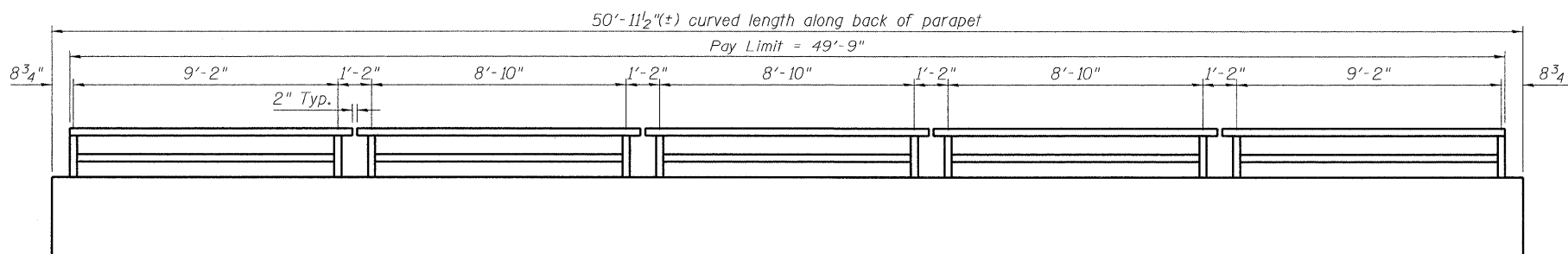


**DETAIL A**

**DETAIL B**

**DETAIL C**

- NOTES:
- All steel rail elements shall be galvanized according to Article 509.05 of the Standard Specifications.
  - For Wing Wall rail post spacing see Sht. 7 of 8.



**INSIDE ELEVATION OF NORTH PARAPET RAILING**

**PARAPET RAILING DETAILS**  
**MORSAY DRIVE BRIDGE**  
**OVER NORTH BRANCH OF KEITH CREEK**  
**FAU 5068**  
**SEC. 09-00565-00-BR**  
**WINNEBAGO COUNTY, ILLINOIS**  
**STATION 2+10**  
**STRUCTURE NO. 101-6061**

09L0012	Corporate License Number: IS4-001-084	Copyright Hanson Professional Services Inc. 2009	SHEET NO. 6	FAU	SECTION	COUNTY	TOTAL SHEETS	SHEET NO.
01/28/10			8 SHEETS	5068	09-00565-00-BR	WINNEBAGO	14	12
			FED. ROAD DIST. NO. 2			ILLINOIS FED. AID PROJECT		

01/28/10  
 LAYOUT: SKM  
 DRAWN: JDM  
 REVIEWED: SKM  
 I:\09\00565\09L0012\CADD\Struct\Sheet\012-RAIL.dgn