

GENERAL NOTES

1. REMOVAL AND DISPOSAL OF UNSUITABLE MATERIAL, AND POROUS GRANULAR EMBANKMENT SUBGRADE HAS BEEN ADDED FOR USE IF UNSUITABLE MATERIAL IS ENCOUNTERED IN THE FIELD, AS DETERMINED BY THE ENGINEER. IF UNSUITABLE AND/OR UNSTABLE MATERIALS IS NOT ENCOUNTERED, THEN THE QUANTITY SHALL BE DEDUCTED AND NO COMPENSATION WILL BE DUE THE CONTRACTOR.
2. FORTY EIGHT HOURS BEFORE STARTING EXCAVATION THE CONTRACTOR WILL CALL J.U.L.I.E. (1-800-892-0123) TO HAVE THE LOCATION OF EXISTING UTILITIES STAKED.
3. THE CONTRACTOR SHALL CONTACT THE CITY OF ROCKFORD AT LEAST 72 HOURS IN ADVANCE OF BEGINNING ANY WORK ON CENTRAL AVENUE.
4. THE CONTRACTOR WILL NOT BE ALLOWED TO SET UP A YARD OR FIELD OFFICE ON CITY PROPERTY WITHOUT WRITTEN PERMISSION FROM THE CITY OF ROCKFORD.
5. PRIOR TO COMMENCEMENT OF CONSTRUCTION, THE CONTRACTOR SHALL VERIFY ALL DIMENSIONS AND CONDITIONS AFFECTING THEIR WORK WITH THE ACTUAL CONDITIONS AT THE JOB SITE. IN ADDITION, THE CONTRACTOR MUST VERIFY THE ENGINEER'S LINE AND GRADE STAKES. IF THERE ARE ANY DISCREPANCIES FROM WHAT IS SHOWN ON THE CONSTRUCTION PLANS, HE MUST IMMEDIATELY REPORT SAME TO THE ENGINEER BEFORE DOING ANY WORK, OTHERWISE THE CONTRACTOR ASSUMES FULL RESPONSIBILITY. IN THE EVENT OF DISAGREEMENT BETWEEN THE CONSTRUCTION PLANS, STANDARD SPECIFICATIONS AND/OR SPECIAL DETAILS, THE CONTRACTOR SHALL SECURE WRITTEN INSTRUCTIONS FROM THE ENGINEER PRIOR TO PROCEEDING WITH ANY PART OF THE WORK AFFECTED BY OMISSIONS OR DISCREPANCIES. FAILING TO SECURE SUCH INSTRUCTIONS, THE CONTRACTOR WILL BE CONSIDERED TO HAVE PROCEEDED AT HIS OWN RISK AND EXPENSE. IN THE EVENT OF ANY DOUBT OR QUESTION ARISING WITH RESPECT TO THE TRUE MEANING OF THE CONSTRUCTION PLANS OR SPECIFICATIONS, THE DECISION OF THE ENGINEER SHALL BE FINAL AND CONCLUSIVE.
6. THE LENGTH OF "GUARDRAIL REMOVAL" INCLUDES THE LENGTH OF THE TRAFFIC BARRIER TERMINALS.
7. THE WORK UNDER THIS CONTRACT SHALL CONFORM TO ALL REGULATIONS GIVEN IN THE ARMY CORPS OF ENGINEERS PERMIT ISSUED FOR THE PROJECT.
8. REMOVAL AND RELOCATION OF EXISTING SIGNS AND EXISTING TRAFFIC CONTROL SIGNS WILL NOT BE PAID SEPARATELY BUT WILL BE INCLUDED IN THE UNIT COST OF THE PAY ITEMS PERSUANT TO ARTICLE 107 OF THE "STANDARD SPECIFICATIONS"
9. THE CONTRACTOR SHALL PROVIDE ACCESS TO ALL ABUTTING PROPERTY AT ALL TIMES DURING THE CONSTRUCTION OF THIS PROJECT, EXCEPT FOR PERIODS OF SHORT DURATION AS DETERMINED BY THE ENGINEER.
10. THE ENGINEER WILL BE THE SOLE JUDGE CONCERNING CURING TIME FOR THE VARIOUS HMA LIFTS.
11. EXCEPT AS NOTED ON THE PLANS, PAVEMENT GRADES SHOWN ARE AT THE TOP OF PAVEMENT SURFACES.
12. OFFSET LOCATIONS GIVEN IN THE PLANS FOR STRUCTURES, EDGE OF PAVEMENT, ETC. ARE FROM THE ROADWAY CENTERLINE UNLESS NOTED OTHERWISE.
13. ALL ELEVATIONS REFERRING TO U.S.G.S. MEAN SEA LEVEL DATUM.
14. ADDITIONAL SHOULDER WIDENING INDICATED IN HIGHWAY STANDARD 630301-05 WILL NOT BE REQUIRED
15. THE EXISTING BRIDGE DESIGN PLANS ARE AVAILABLE AT THE CITY OF ROCKFORD.

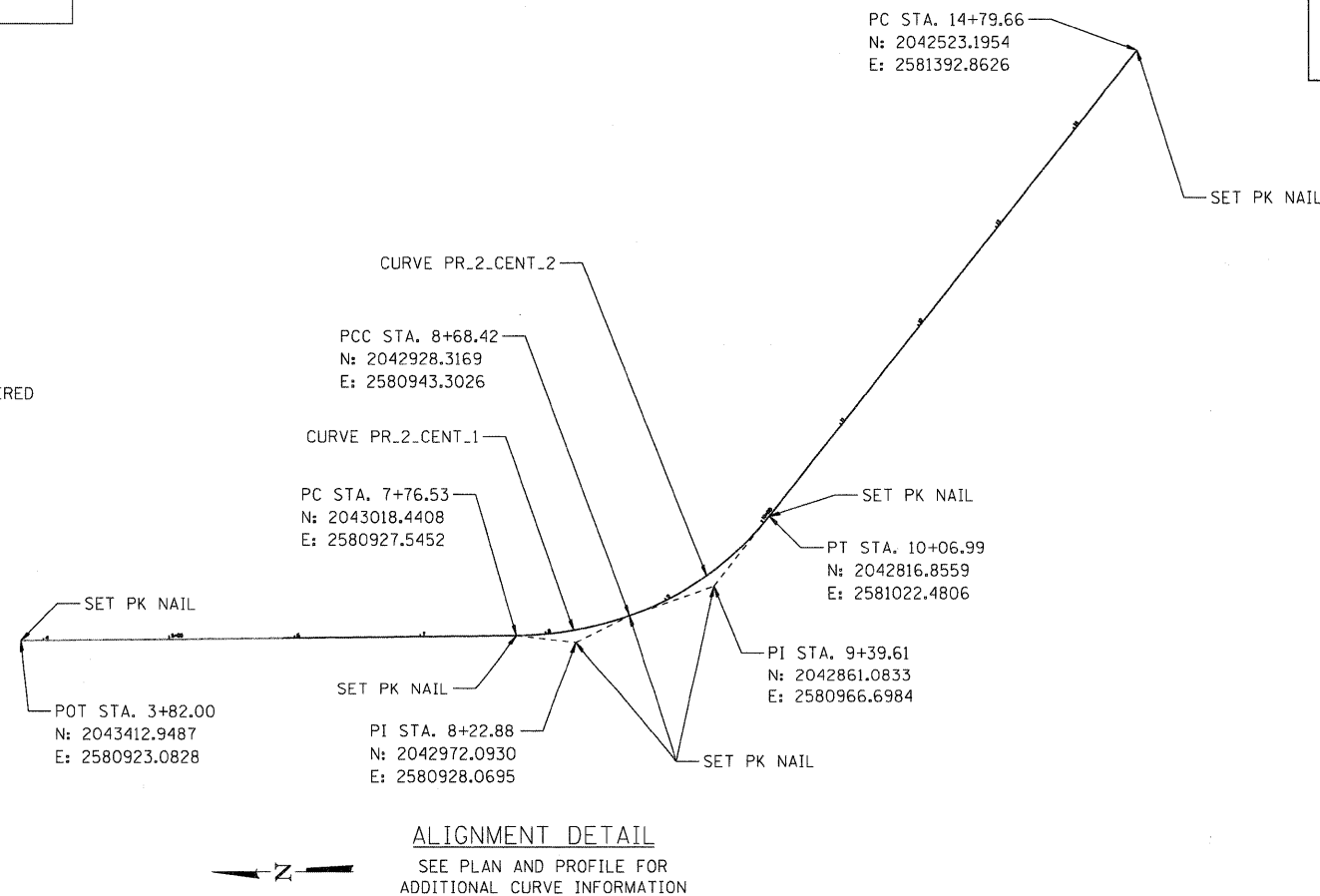
16. THE LOCATION OF EXISTING DRAINAGE STRUCTURES, STORM SEWERS, WATER MAINS, SANITARY SEWERS, AND ANY OTHER PUBLIC OR PRIVATE UTILITIES AS SHOWN ON THE PLANS IS APPROXIMATE AND THEIR EXACT LOCATION IS TO BE DETERMINED IN THE FIELD BY THE CONTRACTOR. THIS WORK SHALL BE CONSIDERED AS INCLUDED IN THE UNIT BID PRICES OF THE CONTRACT, AND NO ADDITIONAL COMPENSATION WILL BE ALLOWED.
17. THE CONTRACTOR SHALL BE RESPONSIBLE FOR THE PROTECTION OF ALL UNDERGROUND AND SURFACE UTILITIES EVEN THOUGH THEY MIGHT NOT BE SHOWN ON THE PLANS. ANY UTILITY PROPERTY DAMAGED DURING CONSTRUCTION SHALL BE REPAIRED OR REPLACED TO THE SATISFACTION OF THE OWNER AT THE CONTRACTOR'S EXPENSE.
18. ANY LOOSE MATERIAL DEPOSITED IN THE FLOWLINES OF DRAINAGE STRUCTURES WHICH OBSTRUCT THE NATURAL FLOW OF WATER SHALL BE REMOVED AT THE CLOSE OF EACH WORKING DAY. PRIOR TO ACCEPTANCE OF THE IMPROVEMENT, ALL DRAINAGE STRUCTURES SHALL BE FREE OF DIRT AND DEBRIS. THIS WORK SHALL NOT BE PAID FOR SEPARATELY BUT SHALL BE CONSIDERED AS INCLUDED IN THE UNIT BID PRICES OF THE CONTRACT.
19. WHERE NEW WORK MEETS EXISTING FEATURES TO REMAIN, THE CONTRACTOR SHALL FIELD CHECK ALL DIMENSIONS AND ELEVATIONS PRIOR TO PROCEEDING WITH CONSTRUCTION AND NOTIFY THE ENGINEER IMMEDIATELY OF ANY DISCREPANCIES.
20. SEEDING WILL NOT BE PERMITTED AT ANY TIME WHEN THE GROUND IS FROZEN, WET, OR IN AN UNTILLABLE CONDITION. LOCATIONS TO BE SEEDED WILL BE DETERMINED BY THE ENGINEER.
21. SAW CUTTING WILL BE REQUIRED FOR ALL REMOVAL ITEMS LISTED IN SECTION 440 OF THE STANDARD SPECIFICATIONS, SHOWN IN THE PLANS, AND AS DIRECTED BY THE ENGINEER. THE COST OF SAW CUTTING WILL BE INCLUDED IN CONTRACT UNIT BID PRICES FOR THE ITEMS BEING REMOVED.
22. THE COST FOR FURNISHING AND INSTALLING REFLECTOR MARKERS IN ACCORDANCE WITH HIGHWAY STANDARDS 635006 AND 635011 IS INCLUDED IN THE COST OF TRAFFIC BARRIER TERMINALS, OF THE TYPE SPECIFIED.

SYMBOL LEGEND

	EXISTING	PROPOSED
SANITARY MANHOLE	⊙	⊙
STORM MANHOLE	⊙	⊙
STORM CATCH BASIN INLET	○	●
FLARED END SECTION	▷	▷
VALVE VAULT	⊕	⊕
FIRE HYDRANT	▽	▽
LIGHT POLE	✱	✱
STREET SIGN	+	+
REGULATORY SIGN	+	+
UTILITY POLE	○	○
UTILITY BOX	⊙	⊙
MAILBOX	⊙	⊙
WELL	⊙	⊙
SANITARY SEWER	—	—
STORM SEWER	—	—
CULVERT	—	—
WATER MAIN	—	—
WATER MAIN ENCASEMENT	—	—
STORM UNDERDRAIN	—	—
ELECTRIC LINE	—	—
TELEPHONE LINE	—	—
GAS LINE	—	—
CABLE TV LINE	—	—
TREELINE	⊙	⊙
TREE	⊙	⊙
FENCE	—	—
EROSION CONTROL FENCE	—	—
DITCH CHECK	—	—
DRAINAGE ARROW	→	→
100 YEAR OVERFLOW	—	—

UTILITY CONTACTS

CITY OF ROCKFORD WATER DIVISION	GREG CASSARO	(815) 987-3084
ROCK RIVER WATER RECLAMATION DISTRICT	MIKE OLSON	(815) 387-7663
COMCAST	MICHAEL OWENS	(815) 509-7876
COMED	MIKE LENOX	(815) 490-2869
AT&T	STEVEN JONES	(815) 394-7270
NICOR	CHRIS WINTERS	(815) 455-0271



ALIGNMENT DETAIL
SEE PLAN AND PROFILE FOR ADDITIONAL CURVE INFORMATION

STANDARD ABBREVIATIONS

- B-B - BACK TO BACK OF CURB
- B.C. - BACK OF CURB
- B.O.C. - BACK OF CURB
- B.S.L. - BUILDING SETBACK LINE
- C.B. - STORM CATCH BASIN
- C.E. - COMMONWEALTH EDISON CO.
- D.E. - DRAINAGE EASEMENT
- E-E - EDGE TO EDGE OF PAVEMENT
- E.O.P. - EDGE OF PAVEMENT
- E.O.S. - EDGE OF SHOULDER
- E.S. - EDGE OF SHOULDER
- F.E.S. - FLARED END SECTION
- I.B.T. - ILLINOIS BELL TELEPHONE CO.
- L.E. - LANDSCAPE EASEMENT
- M.H. - MANHOLE (TYPE SPECIFIED ON PLANS)
- R.O.W. - RIGHT OF WAY
- T.B.F. - TRENCH BACKFILL
- T.C. - TOP OF CURB
- T.C.E. - TEMPORARY CONSTRUCTION EASEMENT
- T.O.B. - TOP OF BERM
- T.O.C. - TOP OF CURB
- U.E. - UTILITY EASEMENT

COMPANY NAME: SEC GROUP, INC.
 PROJECT CONTACT: Robert G. Davies
 CLIENT: City of Rockford
 DATE PLOTTED: 1/26/2010 10:45 PM
 FILE NAME: 090026-Nim01.dgn
 PLOT DRIVER: pdf.plt
 PEN TABLE: standard-trans.tbl

SEC Group, Inc.
 An HDR Group Company
 420 N. First Street
 Rockford, IL 61103-1130
 P: 815.395.1779 F: 815.395.1701
 www.secgroupinc.com

USER NAME = rhood	DESIGNED - KMA	REVISED -
FILE NAME = 090026-Nim01.dgn	DRAWN - WJH	REVISED -
PLOT SCALE = NTS	CHECKED - TH	REVISED -
PLOT DATE = 1/26/2010	DATE - 1/26/10	REVISED -

CITY OF ROCKFORD

CENTRAL AVENUE OVER THE SOUTH BRANCH OF KENT CREEK
GENERAL NOTES AND SPECIFICATIONS

SCALE: NTS SHEET NO. 1 OF SHEETS STA. TO STA.

F.A.U. RTE.	SECTION	COUNTY	TOTAL SHEETS	SHEET NO.
5102	09-00557-00-BR	Winnebago	18	2

CONTRACT NO. 85508
 FED. ROAD DIST. NO. 2 ILLINOIS FED. AID PROJECT