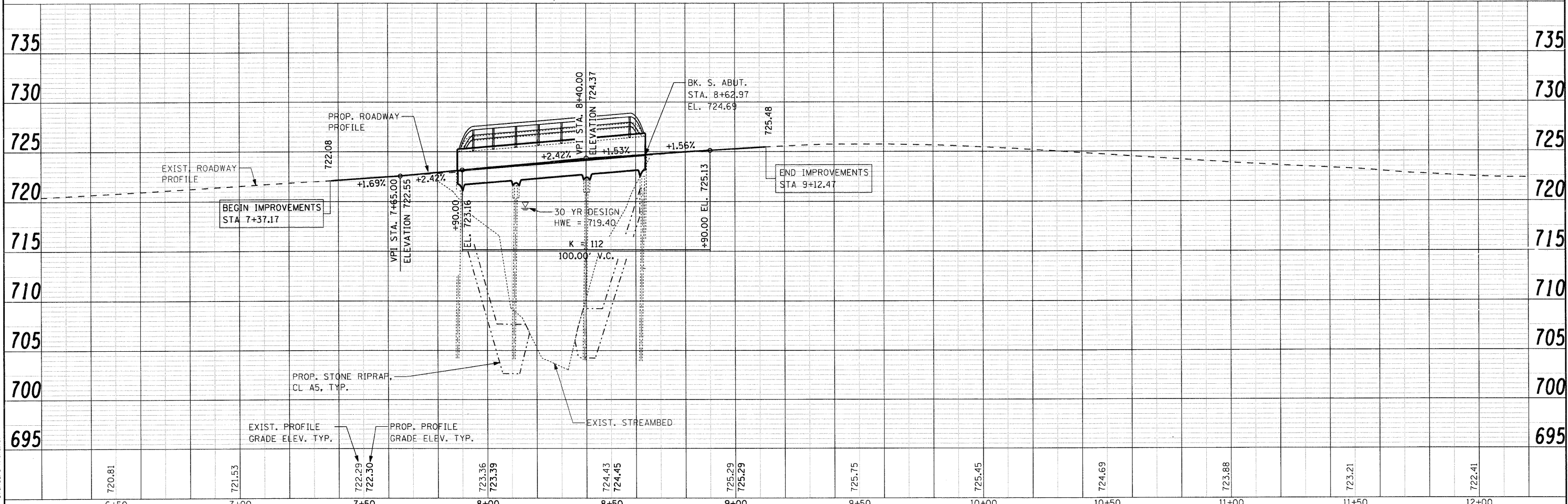
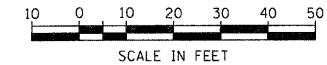
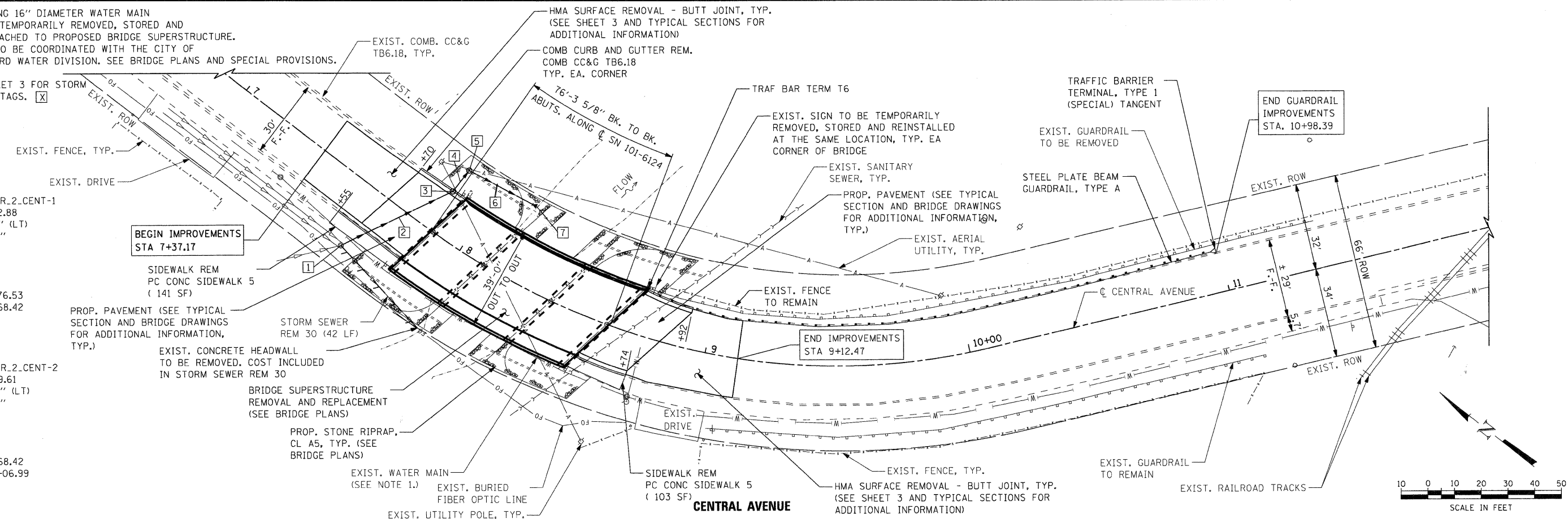


NOTE 1. EXISTING 16" DIAMETER WATER MAIN TO BE TEMPORARILY REMOVED, STORED AND RE-ATTACHED TO PROPOSED BRIDGE SUPERSTRUCTURE. WORK TO BE COORDINATED WITH THE CITY OF ROCKFORD WATER DIVISION. SEE BRIDGE PLANS AND SPECIAL PROVISIONS.

NOTE 2. SEE SHEET 3 FOR STORM SEWER TAGS. [X]

PROP. CURVE PR.2.CENT-1
 PI STA. = 8+22.88
 $\Delta = 18^\circ 32' 19''$ (LT)
 $D = 20^\circ 10' 28''$
 $R = 284.00'$
 $T = 46.35'$
 $L = 91.89'$
 $E = 3.76'$
 P.C. STA = 7+76.53
 P.T. STA = 8+68.42

PROP. CURVE PR.2.CENT-2
 PI STA. = 9+39.61
 $\Delta = 32^\circ 24' 14''$ (LT)
 $D = 23^\circ 23' 10''$
 $R = 245.00'$
 $T = 71.19'$
 $L = 138.56'$
 $E = 10.13'$
 P.C. STA = 8+68.42
 P.T. STA = 10+06.99



COMPANY NAME: SEC Group, Inc.
 PROJECT CONTACT: Robert C. Davies
 CLIENT: City of Rockford
 DATE PLOTTED: 1/26/2010 10:59 AM
 FILE NAME: 090026-pnp01-PDR.dgn
 PLOT DRIVER: pcf.plt
 PEN TABLE: standard-trans.tbl

SEC Group, Inc.
 An HR Group Company
 420 N. First Street
 Rockford, IL 61103-3130
 815.395.1773 | 815.365.1761
 www.secgroupinc.com
 *McHenry, IL *Rockford, IL *New Lenox, IL *Chicago, IL

USER NAME = whood	DESIGNED - KMA	REVISED -
FILE NAME = 090026-pnp01-PDR.dgn	DRAWN - WJH	REVISED -
PLOT SCALE = 1"=20'	CHECKED - TH	REVISED -
PLOT DATE = 1/26/2010	DATE - 1/26/10	REVISED -

CITY OF ROCKFORD

**CENTRAL AVENUE OVER THE SOUTH BRANCH OF KENT CREEK
 PROPOSED PLAN AND PROFILE**

SCALE: 1"=20' SHEET NO. 1 OF 1 SHEETS STA. 6+50 TO STA. 12+00

F.A.U. RTE.	SECTION	COUNTY	TOTAL SHEETS	SHEET NO.
5102	09-00557-00-BR	Winnebago	18	5
FED. ROAD DIST. NO. 2 [ILLINOIS] FED. AID PROJECT			CONTRACT NO. 85508	