

**SUPERSTRUCTURE  
BILL OF MATERIAL**

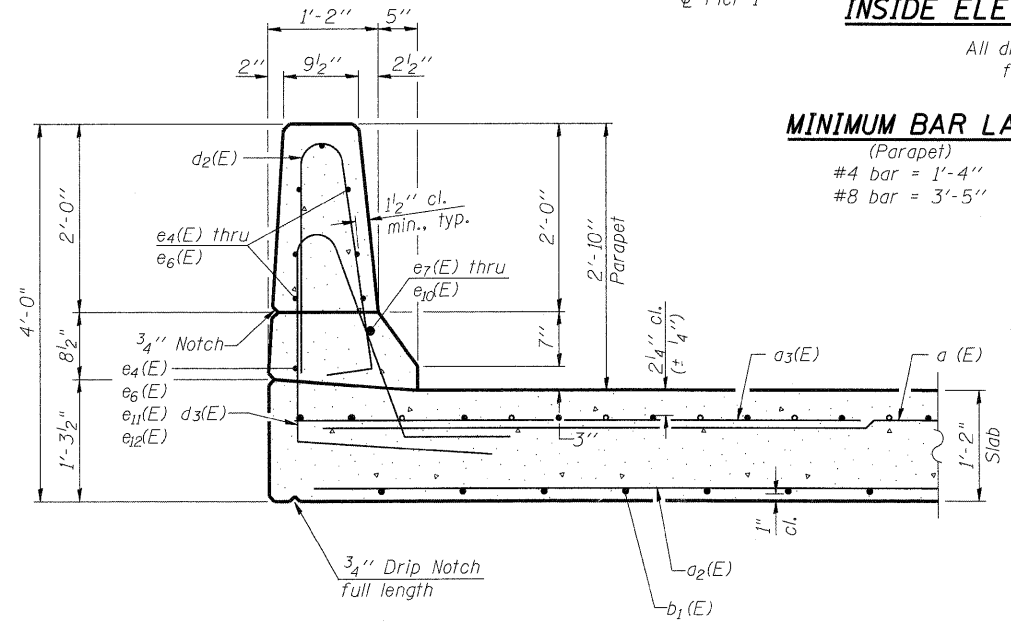
Bar	No.	Size	Length	Shape
a(E)	168	#7	24'-2"	—
a <sub>1</sub> (E)	84	#5	28'-0"	—
a <sub>2</sub> (E)	84	#5	18'-1"	—
a <sub>3</sub> (E)	84	#6	6'-0"	—
b(E)	82	#8	12'-0"	—
b <sub>1</sub> (E)	82	#8	23'-4"	—
b <sub>2</sub> (E)	82	#8	17'-1"	—
b <sub>3</sub> (E)	41	#8	14'-8"	—
b <sub>4</sub> (E)	41	#7	18'-2"	—
b <sub>5</sub> (E)	41	#7	31'-0"	—
b <sub>6</sub> (E)	82	#7	25'-2"	—
b <sub>7</sub> (E)	82	#7	18'-9"	—
b <sub>8</sub> (E)	21	#5	26'-0"	—
c(E)	75	#5	2'-5"	—
c <sub>1</sub> (E)	75	#5	5'-8"	—
d(E)	75	#4	4'-10"	L
d <sub>1</sub> (E)	75	#6	4'-0"	L
d <sub>2</sub> (E)	84	#5	5'-7"	I
d <sub>3</sub> (E)	84	#5	7'-10"	L
d <sub>4</sub> (E)	14	#4	2'-0"	I
e(E)	12	#4	19'-8"	—
e <sub>1</sub> (E)	6	#4	12'-1"	—
e <sub>2</sub> (E)	6	#4	7'-11"	—
e <sub>3</sub> (E)	6	#4	12'-9"	—
e <sub>4</sub> (E)	15	#4	11'-1"	—
e <sub>5</sub> (E)	14	#4	14'-0"	—
e <sub>6</sub> (E)	15	#4	11'-8"	—
e <sub>7</sub> (E)	1	#8	11'-1"	—
e <sub>8</sub> (E)	1	#8	25'-6"	—
e <sub>9</sub> (E)	1	#8	26'-1"	—
e <sub>10</sub> (E)	1	#8	11'-8"	—
e <sub>11</sub> (E)	1	#4	25'-6"	—
e <sub>12</sub> (E)	1	#4	26'-1"	—
f(E)	12	#7	23'-4"	—
u(E)	8	#5	6'-1"	—
u <sub>1</sub> (E)	8	#5	6'-7"	—
Reinforcement Bars, Epoxy Coated			Pound	42,350
Concrete Superstructure			Cu. Yds.	160.4

**INSIDE ELEVATION OF EAST PARAPET**

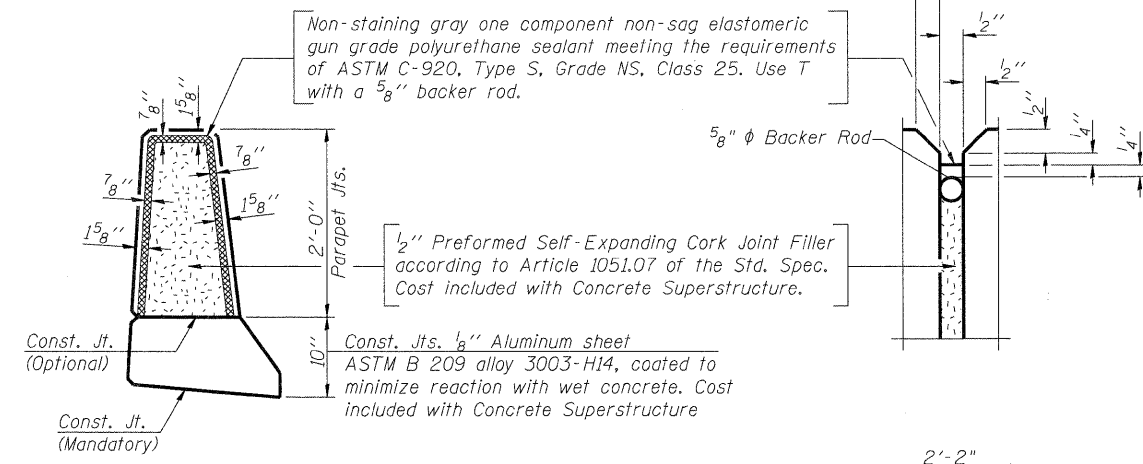
All dimensions measured along front face of parapet

**MINIMUM BAR LAP**

(Parapet)  
#4 bar = 1'-4"  
#8 bar = 3'-5"

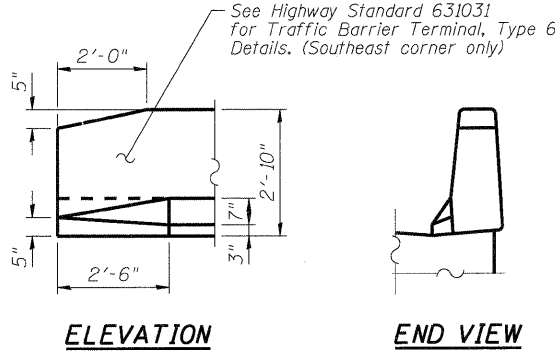
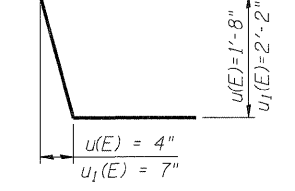


**SECTION THRU PARAPET**



**PARAPET JOINT DETAILS**

**BARS u(E), & u1(E)**

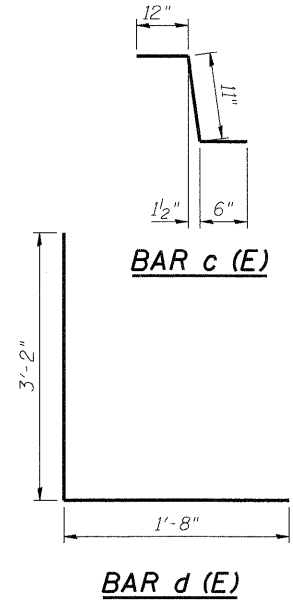


**ELEVATION**

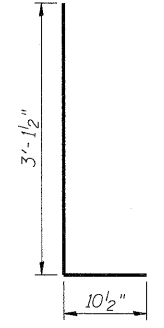
**END VIEW**

**END TREATMENT DETAIL**

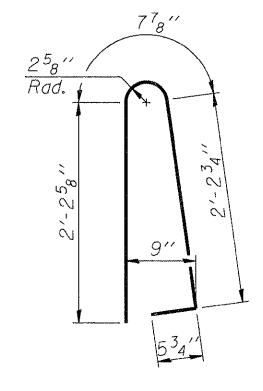
Not to Scale



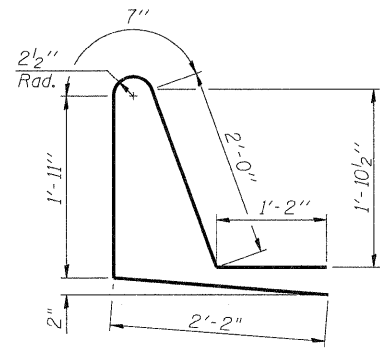
**BAR c(E)**



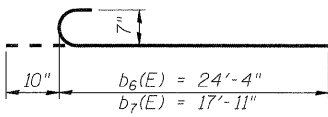
**BAR d1(E)**



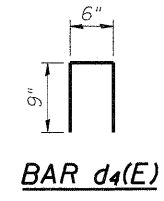
**BAR d2(E)**



**BAR d3(E)**



**BARS b6(E), & b7(E)**



**BAR d4(E)**

**SUPERSTRUCTURE DETAILS**  
CENTRAL AVENUE (FAU ROUTE 5102)  
OVER KENT CREEK  
SECTION NO. 09-00557-00-BR  
CITY OF ROCKFORD  
WINNEBAGO COUNTY  
STRUCTURE NO. 101-6124

DESIGNED	KMA
CHECKED	RGD
DRAWN	WJH
CHECKED	RGD

FILE NAME: 090026-sup04.dgn  
PLOT DRIVER: pdt.plt  
PEN TABLE: standard-trans.tbl 1/26/2010

**SEC GROUP, INC.**  
An HR Green Company  
420 N. Front Street, McHenry, IL 60050  
1-815-385-1778 1-815-385-1781  
www.secgroupinc.com  
McHenry, IL • Yorkville, IL • New Lenox, IL • Chicago, IL

SHEET NO. **5-7**  
**5-9** SHEETS

F.A.U. RTE. 5102	SECTION 09-00557-00-BR	COUNTY WINNEAGO	TOTAL SHEETS 18	SHEET NO. 14
CONTRACT NO. 85508			DATE: 1/26/10	
FED. ROAD DIST. NO. 2 ILLINOIS		FED. AID PROJECT BHM 5099 (C61)		