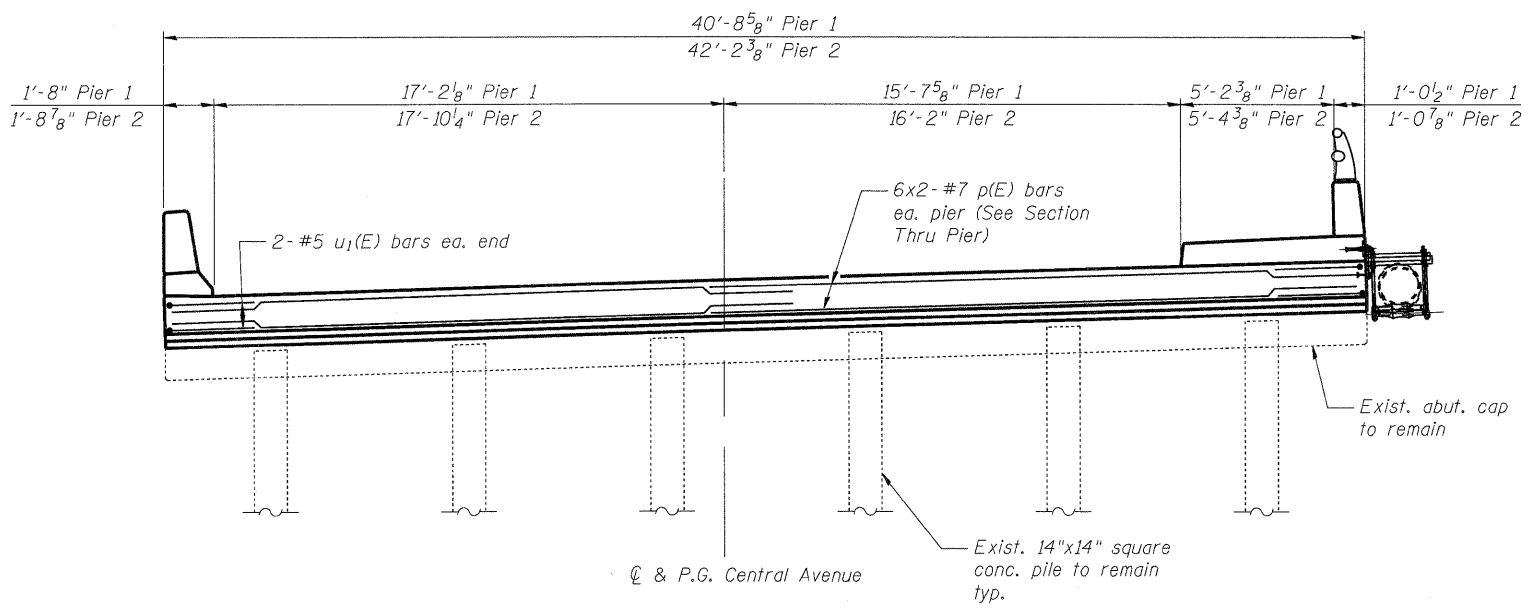
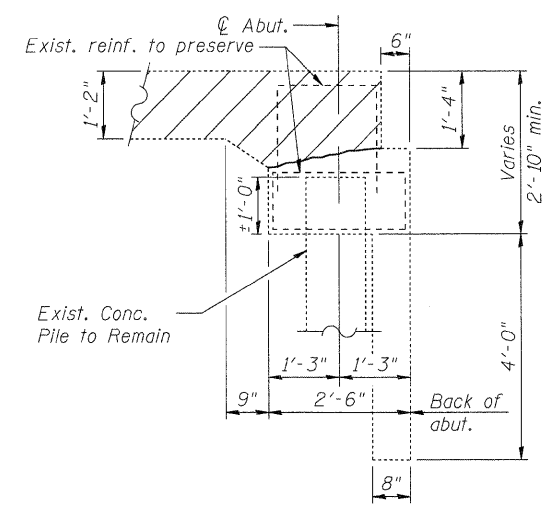


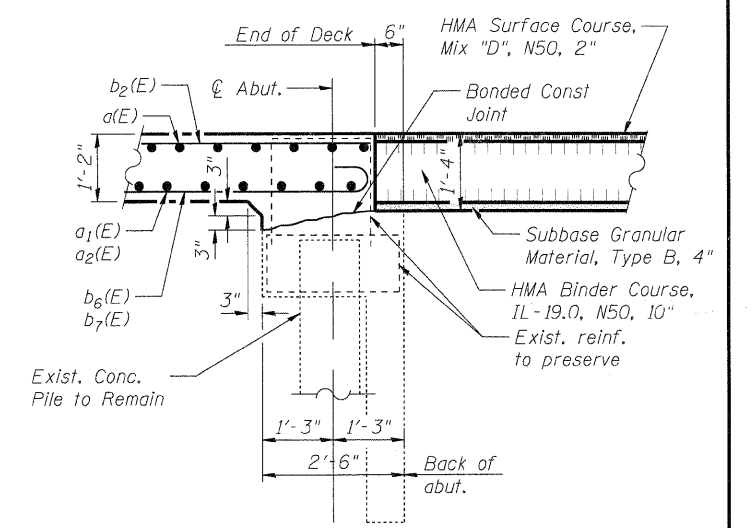
CL & P.G. Central Avenue
ABUTMENT ELEVATION
 South Abutment looking South
 (North Abutment similar, but opposite hand)
 Dimensions along skew



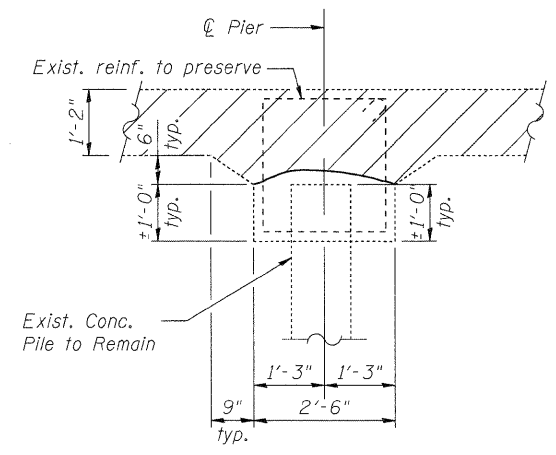
CL & P.G. Central Avenue
PIER ELEVATION
 Looking South
 Dimensions along skew



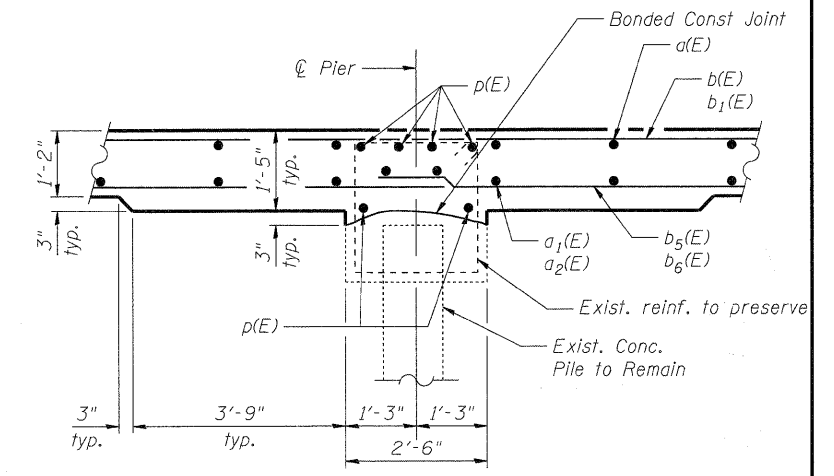
REMOVAL SECTION THRU ABUT.



SECTION THRU ABUT.



REMOVAL SECTION THRU PIER



SECTION THRU PIER

NOTES

1. See Superstructure Bill of Materials for u(E), u₁(E), and p(E) bars.
2. Existing reinforcement shall be cleaned and incorporated into the new construction. Cost included in Removal of Existing Superstructures.

SUBSTRUCTURE DETAILS
 CENTRAL AVENUE (FAU ROUTE 5102)
 OVER KENT CREEK
 SECTION NO. 09-00557-00-BR
 CITY OF ROCKFORD
 WINNEBAGO COUNTY
 STRUCTURE NO. 101-6124

DATE: 1/26/10

DESIGNED	KMA
CHECKED	RGD
DRAWN	WJH
CHECKED	RGD

FILE NAME: 090026-sub01.dgn
 PLOT DRIVER: pdf.plt
 PEN TABLE: standard-trans.tbl 1/26/2010

SEC GROUP, INC.
 An HR Green Company
 420 N. Front Street, McHenry, IL 60050
 T. 815.385.1778 F. 815.385.1781
 www.secgroupinc.com
 • McHenry, IL • Yorkville, IL • New Lanox, IL • Chicago, IL

SHEET NO. S-9	F.A.U. RTE.	SECTION	COUNTY	TOTAL SHEETS	SHEET NO.
	5102	09-00557-00-BR	WINNEAGO	18	16
S-9 SHEETS			CONTRACT NO. 85508		
FED. ROAD DIST. NO. 2		ILLINOIS	FED. AID PROJECT		BHM 5099 (081)