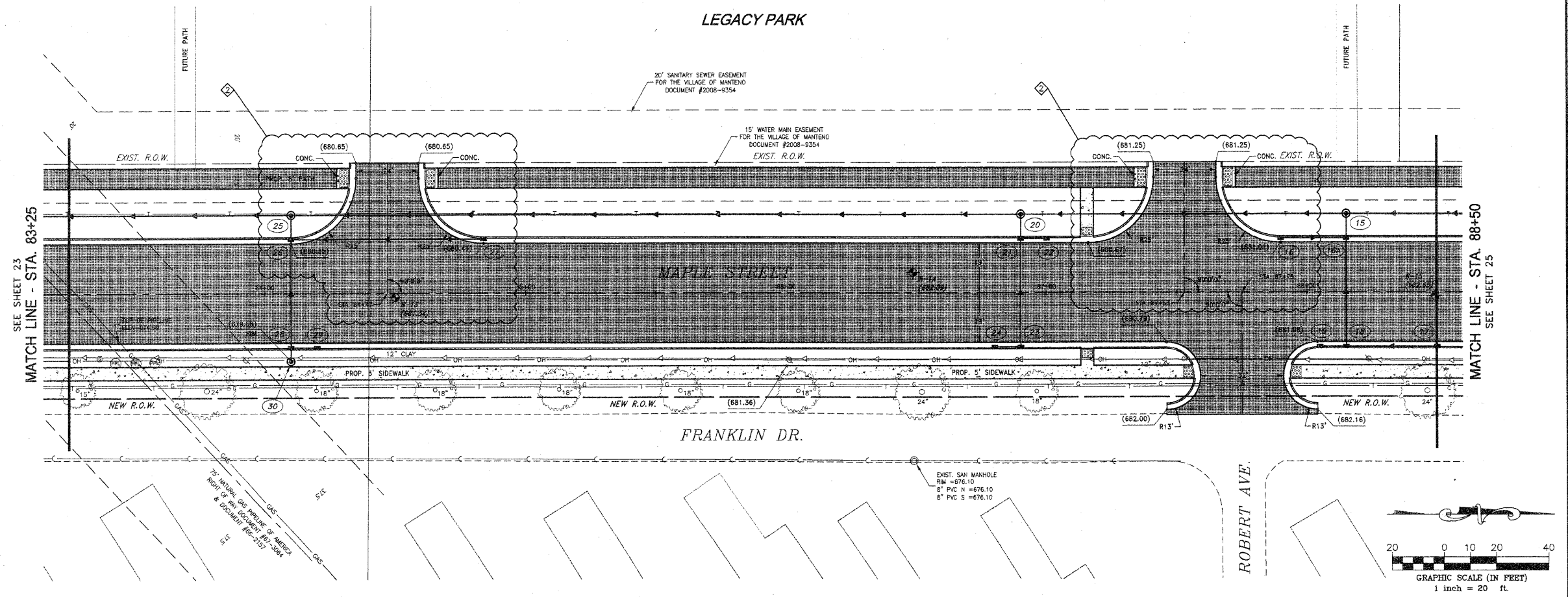
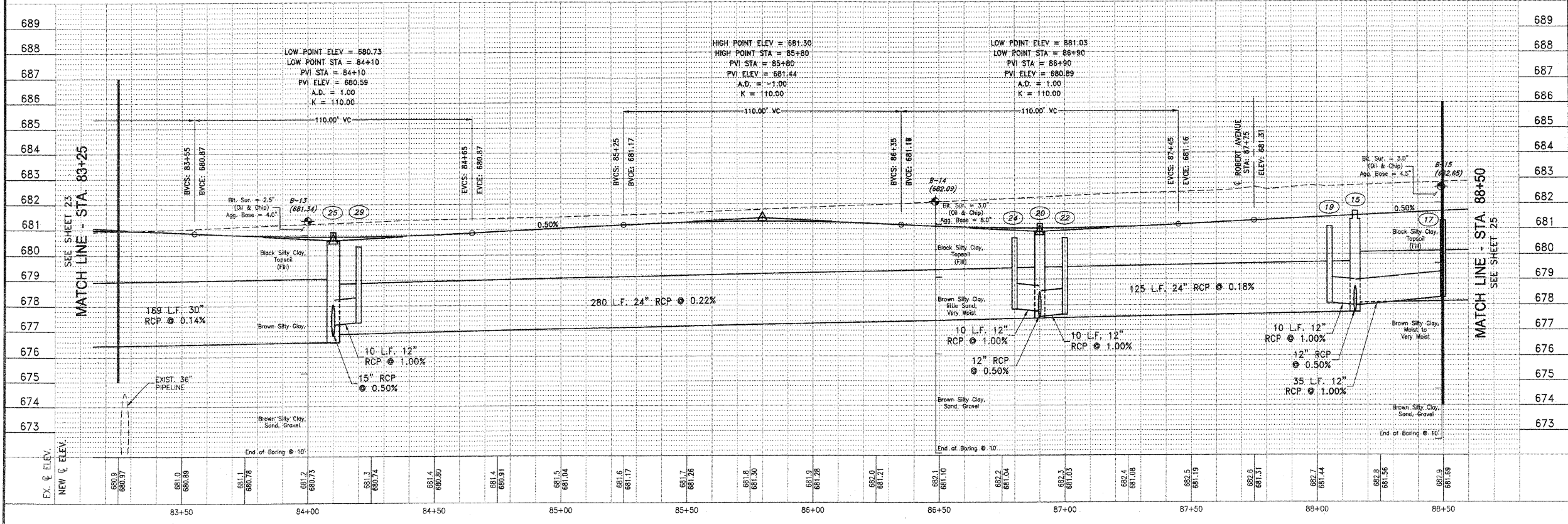
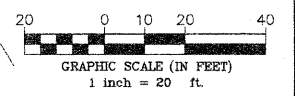


LEGACY PARK



SEE SHEET 23
MATCH LINE - STA. 83+25

MATCH LINE - STA. 88+50
SEE SHEET 25



SECTION	COUNTY	TOWNSHIP	SHEET NO.
**	KANKAKEE	58	24
CONTRACT NO. 87252			
FED. ROAD DIST. NO. ILLINOIS			
FED. AID PROJECT			
* RONNIE GRAY DRIVE (6502) MAPLE STREET (6512)			
** 00-00054-00-FP			
TYSON ENGINEERING, INC.			
CONSULTING CIVIL ENGINEERS LAND SURVEYORS DESIGN FIRM LICENSE #184-001136			
367 SOUTH SCHUYLER AVENUE KANKAKEE, ILLINOIS 60901 PHONE (815) 932-7408			
This document and the ideas and designs incorporated herein, as an instrument of professional service, is the property of Tyson Engineering Inc. and is not to be used in whole or in part, for any other project without written authorization of Tyson Engineering Inc.			
Do not scale drawings. Use dimensions only.			
Contractor shall be responsible for verifying all dimensions.			
Information herein and herein is confidential.			
REVISIONS			
NO.	DATE	BY	DESCRIPTION
1	10/30/09	MRG	PER IDOT REVIEW
2	4/9/10	MRG	ADDENDUM
PROJECT: VILLAGE OF MANTENO MAPLE STREET AND RONNIE GRAY DRIVE IMPROVEMENTS MANTENO, ILLINOIS			
SECTION 00-00054-00-FP			
DATE:	9/25/09	JOB NO.	E06030
SCALE:	HORZ.: 1"=20' VERT.: 1"=2'	FILE NO.	
DRAWN BY:	MRG	SHEET	24
CHECKED BY:	SRM		

revised 4/9/10