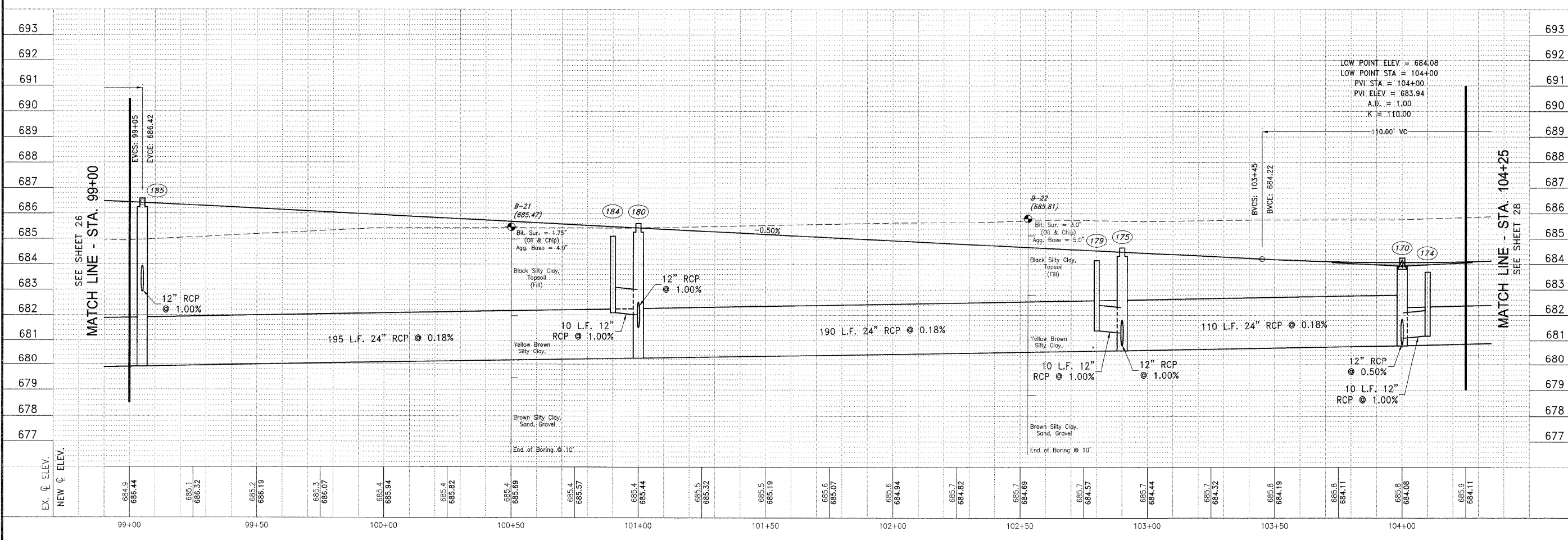
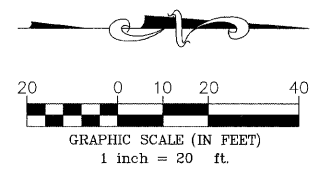
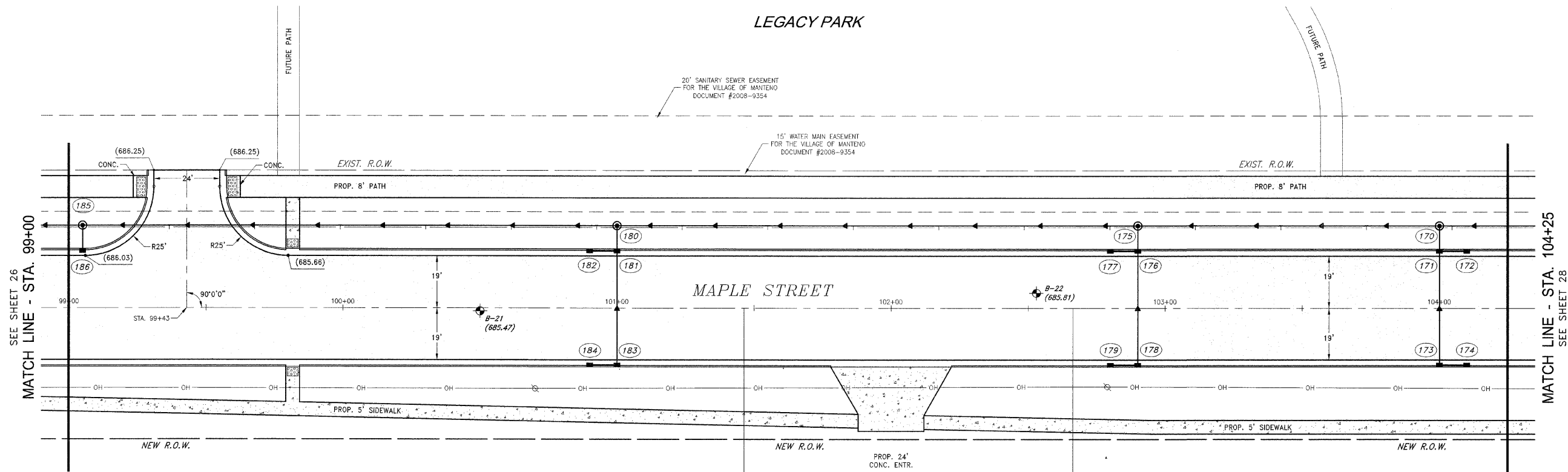


LEGACY PARK



F.A.J. RITE	SECTION	COUNTY	TOTAL SHEETS	SHEET NO.
**	**	KANKAKEE	59	27

CONTRACT NO. 87252
 FED. ROAD DIST. NO. ILLINOIS FED. AID PROJECT

* RONNIE GRAY DRIVE (6502)
 MAPLE STREET (6512)
 ** 00-00054-00-FP

TYSON ENGINEERING, INC.
 CONSULTING CIVIL ENGINEERS
 LAND SURVEYORS
 DESIGN FIRM LICENSE #184-001136
 367 SOUTH SCHUYLER AVENUE
 KANKAKEE, ILLINOIS 60901
 PHONE (815) 932-7406

This document and the ideas and designs incorporated herein, as an instrument of professional service, is the property of Tyson Engineering Inc. and is not to be used in whole or in part, for any other project without written authorization of Tyson Engineering Inc.
 Do not scale drawings. Use dimensions only.
 Contractor shall be responsible for verifying all dimensions.
 Information hereon and herein is confidential.

REVISIONS			
NO.	DATE	BY	DESCRIPTION

MAPLE STREET
 PLAN AND PROFILE
 STA. 99+00 TO STA. 104+25

VILLAGE OF MANTENO
MAPLE STREET AND RONNIE GRAY DRIVE IMPROVEMENTS
 MANTENO, ILLINOIS

PROJECT: PRELIMINARY NOT FOR CONSTRUCTION

DATE: 9/25/09	JOB NO. E06030
SCALE: HORZ.: 1"=20' VERT.: 1"=2'	FILE NO.
DRAWN BY: MRG	SHEET 27
CHECKED BY: SRM	

11/20/09 10:52 AM C:\PROJECTS\87252\DRAWING\87252-00-FP.DWG PLOT: 27, 28, 100, 11/20/09 11:43:22 AM