

F.A.S. ROUTE NO.	SECTION	ILLINOIS PROJECT	CONTRACT NO.	COUNTY	TOTAL SHEETS	SHEET NUMBER
268	06-00173-00-SW	TE-00D3(58)	87359	LASALLE	15	4

SCHEDULE OF QUANTITIES

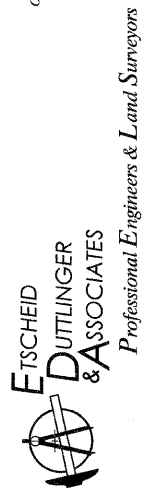
<u>20200100 EARTH EXCAVATION</u>	
<u>CU YD</u>	<u>LOCATION</u>
286	STA 0+00 (SW) TO STA 14+14
1	STA 16+60 TO STA 16+69
2	STA 17+76 TO STA 17+95
1	STA 19+31 TO STA 19+40
1	STA 20+50 TO STA 20+72
292	TOTAL
<u>21101615 TOPSOIL FURNISH & PLACE, 4"</u>	
<u>SQ YD</u>	<u>LOCATION</u>
499	STA 0+00 (SW) TO STA 14+14
7	STA 16+60 TO STA 16+69
20	STA 17+76 TO STA 17+95
10	STA 19+31 TO STA 19+40
45	STA 20+50 TO STA 20+72
581	TOTAL
<u>25000115 SEEDING, CLASS 1B</u>	
<u>ACRE</u>	<u>LOCATION</u>
0.1	STA 0+00 (SW) TO STA 14+14
0.1	AS REQUIRED AROUND SIDEWALKS AND ABUTMENTS, AND AS DIRECTED BY THE ENGINEER
0.2	TOTAL
<u>25000400 NITROGEN FERTILIZER NUTRIENT</u>	
<u>POUND</u>	<u>LOCATION</u>
9	STA 0+00 (SW) TO STA 14+14
9	AS REQUIRED AROUND SIDEWALKS AND ABUTMENTS, AND AS DIRECTED BY THE ENGINEER
18	TOTAL
<u>25000500 PHOSPHOROUS FERTILIZER NUTRIENT</u>	
<u>POUND</u>	<u>LOCATION</u>
9	STA 0+00 (SW) TO STA 14+14
9	AS REQUIRED AROUND SIDEWALKS AND ABUTMENTS, AND AS DIRECTED BY THE ENGINEER
18	TOTAL
<u>25000600 POTASSIUM FERTILIZER NUTRIENT</u>	
<u>POUND</u>	<u>LOCATION</u>
9	STA 0+00 (SW) TO STA 14+14
9	AS REQUIRED AROUND SIDEWALKS AND ABUTMENTS, AND AS DIRECTED BY THE ENGINEER
18	TOTAL
<u>25100115 MULCH, METHOD 2</u>	
<u>ACRE</u>	<u>LOCATION</u>
0.1	STA 0+00 (SW) TO STA 14+14
0.1	AS REQUIRED AROUND SIDEWALKS AND ABUTMENTS, AND AS DIRECTED BY THE ENGINEER
0.2	TOTAL
<u>28000400 PERIMETER EROSION BARRIER</u>	
<u>FOOT</u>	<u>LOCATION</u>
609	STA 0+00 (SW) TO STA 14+14
609	TOTAL
<u>28000500 INLET & PIPE PROTECTION</u>	
<u>EACH</u>	<u>LOCATION</u>
1	STA 11+44 RT
1	STA 14+06 RT
2	TOTAL
<u>35100120 AGGREGATE BASE COURSE, TYPE A, 2"</u>	
<u>SQ YD</u>	<u>LOCATION</u>
386.5	STA 0+00 (SW) TO STA 14+14
13	STA 16+60 TO STA 16+69
6.5	STA 17+76 TO STA 17+95
6.5	STA 19+31 TO STA 19+40
15	STA 20+50 TO STA 20+72
5.5	STA 21+32 TO STA 21+37
433	TOTAL

<u>42400100 PORTLAND CEMENT CONCRETE SIDEWALK, 4"</u>	
<u>SQ FT</u>	<u>LOCATION</u>
3479	STA 0+00 (SW) TO STA 14+14
49	STA 21+32 TO STA 21+37
3528	TOTAL
<u>42400200 PORTLAND CEMENT CONCRETE SIDEWALK, 5"</u>	
<u>SQ FT</u>	<u>LOCATION</u>
58	STA 16+60 TO STA 16+69
116	STA 17+76 TO STA 17+95
58	STA 19+31 TO STA 19+40
134	STA 20+50 TO STA 20+72
366	TOTAL
<u>42400800 DETECTABLE WARNINGS</u>	
<u>SQ YD</u>	<u>LOCATION</u>
14	STA 20+72
12	STA 21+32
26	TOTAL
<u>44000100 PAVEMENT REMOVAL</u>	
<u>SQ YD</u>	<u>LOCATION</u>
4	STA 16+60 TO STA 16+71
70	STA 20+36 TO STA 20+75
74	TOTAL
<u>44000600 SIDEWALK REMOVAL</u>	
<u>SQ FT</u>	<u>LOCATION</u>
116	STA 17+66 TO STA 17+95
49	STA 21+32 TO STA 21+37
165	TOTAL
<u>* 50104605 CONCRETE RETAINING WALL REMOVAL</u>	
<u>CU YD</u>	<u>LOCATION</u>
0.5	STA 16+76
0.2	STA 17+61
0.4	STA 19+55
0.5	STA 20+35
1.6	TOTAL
<u>50200100 STRUCTURE EXCAVATION</u>	
<u>CU YD</u>	<u>LOCATION</u>
8	STA 16+69
8	STA 17+76
7	STA 19+40
7	STA 20+50
30	TOTAL
<u>50300225 CONCRETE STRUCTURES</u>	
<u>CU YD</u>	<u>LOCATION</u>
2.6	STA 16+69
2.6	STA 17+76
2.6	STA 19+40
2.6	STA 20+50
10.4	TOTAL
<u>50800105 REINFORCEMENT BARS</u>	
<u>POUND</u>	<u>LOCATION</u>
230	STA 16+69
230	STA 17+76
230	STA 19+40
230	STA 20+50
920	TOTAL
<u>50900605 HANDRAIL REMOVAL</u>	
<u>FOOT</u>	<u>LOCATION</u>
10	STA 20+36
10	TOTAL

<u>51201300 FURNISH STEEL PILES HP 8X36</u>	
<u>FOOT</u>	<u>LOCATION</u>
38	STA 16+69
40	STA 17+76
40	STA 19+40
40	STA 20+50
158	TOTAL
<u>51202305 DRIVING PILES</u>	
<u>FOOT</u>	<u>LOCATION</u>
36	STA 16+69
38	STA 17+76
38	STA 19+40
38	STA 20+50
150	TOTAL
<u>* 60600705 CONCRETE CURB, TYPE B (ABUTTING EXISTING PAVEMENT)</u>	
<u>FOOT</u>	<u>LOCATION</u>
77	STA 20+36 TO STA 20+75
77	TOTAL
<u>* 66410300 CHAIN LINK FENCE REMOVAL</u>	
<u>ACRE</u>	<u>LOCATION</u>
22	STA 17+58 TO STA 17+79
22	TOTAL
<u>67100100 MOBILIZATION</u>	
<u>L SUM</u>	<u>LOCATION</u>
1	AS REQUIRED
1	TOTAL
<u>70102620 TRAFFIC CONTROL & PROTECTION STANDARD 701501</u>	
<u>L SUM</u>	<u>LOCATION</u>
1	AS REQUIRED OR AS DIRECTED BY THE ENGINEER
1	TOTAL
<u>78001150 PAINT PAVEMENT MARKING -- LINE 12"</u>	
<u>FOOT</u>	<u>LOCATION</u>
121	STA 20+72 TO STA 21+32
121	TOTAL
<u>* XX001758 WOOD FENCE REMOVAL</u>	
<u>FOOT</u>	<u>LOCATION</u>
32	STA 17+61 TO STA 17+90
<u>* X0322508 PEDESTRIAN TRUSS SUPERSTRUCTURE</u>	
<u>SQ FT</u>	<u>LOCATION</u>
630	STA 16+70 TO STA 17+75
648	STA 19+41 TO STA 20+49
1278	TOTAL

F.A.S. 268 - MAIN STREET
SECTION 06-00173-00-SW
CITY OF MARSEILLES, LASALLE COUNTY

1804 GEMINI CIRCLE
 OTTAWA, IL 61350-1692
 TEL: 815-434-3925
 FAX: 815-434-3933



PROFESSIONAL DESIGN
 FIRM # 184-000711
 DATE PLOTTED:
 OCTOBER 21, 2009
 DRAWN BY:
 A.R.G.
 CHECKED BY:
 PROJECT NUMBER:
 2057.92
 DRAWING FILE:
 205792_NOTES

SHEET NO.
4 OF 15