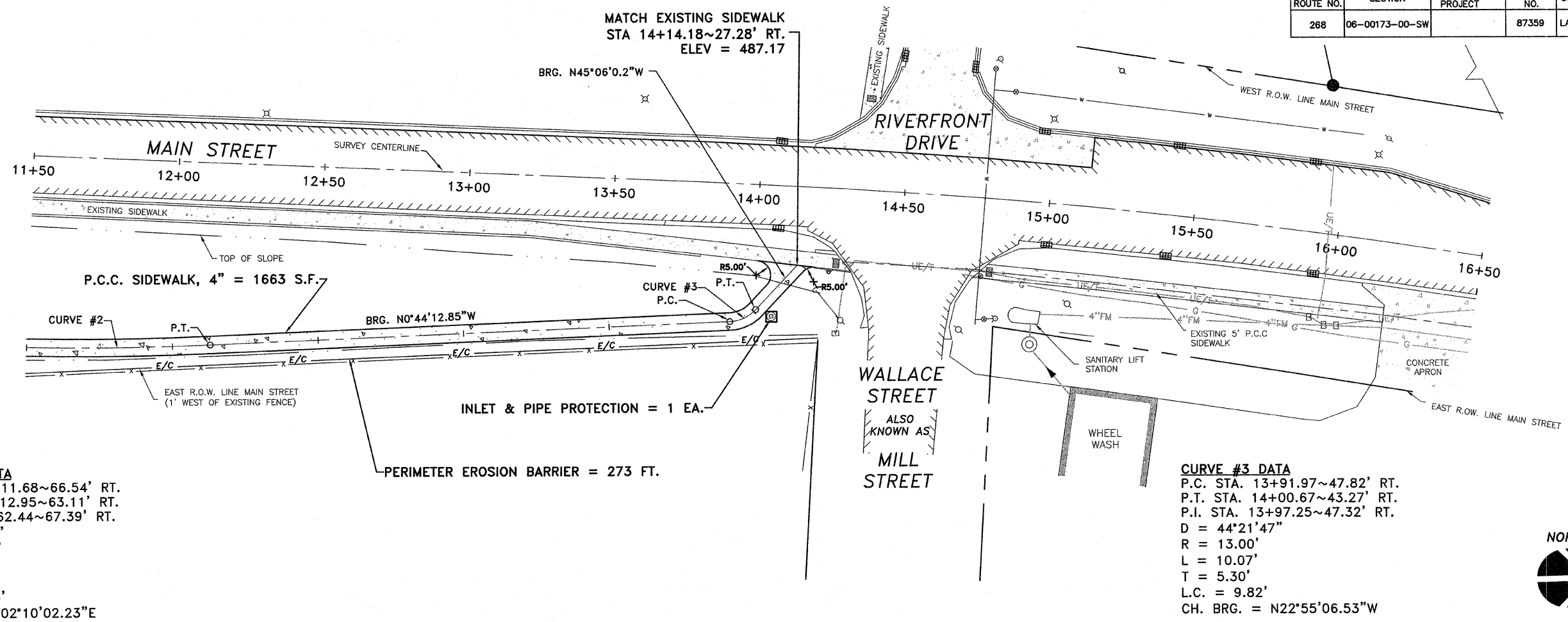


F.A.S. ROUTE NO.	SECTION	ILLINOIS PROJECT	CONTRACT NO.	COUNTY	TOTAL SHEETS	SHEET NUMBER
268	06-00173-00-SW		87359	LASALLE	15	6

F.A.S. 268 - MAIN STREET
SECTION 06-00173-00-SW
CITY OF MARSEILLES, LASALLE COUNTY

SEE SHEET NO. 5

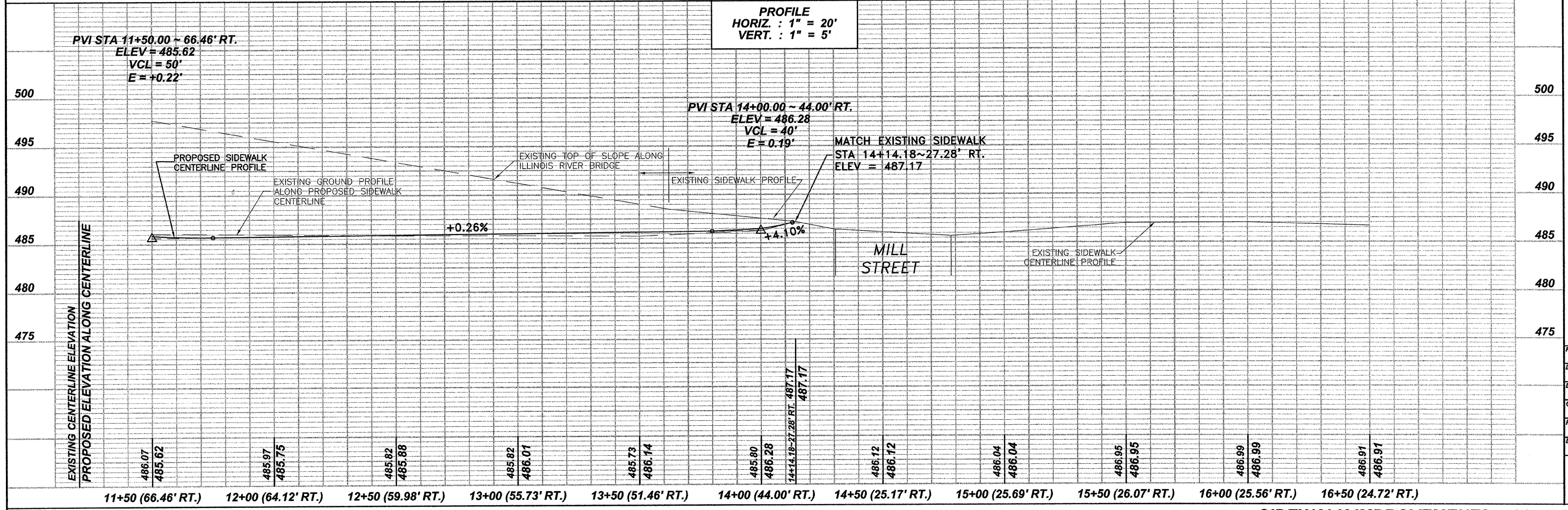
SEE SHEET NO. 7



CURVE #2 DATA
P.C. STA. 11+11.68~66.54' RT.
P.T. STA. 12+12.95~63.11' RT.
P.I. STA. 11+62.44~67.39' RT.
D = 05°48'30"
R = 1,000.00'
L = 101.38'
T = 50.73'
L.C. = 101.33'
CH. BRG. = N02°10'02.23"E

CURVE #3 DATA
P.C. STA. 13+91.97~47.82' RT.
P.T. STA. 14+00.67~43.27' RT.
P.I. STA. 13+97.25~47.32' RT.
D = 44°21'47"
R = 13.00'
L = 10.07'
T = 5.30'
L.C. = 9.82'
CH. BRG. = N22°55'06.53"W

SCALES
PLAN
HORIZ. : 1" = 20'
PROFILE
HORIZ. : 1" = 20'
VERT. : 1" = 5'



1304 GEMINI CIRCLE
OTTAWA, IL 61350-6922
TEL: 815-834-3923
FAX: 815-834-3953

ETSCHEID
DUTTLINGER
& ASSOCIATES INC.
Professional Engineers & Land Surveyors

PROFESSIONAL DESIGN
FIRM # 184-000711
DATE PLOTTED:
OCTOBER 21, 2009
DRAWN BY:
R.M.S.
CHECKED BY:
PROJECT NUMBER:
2057.92
DRAWING FILE:
J:\200792_BASE2.DWG
SHEET NO.