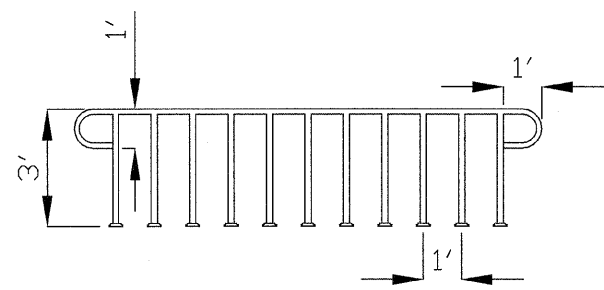
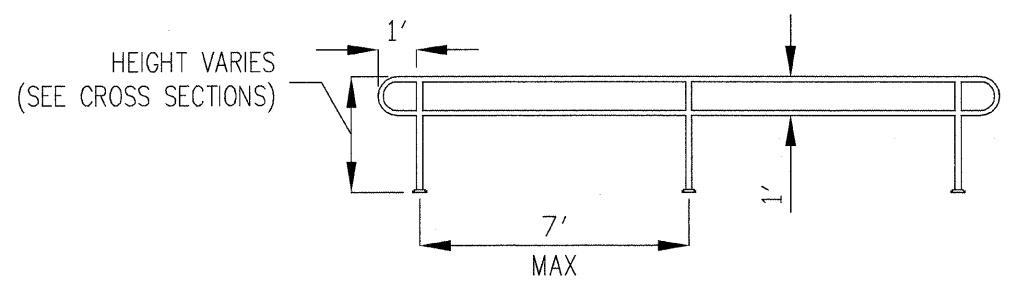


F.A.U. RTE.	SECTION	COUNTY	TOTAL SHEETS	SHEET NO.
N/A	08-00095-00-SP	KANKAKEE	06	06
CONTRACT NO.: 87371				



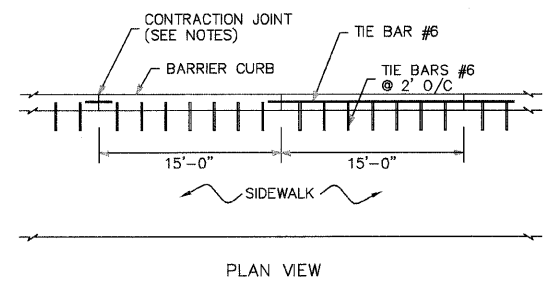
PIPE HANDRAIL (SPECIAL)
N.T.S.

NOTE:
PIPE HANDRAIL SHALL HAVE GALVANIZED FINISH



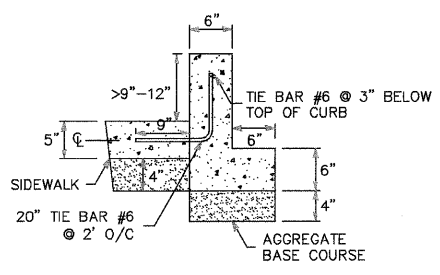
PIPE HANDRAIL
N.T.S.

NOTE:
PIPE HANDRAIL SHALL HAVE GALVANIZED FINISH

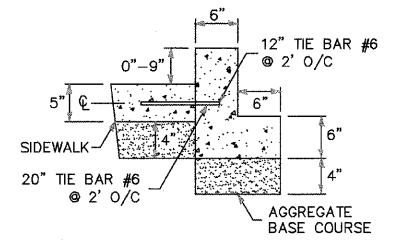


PLAN VIEW

- CONTRACTION JOINT CONSTRUCTION NOTES:
- CONSTRUCTION OPTIONS:
 - FORM WITH 3/8" THICK STEEL TEMPLATE 2" DEEP, AND SEAL.
 - SAW AT 4 TO 24 HOURS, AND SEAL.
 - TIE BARS:
 - CONTINUOUS FOR CURB HEIGHT > 9"
 - 18" FOR CURB HEIGHT 0"-9"

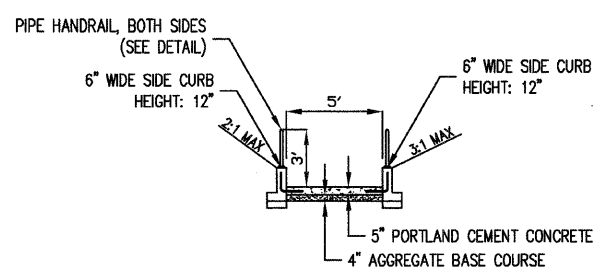


EXPOSED HEIGHT = >9"

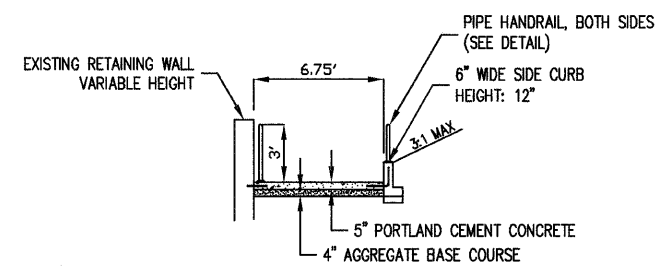


EXPOSED HEIGHT = 0"-9"

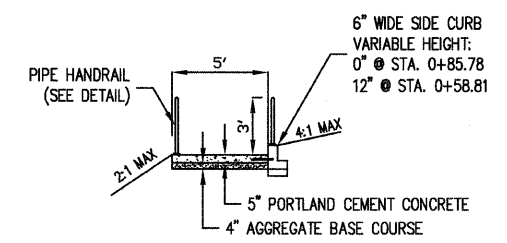
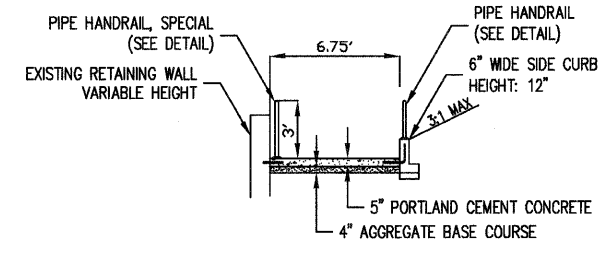
CONCRETE CURB (SPECIAL)
DETAIL



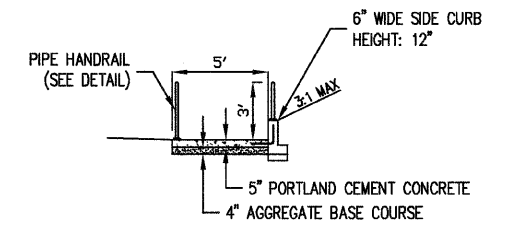
TYPICAL CROSS SECTION
STA 0+09.9 TO STA 0+12.43



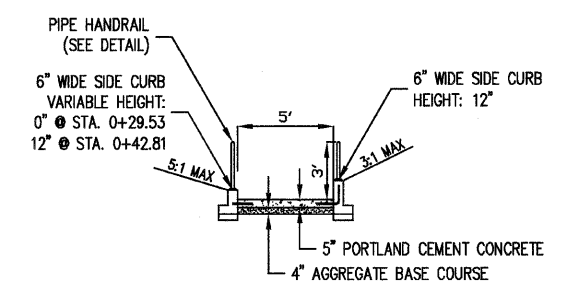
TYPICAL CROSS SECTION
STA 0+00 TO STA 0+09.9



TYPICAL CROSS SECTION
STA 0+58.81 TO STA 0+85.78



TYPICAL CROSS SECTION
STA 0+42.81 TO STA 0+58.81



TYPICAL CROSS SECTION
STA 0+29.53 TO STA 42.81

M. GINGERICH, GERAUX ASSOCIATES
240 N. Industrial Drive
Bradley, Illinois 60915
815-939-4921
FAX: 815-939-9810

REVISIONS		
DATE	BY	DESCRIPTION
11/17/2009	JWG	PER IDOT REVIEW
1/19/2010	JWG	PER IDOT REVIEW
2/04/2010	JWG	PER IDOT REVIEW

ILLINOIS DEPARTMENT OF TRANSPORTATION
VILLAGE OF BRADLEY
SAFE ROUTES TO SCHOOLS
TYPICAL CROSS-SECTIONS
SCALE: 1"=10'
DATE: 12/21/08
DRAWN BY: JWG
CHECKED BY: