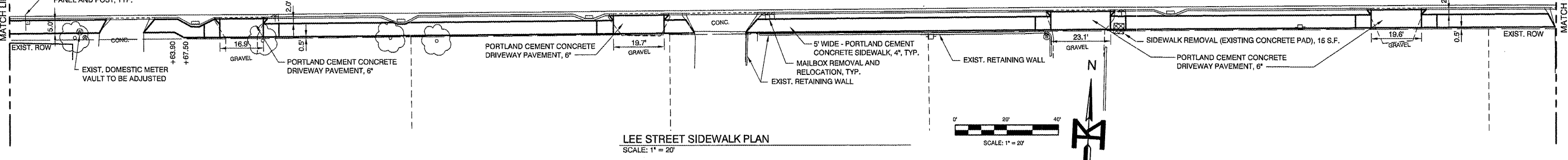
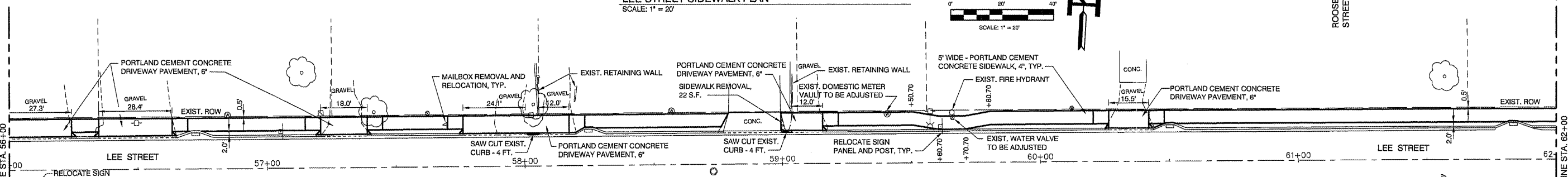
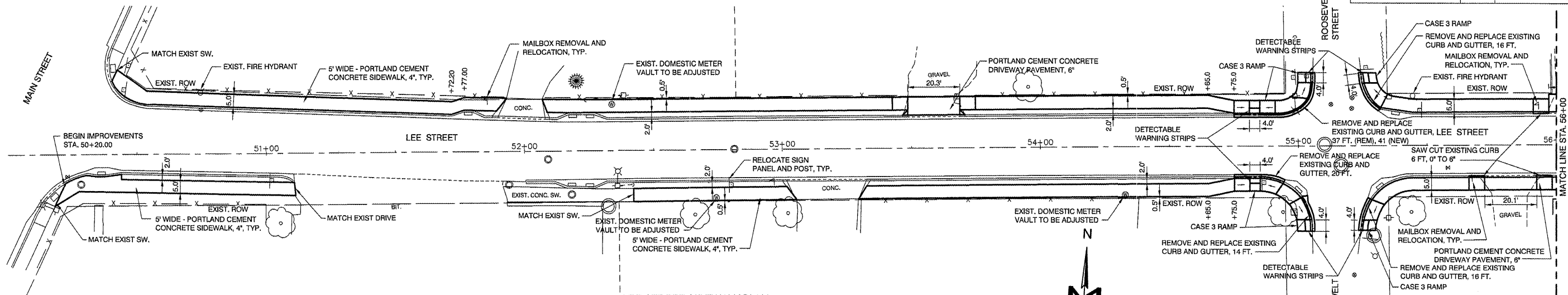
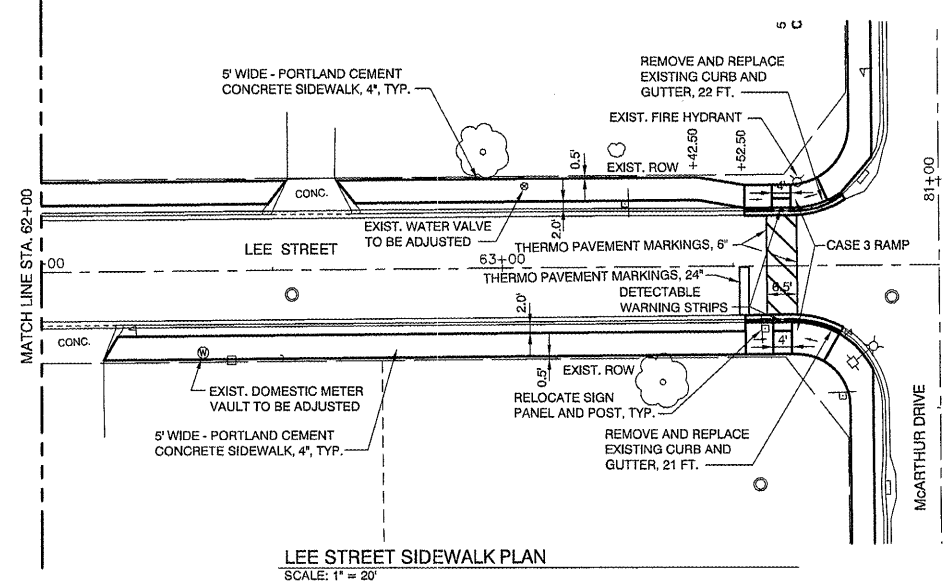


ROUTE NO.	SECTION	COUNTY	TOTAL SHEETS	SHEET NO.
-	08-00024-00-SW	TAZEWELL	19	5
FEDERAL ROAD DIST. NO.	ILLINOIS	CONTRACT NO.	69505	



LEGEND

---	EXIST. RIGHT OF WAY LINE	⊠	EXIST. HAND HOLE
---	ADJACENT PROPERTY LINE	⊞	EXIST. SIGN
---	CENTERLINE OF ROAD	⊞	EXIST. TELEPHONE PEDESTAL
---	EXIST. FENCE	⊞	EXIST. WATER METER
⊞	EXIST. ELECTRIC METER	⊞	EXIST. WATER VALVE
⊞	EXIST. GAS VALVE	⊞	EXIST. CONIFER TREE
⊞	EXIST. GAS METER	⊞	EXIST. DECIDUOUS TREE
⊞	EXIST. FIRE HYDRANT	⊞	EXIST. SHRUB / BUSH
⊞	EXIST. STORM INLET	⊞	LANDSCAPE
⊞	EXIST. LIGHT	⊞	CONC
⊞	EXIST. MAILBOX	⊞	BIT
⊞	EXIST. MANHOLE	⊞	



M MOHR & KERR ENGINEERING & LAND SURVEYING, P.C.
7336 N. University Ave. Office: (309) 692-8500
Peoria, Illinois 61614 Fax: (309) 692-8501
www.mohrandkerr.com Professional Design Firm #184.005091

REV.	DATE	NATURE OF REVISION	CHECKED	DATE

FILE NAME: 2/09/07 *DWG PLAN-VIEWS-09-082.DWG

SURVEYED	MOP	CLIENT:
DRAWN	DEH	VILLAGE OF NORTH PEKIN
CHECKED	SDK	TAZEWELL COUNTY, ILLINOIS
SCALE		
DATE	02-15-10	

TITLE: NORTH PEKIN SIDEWALK IMPROVEMENTS
LEE STREET SIDEWALK PLAN VIEWS

PROJECT NO. 09-07
SHEET 5 OF 19
DRAWING NO. 5