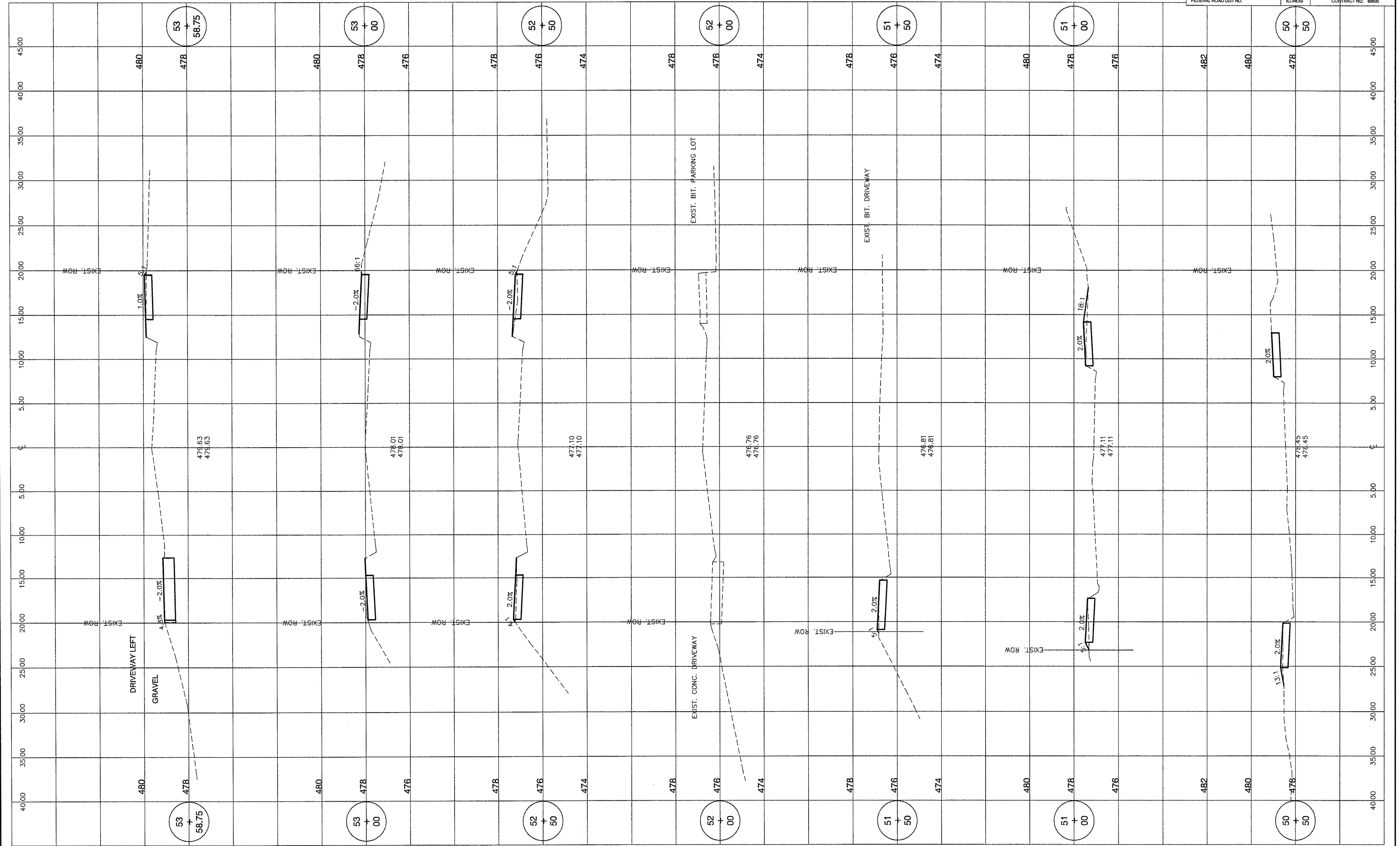


ROUTE NO.	SECTION	COUNTY	TOTAL SHEETS	SHEET NO.
08-00024-00-SW	TAZEWELL	ILLINOIS	19	12
FEDERAL ROAD DIST. NO.		CONTRACT NO.	89505	



M MOHR & KERR ENGINEERING & LAND SURVEYING, P.C.
 7336 N. University Ave. Office: (309) 692-8500
 Peoria, Illinois 61614 Fax: (309) 692-8501
 www.mohrlandkerr.com Professional Design Firm #184.005091

REV.	DATE	NATURE OF REVISION	CHECKED

FILE NAME: 2\09-037 *DWG\SH112-LE-01002.DWG

SURVEYED	MDP	CLIENT: VILLAGE OF NORTH PEKIN TAZEWELL COUNTY, ILLINOIS
DRAWN	DEH	
CHECKED	SDK	
SCALE	1" = 5' H 1" = 2' V	
DATE	02-15-10	TITLE:

TITLE:
 NORTH PEKIN SIDEWALK IMPROVEMENTS
 LEE STREET CROSS SECTIONS
 STA. 50+50 TO STA. 53+58.75

PROJECT NO.	09-087
SHEET 12 OF 19	
DRAWING NO.	12