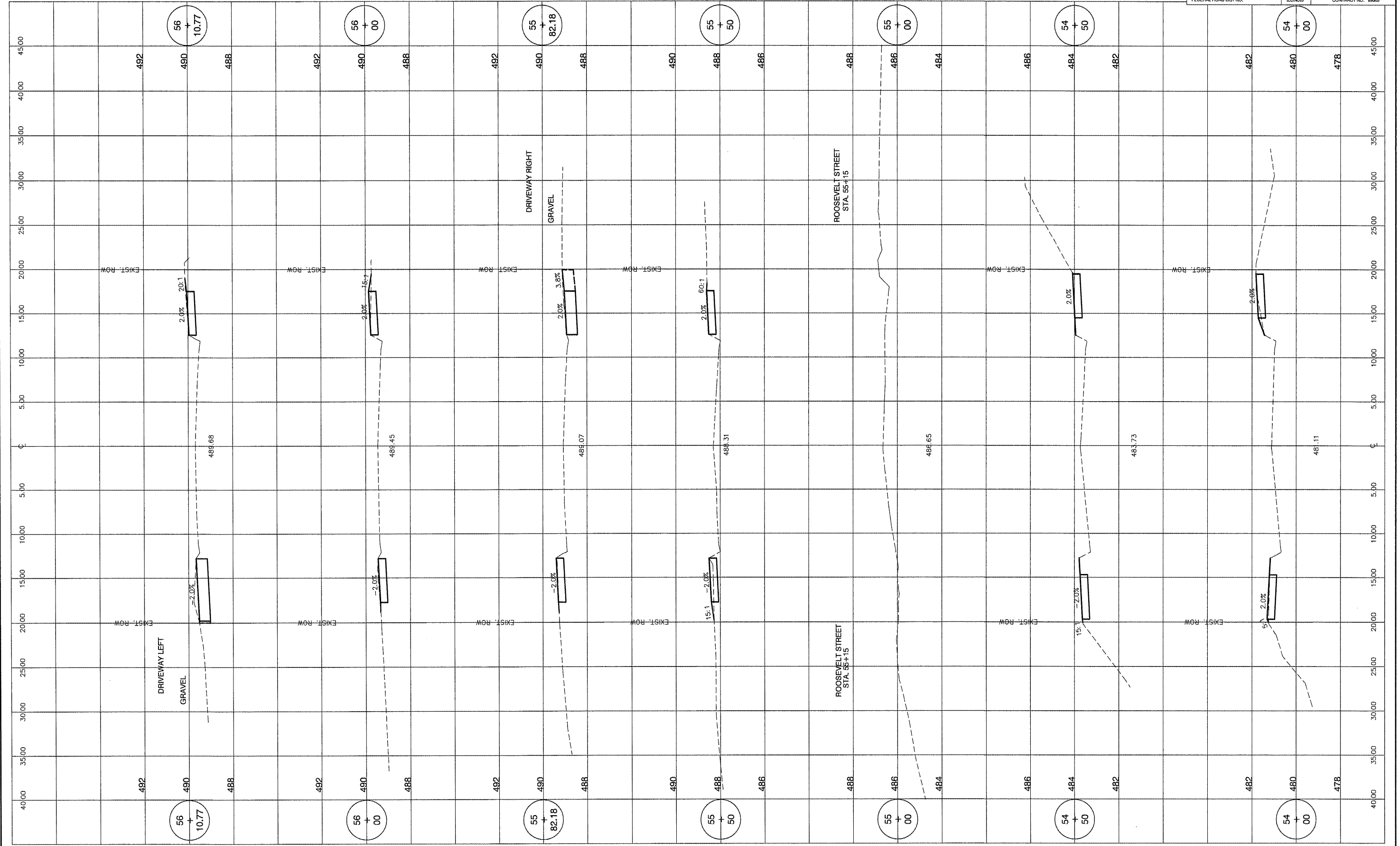


ROUTE NO.	SECTION	COUNTY	TOTAL SHEETS	SHEET NO.
	08-00024-00-SW	TAZEWELL	19	13
FEDERAL ROAD DIST NO.		ILLINOIS	CONTRACT NO. 89908	



M MOHR & KERR ENGINEERING & LAND SURVEYING, P.C.
 7336 N. University Ave. Office: (309) 692-8500
 Peoria, Illinois 61614 Fax: (309) 692-8501
 www.mohrandkerr.com Professional Design Firm #184.005091

REV.	DATE	NATURE OF REVISION	CHECKED

CLIENT: VILLAGE OF NORTH PEKIN
 TAZEWELL COUNTY, ILLINOIS

SURVEYED MDP
 DRAWN DEH
 CHECKED SDK
 SCALE 1" = 5' H 1" = 2' V
 DATE 02-15-10

TITLE: NORTH PEKIN SIDEWALK IMPROVEMENTS
 LEE STREET CROSS SECTIONS
 STA. 54+00 TO STA. 56+10.77

PROJECT NO.	09-087
SHEET NO.	13 OF 19
DRAWING NO.	13