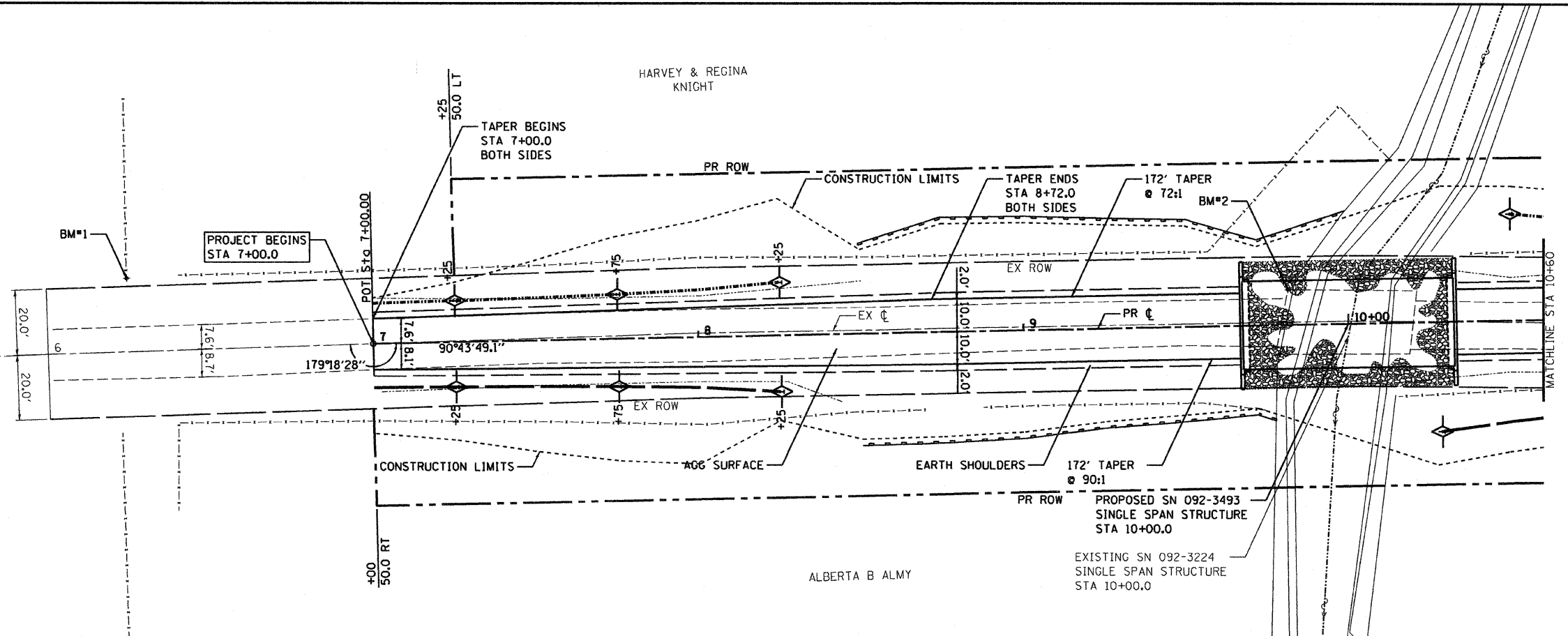
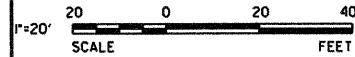


PLAN	SURVEYED	DATE
	PLOTTED	
	CHECKED	
	BY	
	NO. OF WAYS CHECKED	
	CADD FILE NAME	
	NO.	

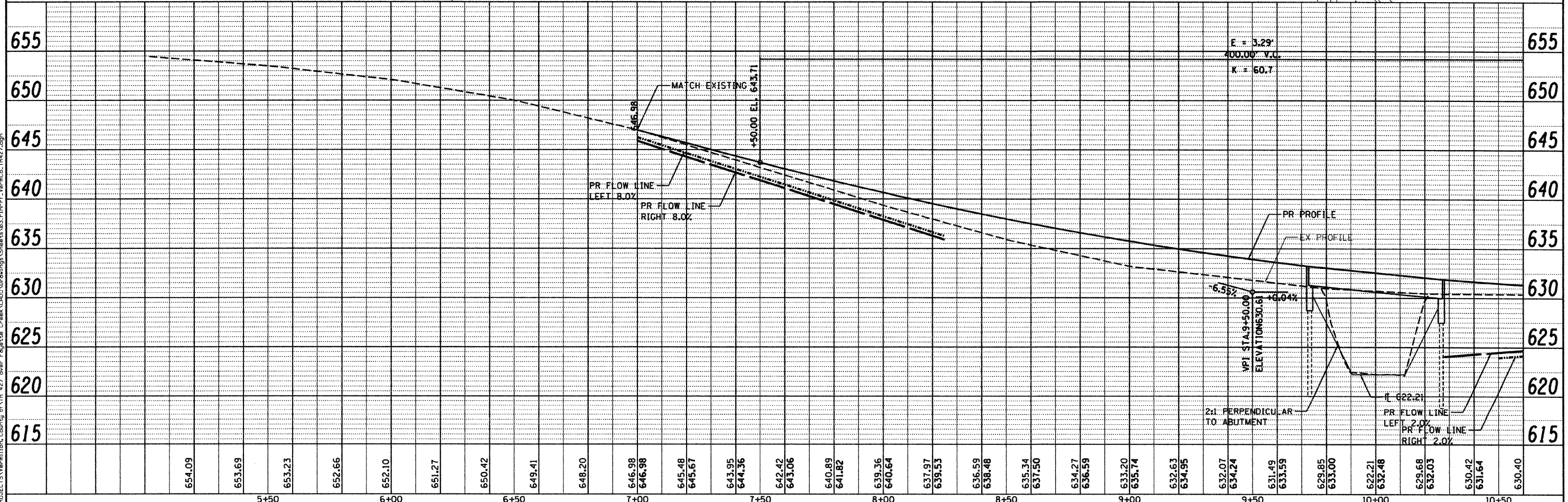
BM#1
NAIL IN WOOD POST
ELEV 652.56
STA 6+24.68, LT 22.49'

BM#2
" " IN CONCRETE DECK
OVER STEEL
ELEV 629.14
STA 9+81.59, LT 10.0'



PROFILE	SURVEYED	DATE
	PLOTTED	
	CHECKED	
	BY	
	NO. OF WAYS CHECKED	
	CADD FILE NAME	
	NO.	

PRINTED DATE: 12/7/2009
FILE NAME: N:\PROJECTS\VERMILION\County of Vtr 427 over Fayette Creek\Road\Drawings\Sheet\03.Dwg\Prf\1_VermCo_1R427.dwg



USER NAME = suser
DESIGNED - JEH
DRAWN - JEH
CHECKED - DF
DATE - 11-03-09

PLOT SCALE = 20.0000' / IN.
PLOT DATE = 12/7/2009

REVISIONS
REVISED -
REVISED -
REVISED -
REVISED -

STATE OF ILLINOIS
DEPARTMENT OF TRANSPORTATION

SCALE: 1"=20'
SHEET NO. 1 OF 2 SHEETS
STA. 7+00.0 TO STA. 10+60.0

F.A. RTE.	SECTION	COUNTY	TOTAL SHEETS	SHEET NO.
	01-03130-00-BR	VERMILION	17	3
CONTRACT NO. 91366			ILLINOIS FED. AID PROJECT	