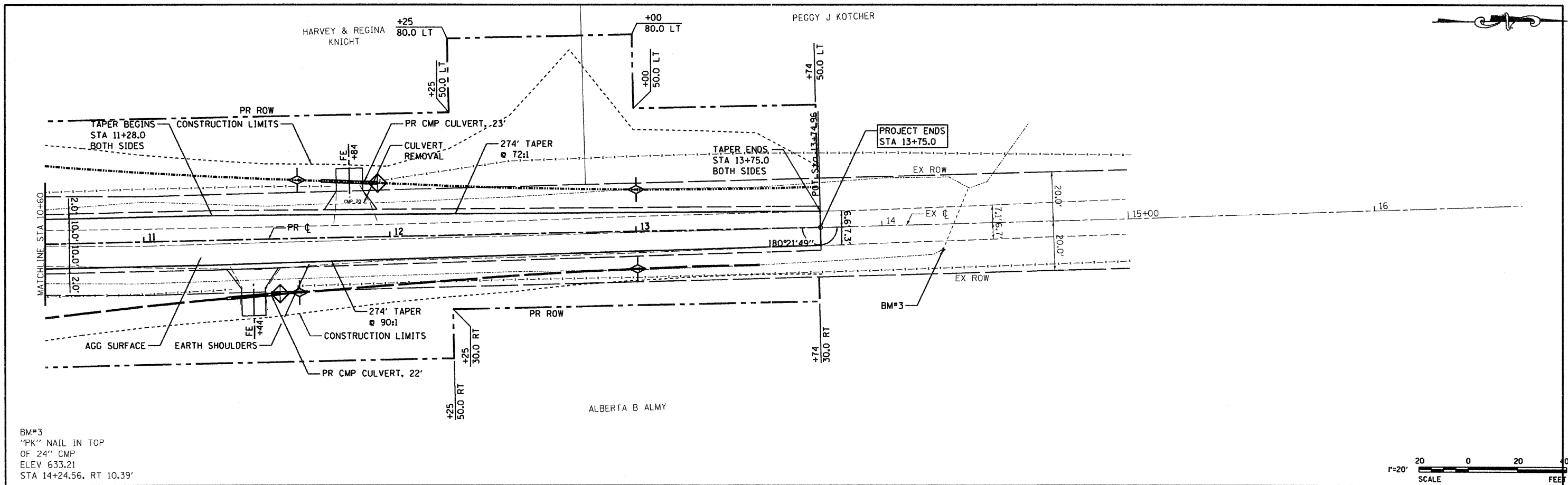


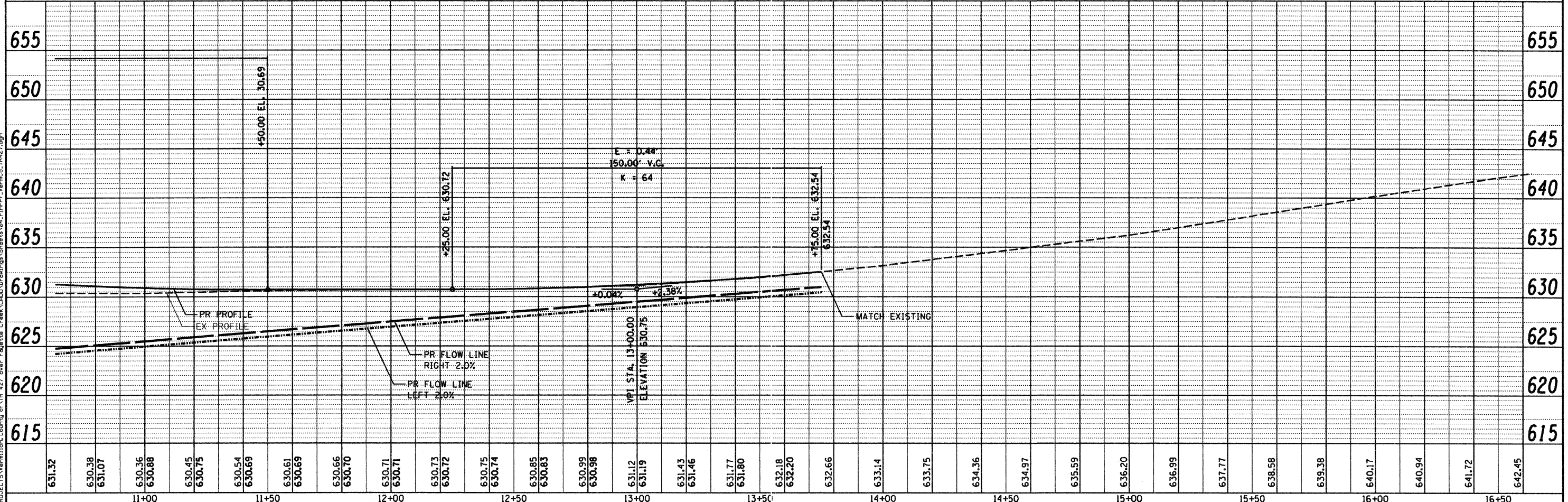
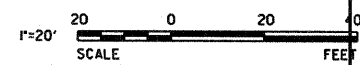
PLAN	SURVEYED	BY	DATE
	ALIGNED		
	NOTED		
	REVISIONS CHECKED		
	R.I. OF WAY CHECKED		
	CADD FILE NAME		
	NO.		

PROFILE	SURVEYED	BY	DATE
	PLOTTED		
	CHECKED		
	NOTED		
	STRUCTURE NOTATIONS OK'D		
	NO.		

PRINTED DATE: 12/7/2009  
 FILE NAME: N:\PROJECTS\Vermillion\County of Vtr 427 over Fayette Creek\CADD\Drawings\Sheets\04\_Plan\Prof\_VermCo\_IR427.dgn



BM#3  
 "PK" NAIL IN TOP  
 OF 24" CMP  
 ELEV 633.21  
 STA 14+24.56, RT 10.39'



631.32	630.38	631.07	630.36	630.88	630.45	630.75	630.54	630.69	630.61	630.69	630.66	630.70	630.71	630.71	630.73	630.72	630.75	630.74	630.85	630.83	630.99	630.98	631.12	631.19	631.43	631.46	631.77	631.80	632.18	632.20	632.66	633.14	633.75	634.36	634.97	635.59	636.20	636.99	637.77	638.58	639.38	640.17	640.94	641.72	642.45																																																																																						
										11+00											11+50											12+00											12+50											13+00											13+50											14+00											14+50											15+00											15+50											16+00											16+50

**ESI**  
 CONSULTANTS, LTD.  
 Eschscholtz, Sarnecki, Illigotti

DESIGNED	-	JEH	REVISED	-
DRAWN	-	JEH	REVISED	-
CHECKED	-	DF	REVISED	-
DATE	-	11-03-09	REVISED	-

STATE OF ILLINOIS  
 DEPARTMENT OF TRANSPORTATION

PLAN & PROFILE  
 SCALE: 1"=20'  
 SHEET NO. 2 OF 2 SHEETS  
 STA. 10+60.0 TO STA. 13+75.0

F.A.R.T.E.	SECTION	COUNTY	TOTAL SHEETS	SHEET NO.
	01-03130-00-BR	VERMILION	17	4
		CONTRACT NO.	91366	
ILLINOIS FED. AID PROJECT				