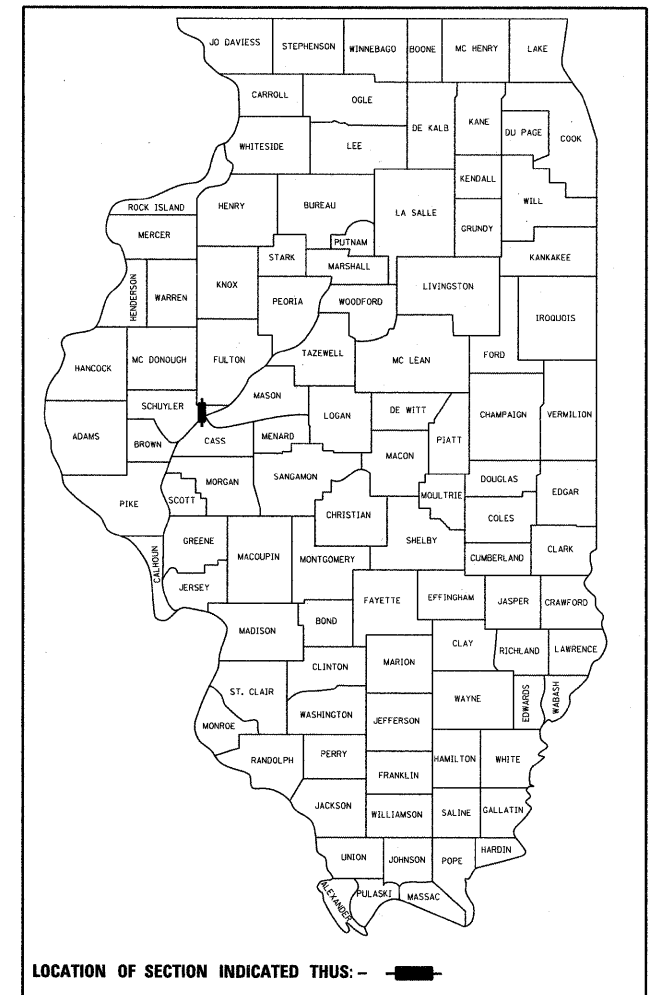


F.A.S. RTE.	SECTION	COUNTY	TOTAL SHEETS	SHEET NO.
454	04-00070-00-BR	SCHUYLER	30	1
FED. ROAD DIST. NO.	ILLINOIS	CONTRACT NO. 93499		

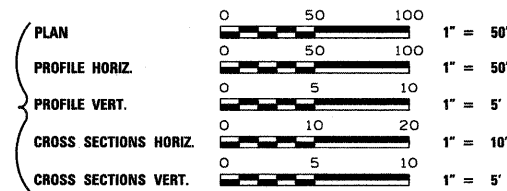
**STATE OF ILLINOIS
DEPARTMENT OF TRANSPORTATION
DIVISION OF HIGHWAYS**

**PLANS FOR
PROPOSED LOCAL AGENCY IMPROVEMENTS
HIGHWAY BRIDGE PROGRAM
AMERICAN RECOVERY & REINVESTMENT ACT**



SHEET NO.	DESCRIPTION
1	COVER SHEET
2	SUMMARY OF QUANTITIES & GENERAL NOTES
3	TYPICAL SECTIONS AND DETAILS
4	SCHEDULE OF QUANTITIES
5	PLAN AND PROFILE
6	EROSION CONTROL & REMOVAL AND ADJUSTMENT PLAN
7 - 8	RIGHT OF WAY PLAN
9 - 25	BRIDGE PLANS
26 - 30	CROSS SECTIONS

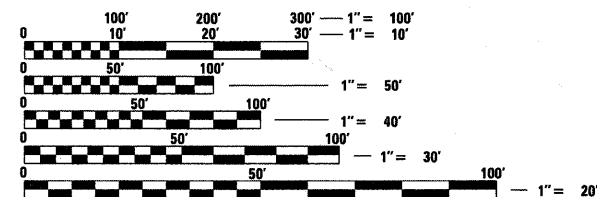
STANDARDS	
000001-05	STANDARD SYMBOLS, ABBREVIATIONS AND PATTERNS
515001-03	NAME PLATE FOR BRIDGES
280001-05	TEMPORARY EROSION CONTROL SYSTEMS
601101-01	CONCRETE HEADWALLS FOR PIPE DRAIN
630301-05	SHOULDER WIDENING FOR TYPE 1 (SPECIAL) GUARDRAIL TERMINALS
635006-03	REFLECTOR AND TERMINAL MARKER PLACEMENT
666001-01	RIGHT OF WAY MARKERS
701901-01	TRAFFIC CONTROL DEVICES
B.L.R. 21-8	TYPICAL APPLICATION OF TRAFFIC CONTROL DEVICES FOR CONSTRUCTION ON RURAL LOCAL HIGHWAYS
B.L.R. 26-2	STEEL PLATE BEAM GUARDRAIL 27 1/2" HEIGHT
B.L.R. 27-1	TRAFFIC BARRIER TERMINAL TYPE 5A



**CH 8 / FAS ROUTE 454
SECTION 04-00070-00-BR
SCHUYLER COUNTY
PROJECT BRS-ARA-0454(104)
JOB NUMBER C-96-202-10**

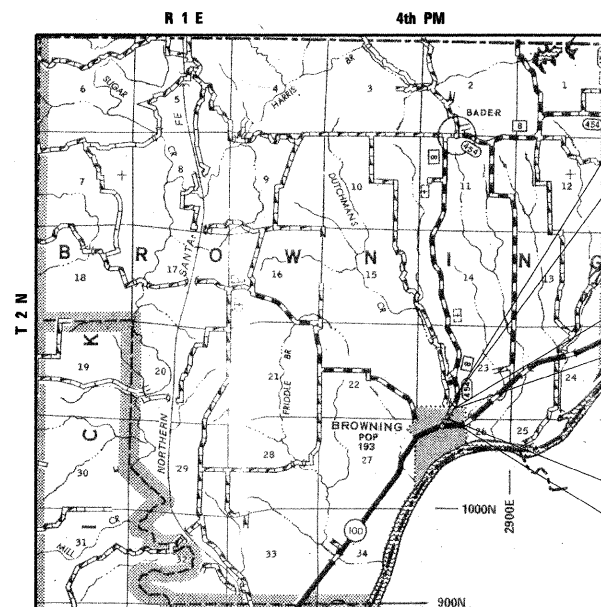
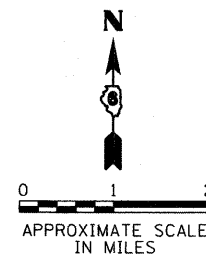
UTILITIES

AMEREN CIPS
AT&T
SPOON RIVER ELECTRIC COOPERATIVE
VILLAGE OF BROWNING



FULL SIZE PLANS HAVE BEEN PREPARED USING STANDARD ENGINEERING SCALES. REDUCED SIZED PLANS WILL NOT CONFORM TO STANDARD SCALES. IN MAKING MEASUREMENTS ON REDUCED PLANS, THE ABOVE SCALES MAY BE USED.

J.U.L.I.E.
JOINT UTILITY LOCATION INFORMATION FOR EXCAVATION
1-800-892-0123
OR 811



LOCATION MAP

NET LENGTH OF PROJECT = 540.00 FEET = 0.178 MILES

DESIGN DESIGNATION

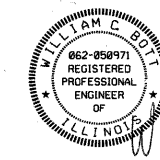
MINOR COLLECTOR: ADT = 650
DESIGN SPEED: 40 MPH

STA. 9+40.00
END IMPROVEMENTS
SECTION 04-00070-00-BR

EXISTING STRUCTURE
SN 085-3081
TWO SPAN REINFORCED CONCRETE DECK W/STEEL WF BEAMS ON CLOSED TIMBER ABUTMENTS AND A TIMBER PILE BENT PIER (62'-0" LENGTH X 23'-0" WIDE) TO BE REMOVED.

PROPOSED STRUCTURE
SN 085-3055
SINGLE SPAN CONCRETE DECK ON ROLLED I-BEAMS ON REINFORCED CONCRETE INTEGRAL ABUTMENTS (82'-0" LENGTH X 30'-0" WIDE).

STA. 0+00.00
BEGIN IMPROVEMENTS
SECTION 04-00070-00-BR



William C. Bost
09/11/09

EXPIRES: 11/30/09

APPROVED	<i>September 11</i> 20 <i>09</i>
	<i>David J. DeWald</i> COUNTY ENGINEER
PASSED	<i>October 14</i> 20 <i>09</i>
	<i>Terrance H. Fountain</i> <i>KS</i> DISTRICT SIX ENGINEER OF LOCAL ROADS & STREETS
PASSED	<i>October 13</i> 20 <i>09</i>
	<i>Ron Chubb</i> DISTRICT SIX ENGINEER OF CONSTRUCTION
Releasing For Bid Based on Limited Review	<i>October 14</i> 20 <i>09</i>
	<i>Roger J. Driskell</i> <i>KS</i> DEPT. DIRECTOR OF HIGHWAYS, REGION FOUR ENGINEER
	STATE OF ILLINOIS DEPARTMENT OF TRANSPORTATION

**PRINTED BY THE AUTHORITY
OF THE STATE OF ILLINOIS**

PLOT DATE = 9/11/2009 10:28:02 AM
FILE NAME = J:\07258\CADD\CAD\shets\07258-sht-cover.dgn
PLOT SCALE = 50.0000 / 1"
PLOT DRIVER = VBI105700.PS_LOCAL.plt
OPERATOR = msh



CONTRACT NO. 93499

S&B PROJECT: 07258

COMPUTER FILE NO. 07258-sht-cover.dgn PROJECT 07258
9/11/09 - MDS