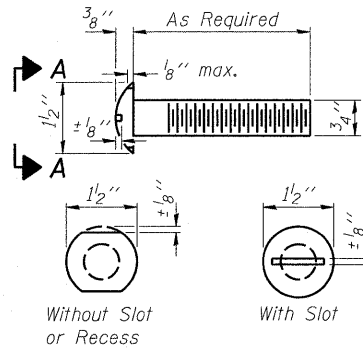
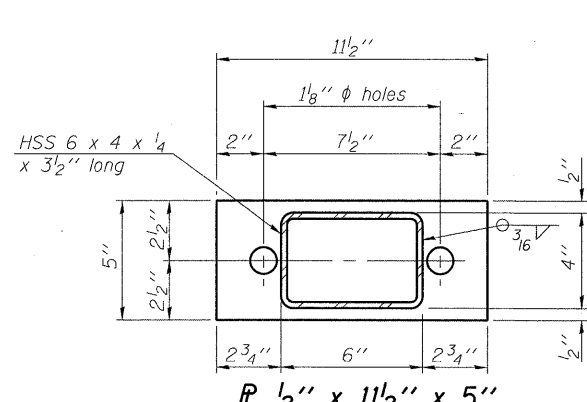


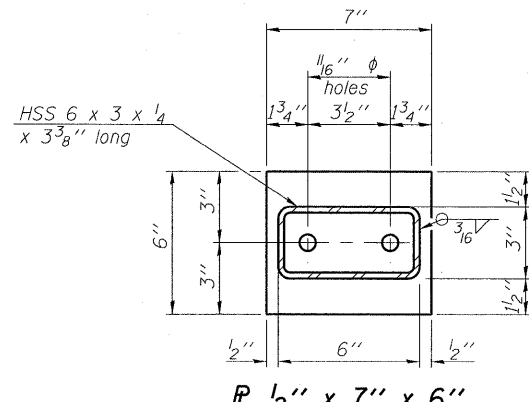
STATE OF ILLINOIS
DEPARTMENT OF TRANSPORTATION



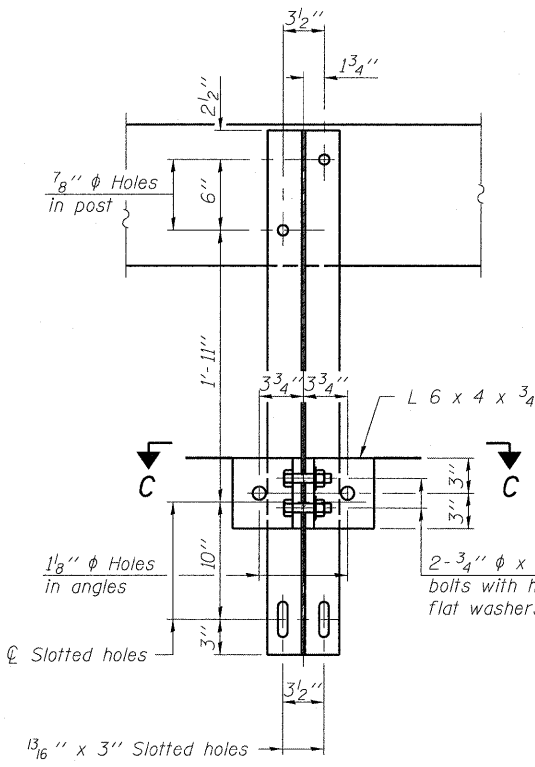
VIEW A-A
ROUND HEAD BOLT



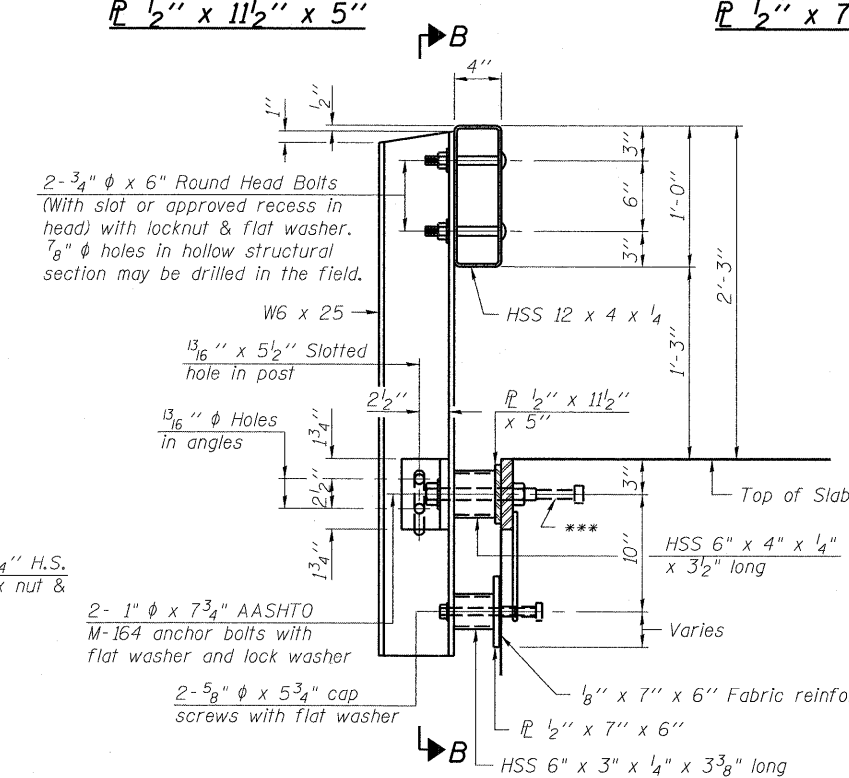
SECTION B-B
R 1/2" x 11 1/2" x 5"



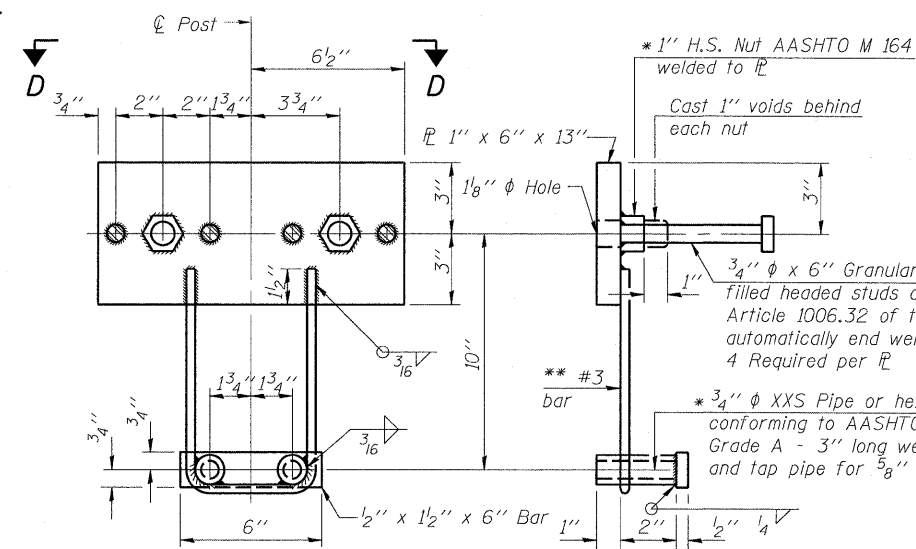
SECTION AT RAILING POST
R 1/2" x 7" x 6"



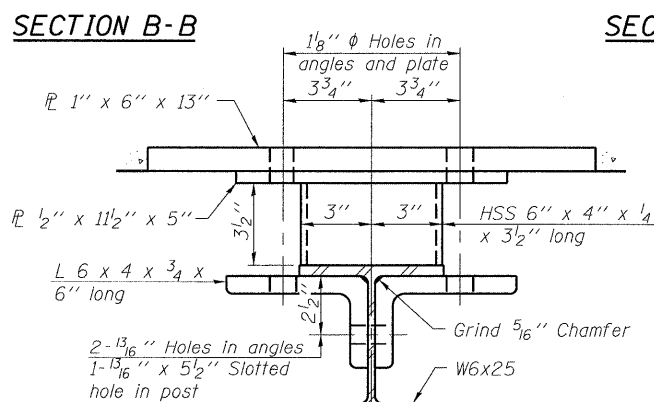
SECTION C-C



SECTION AT RAILING POST

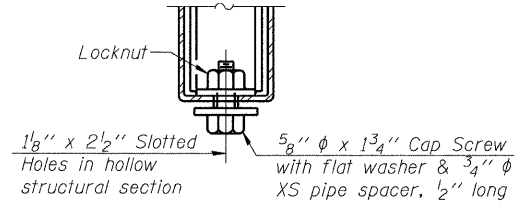


ANCHOR DEVICE

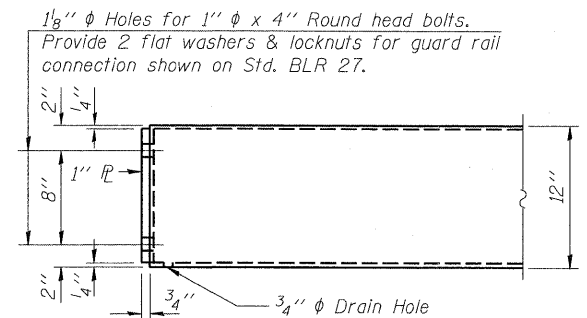


SECTION C-C

** Whenever the lower insert assemblies interfere with strand locations, the #3 bars shall be cut and adjusted in order to allow raising or lowering of the lower inserts. Maximum adjustment not to exceed 1/2".

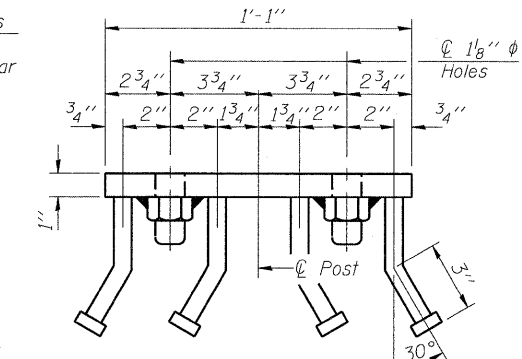


RAIL SPLICE CONNECTION
AT EXPANSION JT.



END OF RAIL DETAILS

Notes:
All field drilled holes shall be coated with an approved zinc rich paint before erection.
For multi-span bridges, sufficient 1/4" x 6" x 1'-2" galvanized steel shims shall be provided to align rail between adjacent spans. Cost included with Steel Railing, Type S-1.
All steel rail elements shall be galvanized according to Article 509.05 of the Standard Specifications.
*** The studs of the anchor devices shall be placed below the top reinforcement bars and the outermost longitudinal reinforcement bar shall be placed directly above the studs of the rail post anchor device.



VIEW D-D

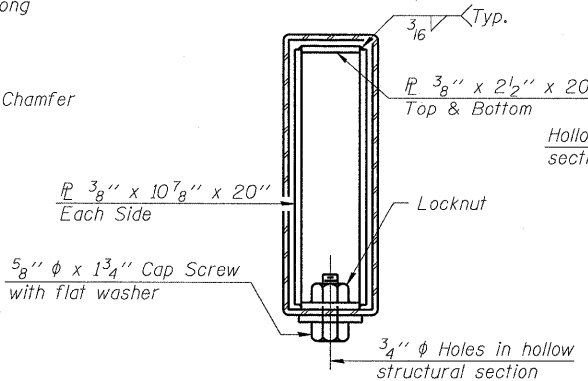
BILL OF MATERIAL

Item	Unit	Quantity
Steel Railing, Type S-1	Foot	164

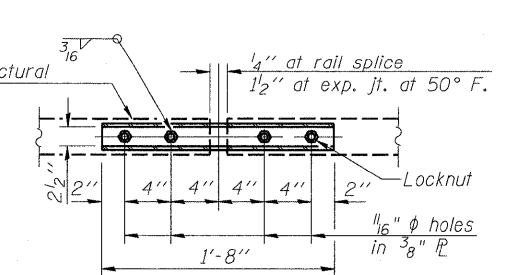
STEEL RAILING, TYPE S-1
F.A.S. ROUTE 454
SECTION 04-0070-00-BR
SCHUYLER COUNTY
STATION 4+79.00
S.N. 085-3055

GREENE & BRADFORD, INC.
OF SPRINGFIELD
CONSULTING ENGINEERS
INCORPORATED
SPRINGFIELD, ILLINOIS 62701
PROFESSIONAL ENGINEERS
REGISTERED IN ILLINOIS
0217-793-8844, 0217-793-5257 (FAX) E-MAIL: G&B@GREENEANDBRADFORD.COM

DESIGNED NIEWINSKI
CHECKED TRELLO
DRAWN VERENSKI
CHECKED TRELLO



SECTIONS AT RAIL SPLICE



PLAN-BOTT. SPLICE R
TYPICAL

SHEET NO. 7 17 SHEETS	F.A.S. RTE.	SECTION	COUNTY	TOTAL SHEETS	SHEET NO.
	454	04-0070-00-BR	SCHUYLER	30	15
FED. ROAD DIST. NO. -			ILLINOIS	FED. AID PROJECT	
				CONTRACT NO. 93499	