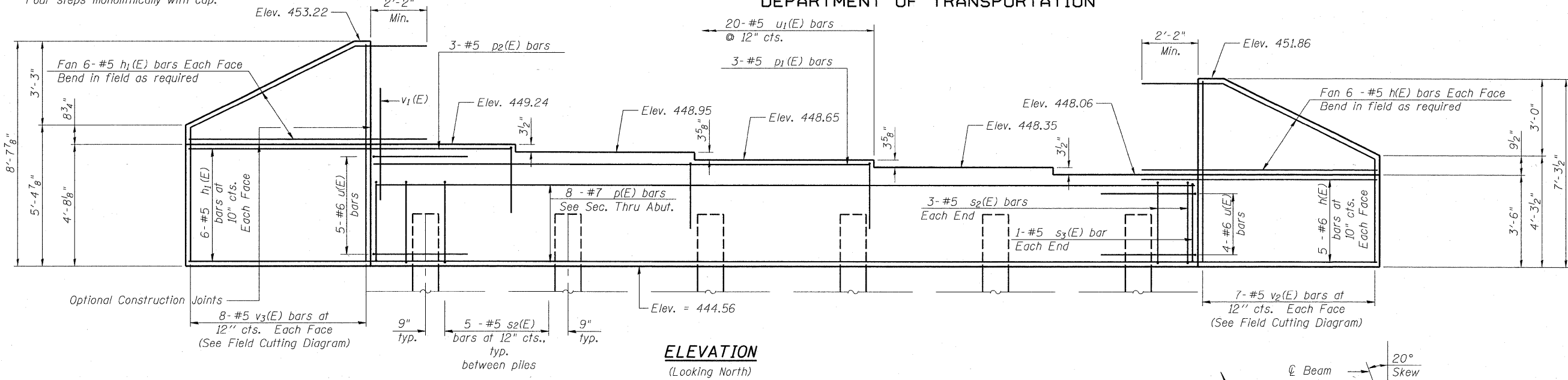
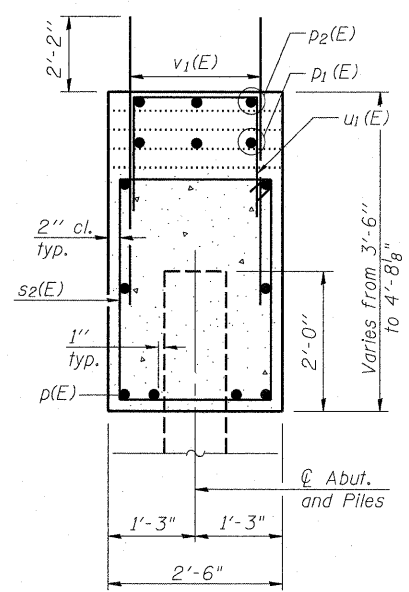


STATE OF ILLINOIS  
DEPARTMENT OF TRANSPORTATION

Notes:  
Four steps monolithically with cap.



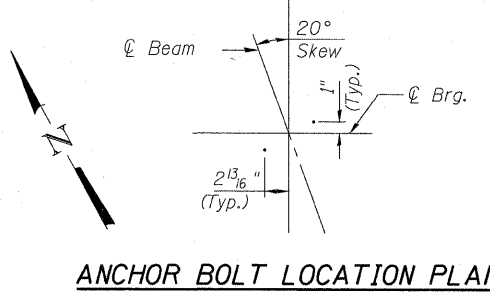
**ELEVATION**  
(Looking North)



**SEC. THRU ABUT.**  
**BILL OF MATERIAL**

Bar	No.	Size	Length	Shape
h(E)	22	#5	9'-2"	—
h1(E)	24	#5	9'-8"	—
p(E)	8	#7	31'-7"	—
p1(E)	3	#5	19'-0"	—
p2(E)	3	#5	4'-9"	—
s2(E)	31	#5	11'-5"	□
s3(E)	2	#5	11'-9"	□
u(E)	9	#6	10'-2"	┌
u1(E)	20	#5	7'-2"	┌
v1(E)	63	#5	4'-4"	—
v2(E)	7	#5	10'-10"	—
v3(E)	8	#5	13'-5"	—
Structure Excavation			Cu. Yd.	59
Concrete Structures			Cu. Yd.	15.6
Reinforcement Bars, Epoxy Coated			Pound	2,200
Furnishing - Metal Shell Piles, 12" φ x 0.25"			Foot	210
Driving Piles			Foot	210

For details of piles see sheet 13 of 17.



**ANCHOR BOLT LOCATION PLAN**

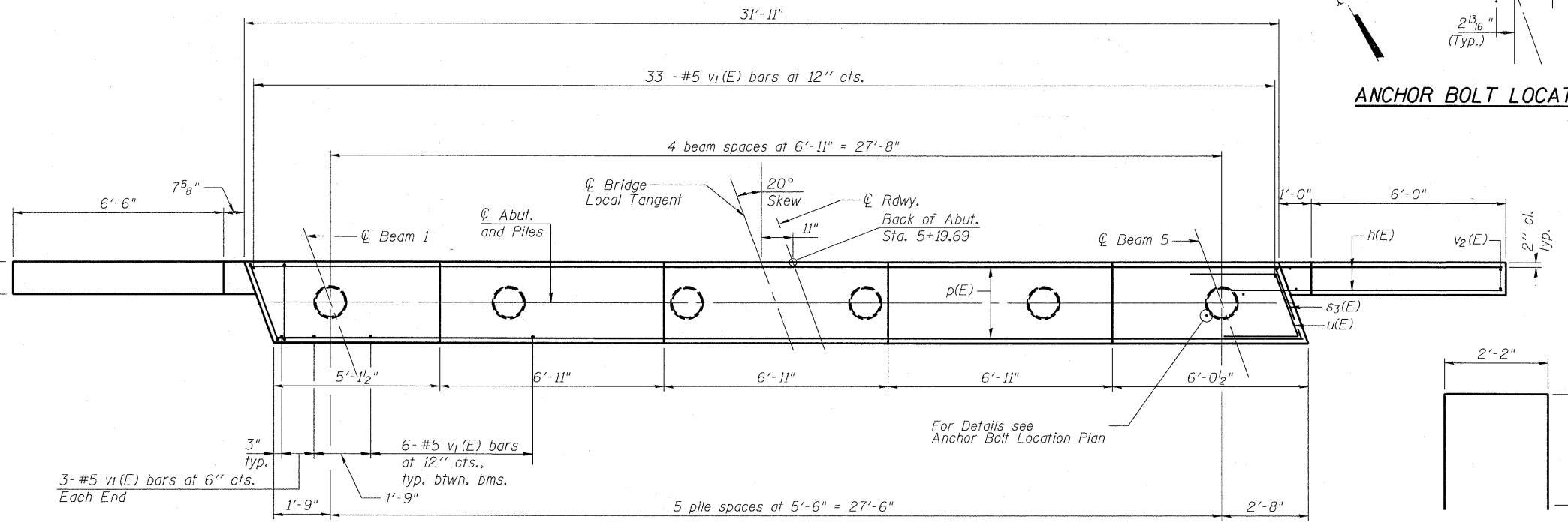
**PILE DATA**

Type: Metal Shell - 12" Dia. x 0.25" wall  
Nominal Required Bearing: 334 Kips  
Factored Resistance Available: 167 Kips  
Est. Length: 35'  
No. Production Piles: 6  
No. Test Piles: 0

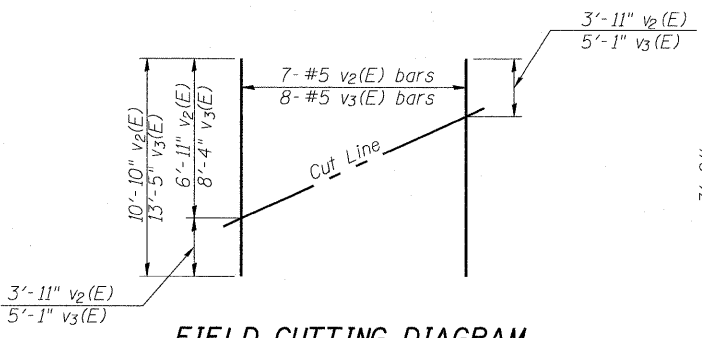


DESIGNED	NI EWINSKI
CHECKED	TRELLO
DRAWN	VERENSKI
CHECKED	TRELLO

C&B PROJECT: PLOT DRIVER: V8: TDS798\_PS\_LOCAL\_ID0T.pltcf  
FILE NAME: J:\07258\CADD\CAD\sheet\SN 085-3055\0853055-07258-Sht-NAbutment.dgn  
PLOT DATE: 9/18/2009 PLOT SCALE: 2:2 1/4" = 1' USER NAME: Franky

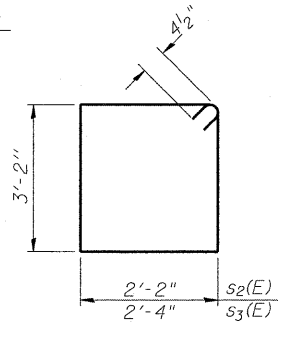


**PLAN**

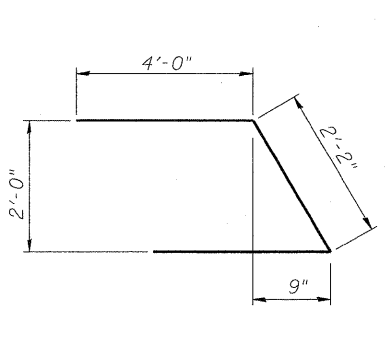


**FIELD CUTTING DIAGRAM**

Order v2(E) and v3(E) full length. Cut as shown and use remainder of bars in opposite face.



**BARS s2(E) & s3(E)**



**BAR u(E)**

**BAR u1(E)**

**NORTH ABUTMENT**  
**F.A.S. ROUTE 454**  
**SECTION 04-0070-00-BR**  
**SCHUYLER COUNTY**  
**STATION 4+79.00**  
**S.N. 085-3055**

SHEET NO. 9 17 SHEETS	F.A.S. RTE.	SECTION	COUNTY	TOTAL SHEETS	SHEET NO.
	454	04-0070-00-BR	SCHUYLER	30	17
CONTRACT NO. 93499					
FED. ROAD DIST. NO. ILLINOIS FED. AID PROJECT					

AI-L

10-1-08