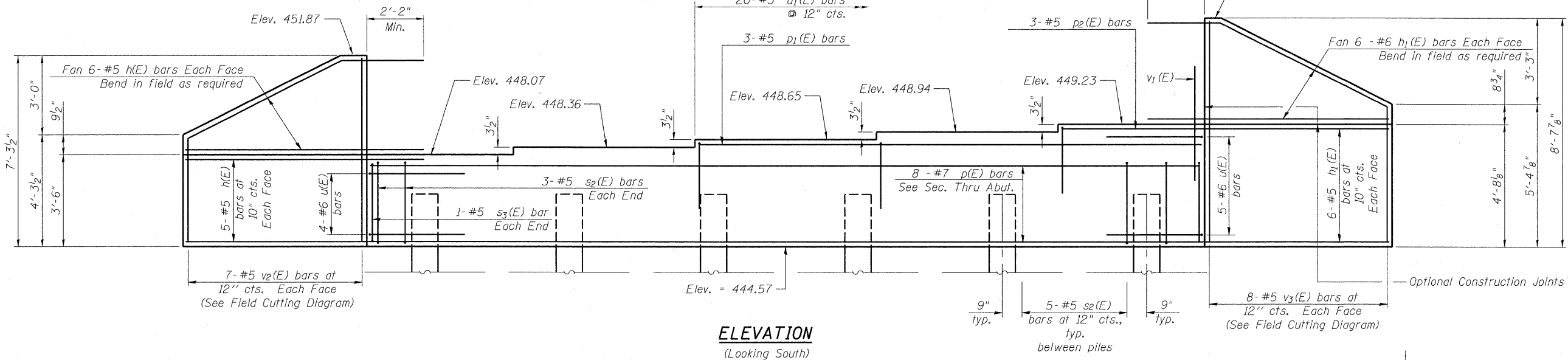
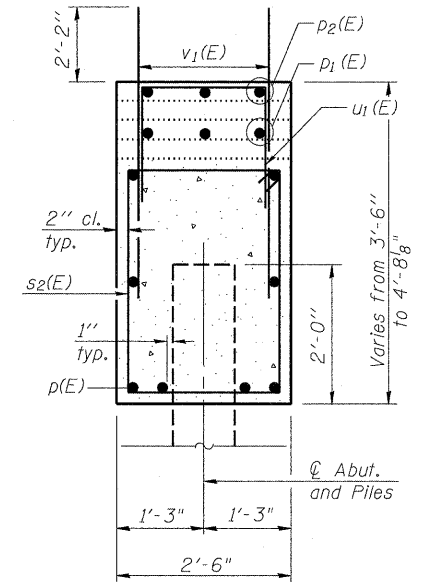


STATE OF ILLINOIS
DEPARTMENT OF TRANSPORTATION

Notes:
Pour steps monolithically with cap.



ELEVATION
(Looking South)



SEC. THRU ABUT.
BILL OF MATERIAL

Bar	No.	Size	Length	Shape
h(E)	22	#5	9'-2"	—
h1(E)	24	#5	9'-8"	—
p(E)	8	#7	31'-7"	—
p1(E)	3	#5	19'-0"	—
p2(E)	3	#5	4'-9"	—
s2(E)	31	#5	11'-5"	□
s3(E)	2	#5	11'-9"	□
u(E)	9	#6	10'-2"	┌
u1(E)	20	#5	7'-2"	┌
v1(E)	63	#5	4'-4"	—
v2(E)	7	#5	10'-10"	—
v3(E)	8	#5	13'-5"	—
Structure Excavation			Cu. Yd.	59
Concrete Structures			Cu. Yd.	15.6
Reinforcement Bars, Epoxy Coated			Pound	2,200
Furnishing - Metal Shell Piles, 12" ϕ x 0.25"			Foot	200
Driving Piles			Foot	200
Test Pile, Metal Shells			Each	1

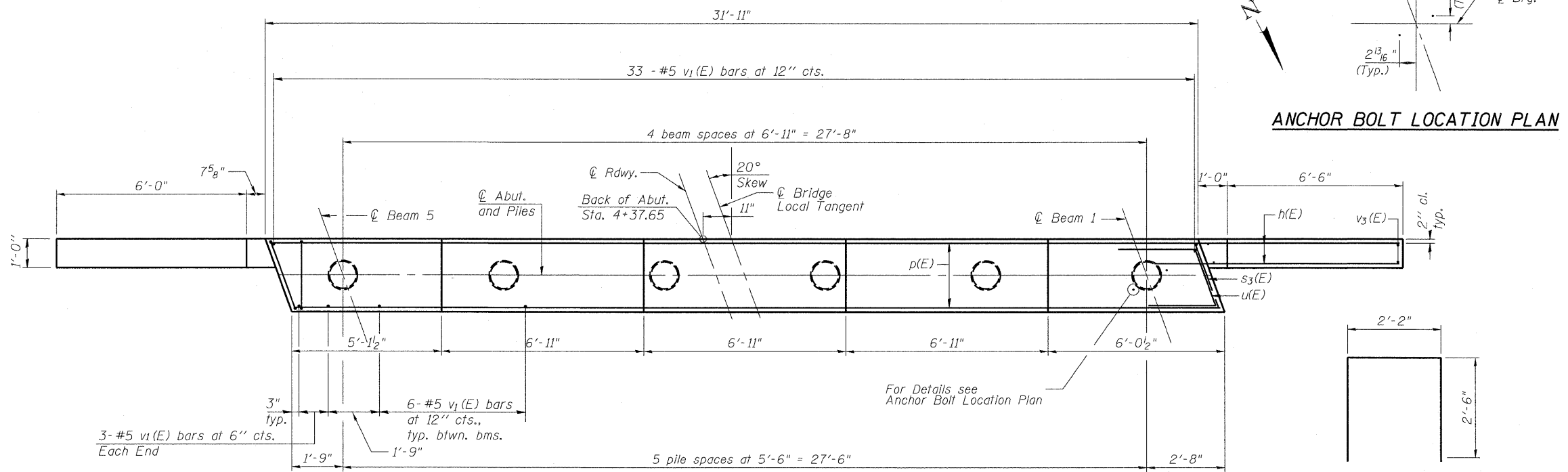
For details of piles see sheet 13 of 17.

PILE DATA

Type: Metal Shell - 12" Dia. x 0.25" wall
Nominal Required Bearing: 321 Kips
Factored Resistance Available: 161 Kips
Est. Length: 40'
No. Production Piles: 5
No. Test Piles: 1

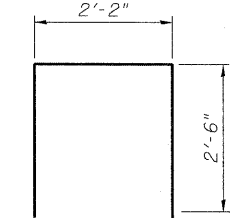
GREENE & BRADFORD, INC.
OF SPRINGFIELD
CONSULTING ENGINEERS
3000 CENTRAL AVENUE
SPRINGFIELD, ILLINOIS 62761-1001
PROFESSIONAL ENGINEERS
REGISTERED PROFESSIONAL ENGINEERING CORPORATION
0671783-6944, 0201751-6237, F.I.E.M.A., 00000000000000000000

DESIGNED	NIEWINSKI
CHECKED	TRELLO
DRAWN	VERENSKI
CHECKED	TRELLO

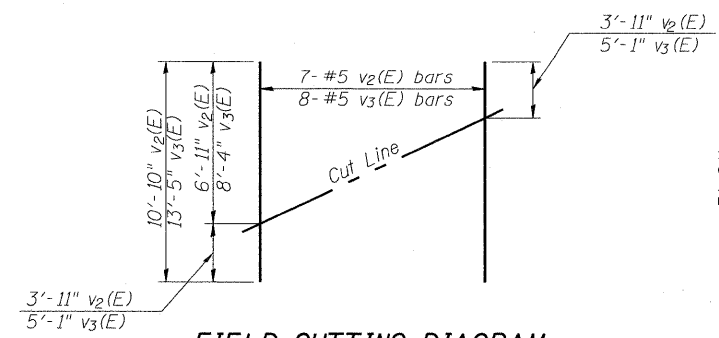


PLAN

ANCHOR BOLT LOCATION PLAN

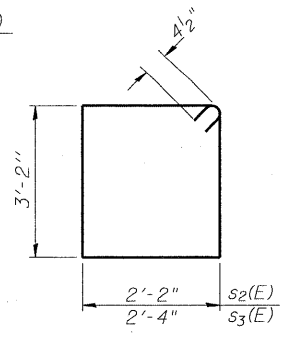


BAR u1(E)

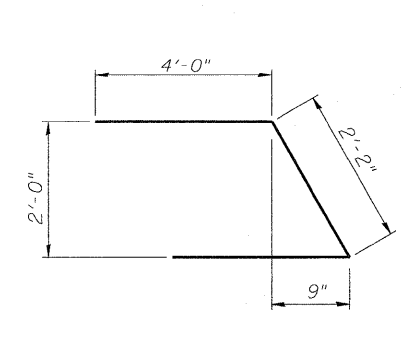


FIELD CUTTING DIAGRAM

Order v2(E) and v3(E) full length. Cut as shown and use remainder of bars in opposite face.



BARS s2(E) & s3(E)



BAR u(E)

AI-L

10-1-08

SHEET NO. 10 17 SHEETS	F.A.S. RTE.	SECTION	COUNTY	TOTAL SHEETS	SHEET NO.
	454	04-0070-00-BR	SCHUYLER	30	18
FED. ROAD DIST. NO. - ILLINOIS			FED. AID PROJECT		
			CONTRACT NO. 93499		

SOUTH ABUTMENT
F.A.S. ROUTE 454
SECTION 04-0070-00-BR
SCHUYLER COUNTY
STATION 4+79.00
S.N. 085-3055