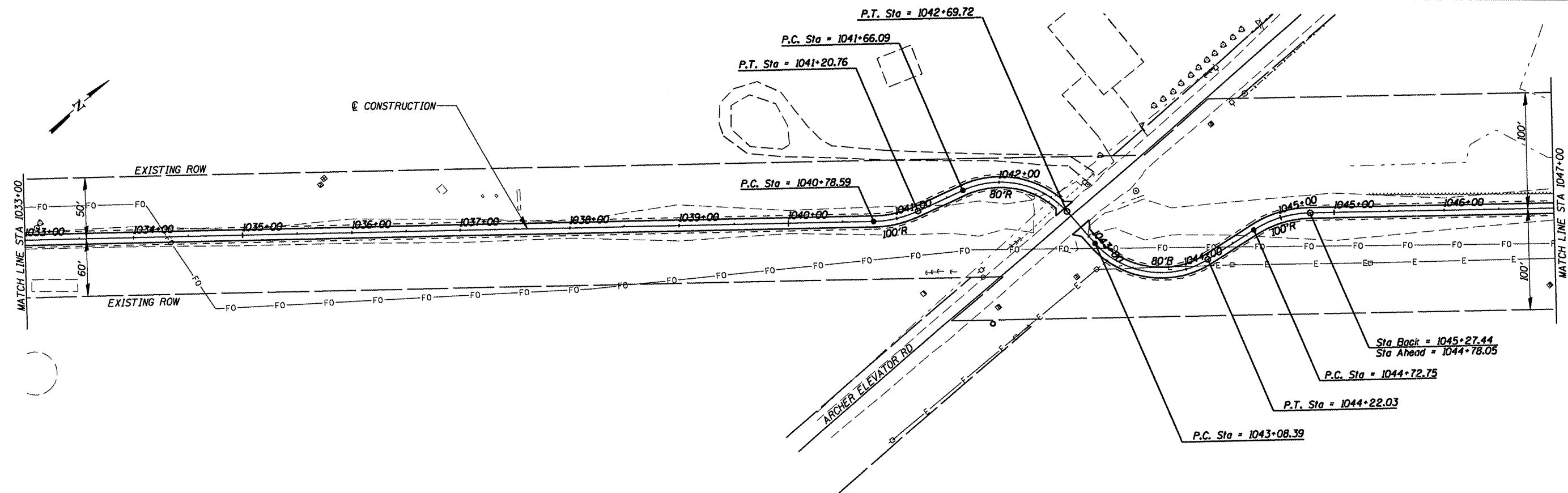


DATE	
BY	
REVISIONS	
PLANNED	
CHECKED	
NO. 1	
NO. 2	
NO. 3	
NO. 4	
NO. 5	
NO. 6	
NO. 7	
NO. 8	
NO. 9	
NO. 10	

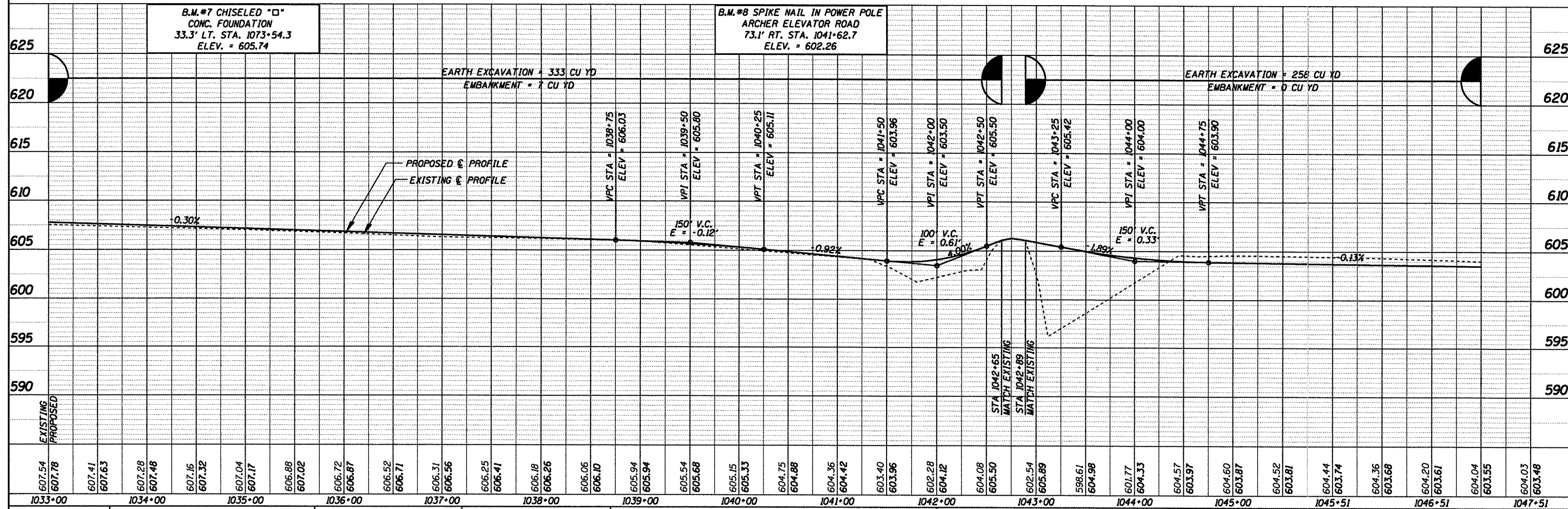


SEC 2, T15N, R6W, 3RD PM

PAVING OMISSION
STA 1042+66.10 TO STA 1042+88.91 (ARCHER ELEVATOR RD)

SEE SHEET 60 FOR
INTERSECTION DETAILS

DATE	
BY	
REVISIONS	
PLANNED	
CHECKED	
NO. 1	
NO. 2	
NO. 3	
NO. 4	
NO. 5	
NO. 6	
NO. 7	
NO. 8	
NO. 9	
NO. 10	



CUMMINS
ENGINEERING
CORPORATION

JOB = 2192
FILE NAME = p&pl0235.dgn
PLDT SCALE = 1/8" = 100.000' / IN.
PLOT DATE = 6/5/2009

DESIGNED - NAK	REVISED -
DRAWN - AJH	REVISED -
CHECKED - NAK	REVISED -
DATE - 1/22/2009	REVISED -

SANGAMON VALLEY TRAIL

PLAN & PROFILE

SCALE: SHEET NO. OF SHEETS STA. 1033+00 TO STA. 1047+00

F.A.S. RTE.	SECTION	COUNTY	TOTAL SHEETS	SHEET NO.
	05-00173-00-BT	SANGAMON	173	28
CONTRACT NO.				
FED. ROAD DIST. NO. ILLINOIS FED. AID PROJECT				

93522