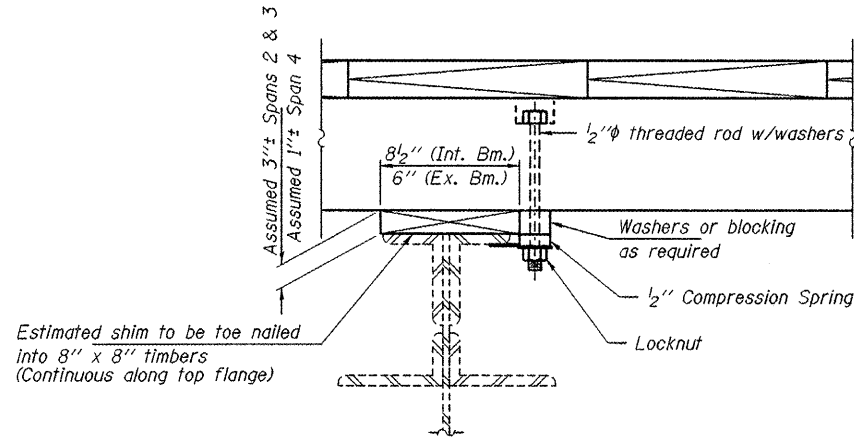
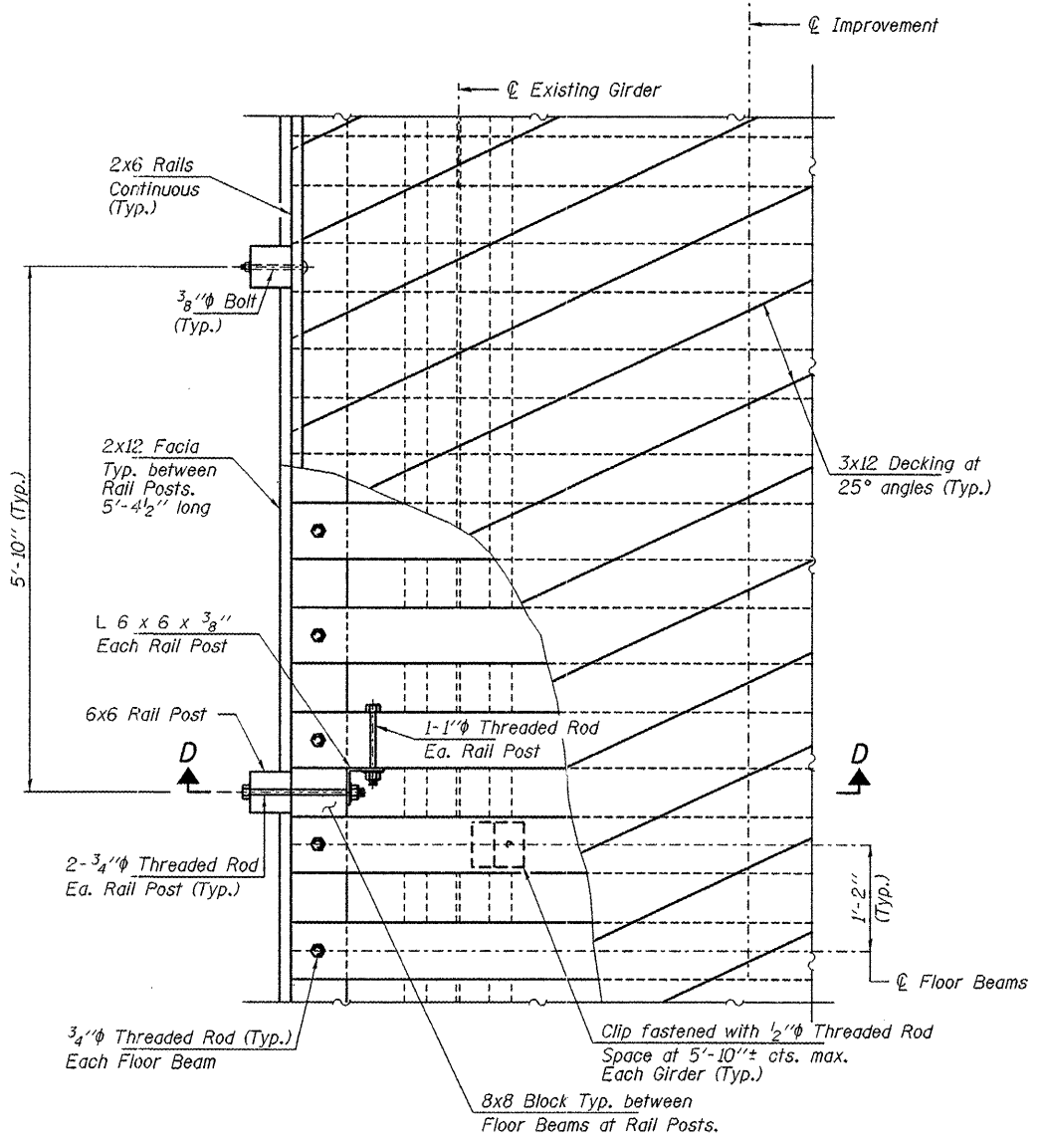


**SECTION D-D**

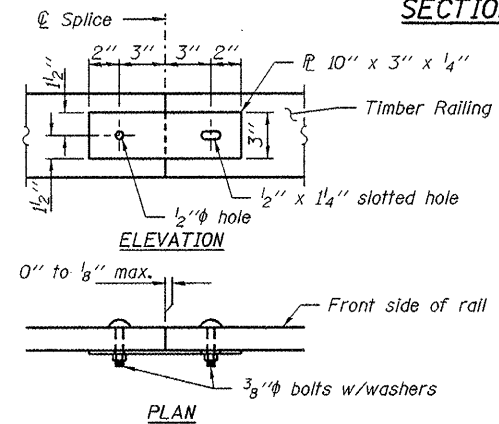


**SHIM DETAIL**

Note: Shim thickness provided as needed to meet proposed profile grade.



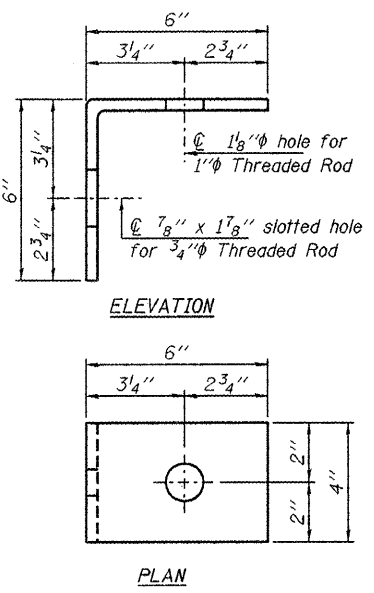
**DECK DETAIL PLAN**



**RAIL SPLICE DETAIL**  
(Typ.)

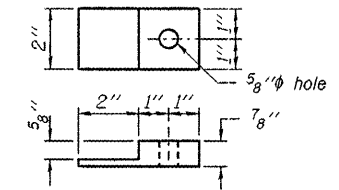
Note: Minimize splices in rails and top plate. Where possible span 3 rails posts, as per suggested panel spacing.

DESIGNED - S.M.S.
CHECKED - S.W.M.
DRAWN - D.A.B.
CHECKED - S.M.S.



**ANGLE DETAIL**

Note: Weight of Angles and Flange Clips included for payment as Hardware.



**FLANGE CLIP DETAIL**

(5'-10" cts. max spacing)  
Alternate flange clip allowed by approval of Engineer.

**DECK & RAILING DETAILS  
SPANS 2 THRU 4  
SVT BRIDGE NO. 14  
STRUCTURE NO 084-8014**

<b>HAMPTON, LENZINI &amp; RENWICK, INC.</b> CIVIL & STRUCTURAL ENGINEERS LAND SURVEYORS 3085 STEVENSON DRIVE, SUITE 201 SPRINGFIELD, ILLINOIS 62703 (217) 546-3400 PROJECT NUMBER: 12-R4-0090    DATE: 05/28/09	SHEET NO. 10	T.R.	SECTION	COUNTY	TOTAL SHEETS	SHEET NO.
	13 SHEETS		05-00713-00-BT	SANGAMON	173	103
			S.V.T. OVER SPRING CREEK	CONTRACT NO.		
			FED. ROAD DIST. NO.	ILLINOIS	FED. AID PROJECT	93522