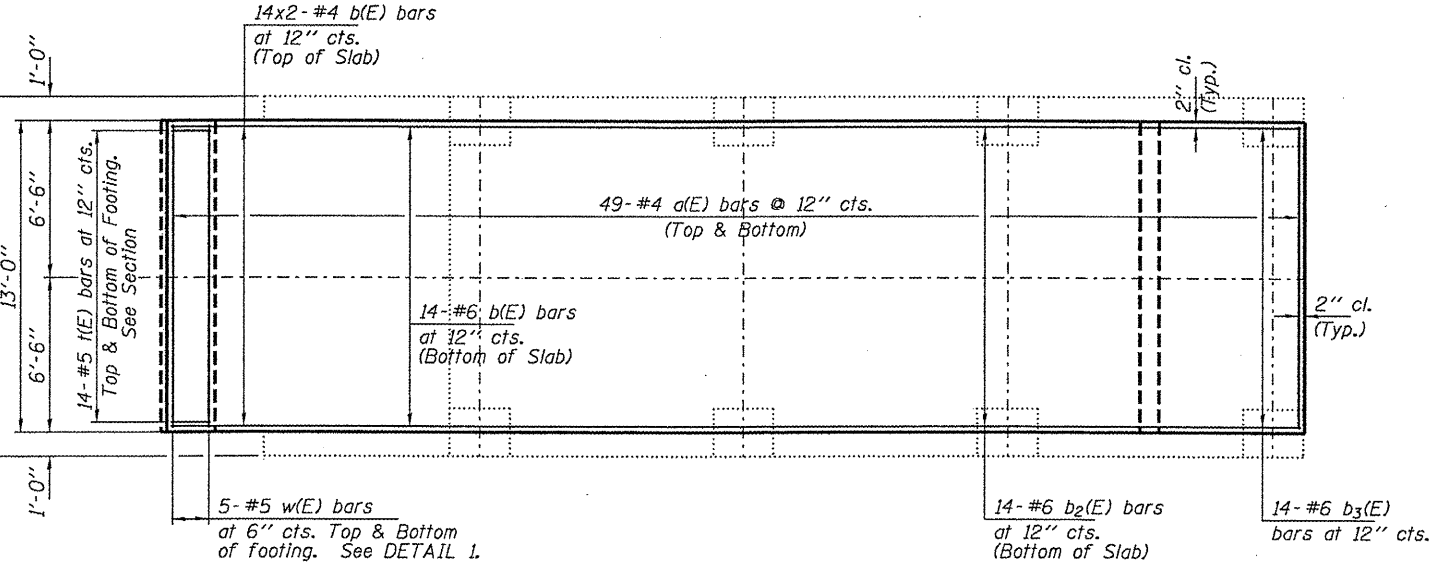
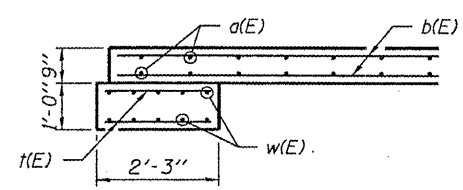


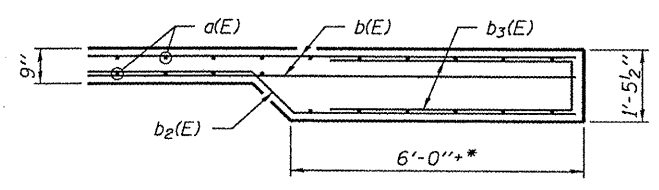
ELEVATION



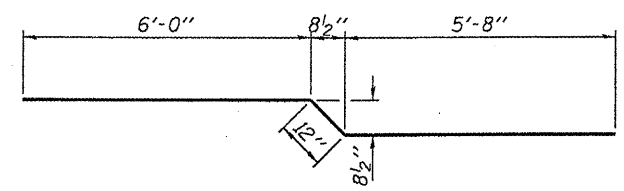
PLAN



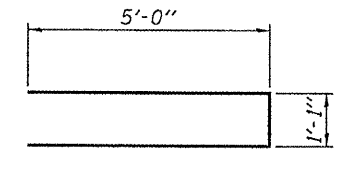
DETAIL 1



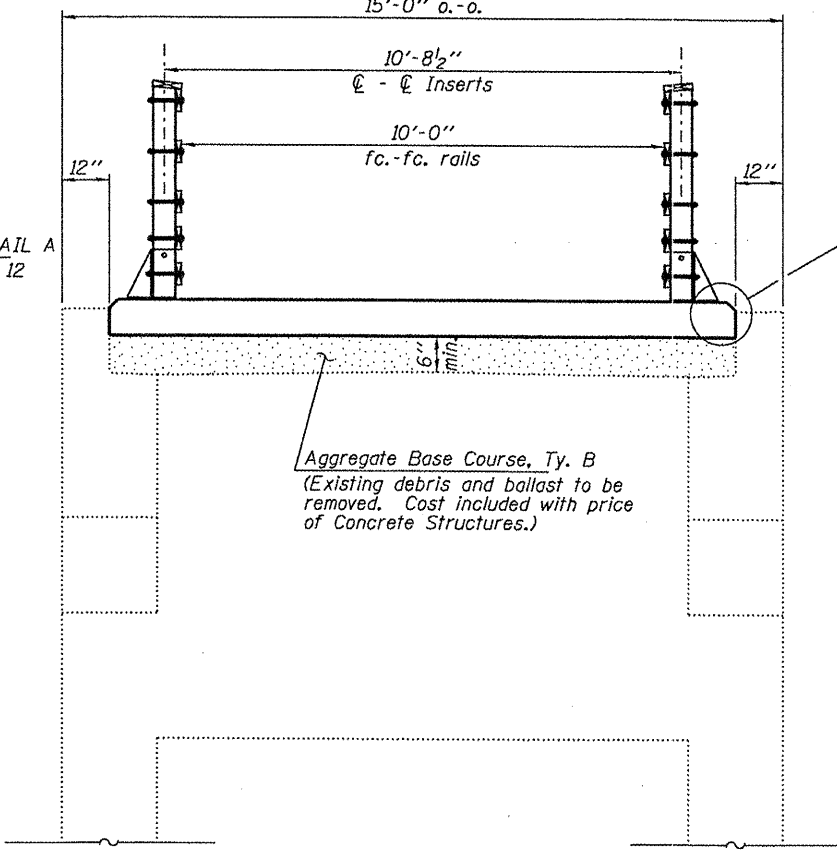
DETAIL 2



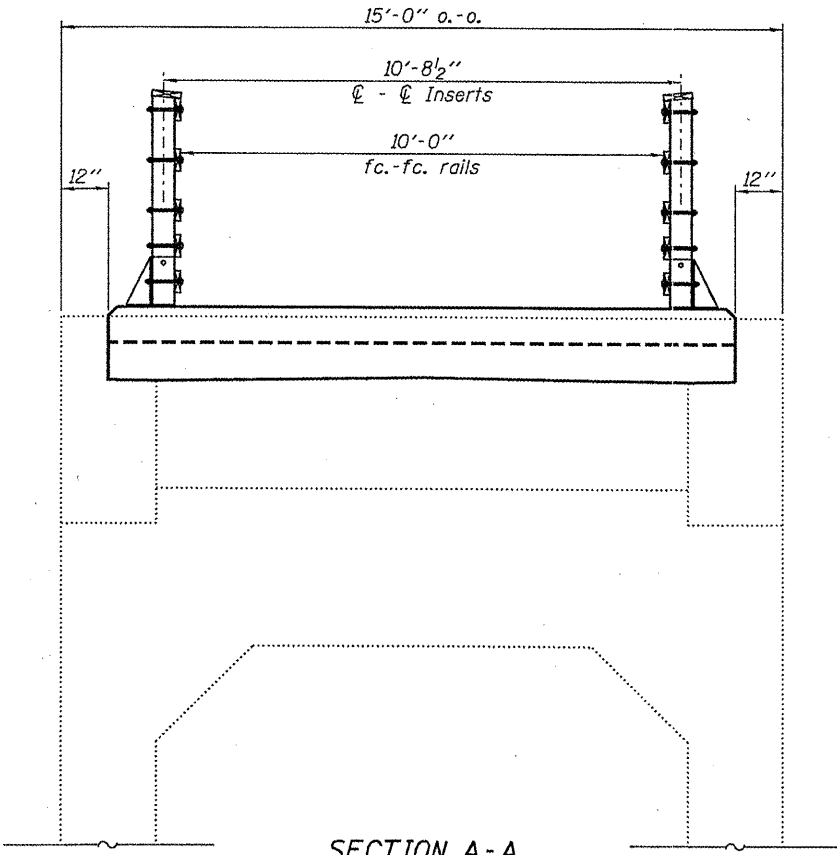
BAR b₂(E)



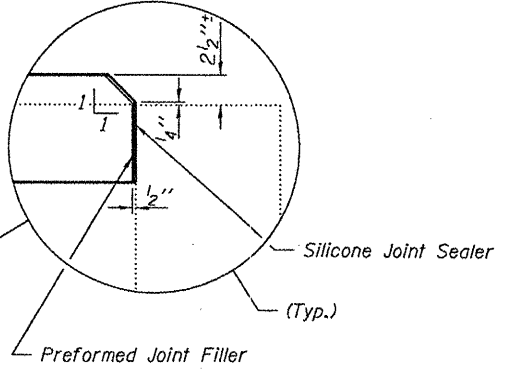
BAR b₃(E)



SECTION B-B



SECTION A-A



Notes:
 Bars indicated thus 14x2-#4 ect. indicates 14 lines of bars with 2 lengths per line.
 The footing maximum applied service bearing pressure (Q_{max}) = 2.0 ksf.
 Cost of excavation for footing, slab, and aggregate base included with Concrete Superstructures.
 Placement and finishing shall be in accordance with Article 42.3.06 of Standard Specifications.

BILL OF MATERIAL - S. ABUT. DECK

BAR	NO.	SIZE	LENGTH	SHAPE
a(E)	98	#4	12'-8"	—
b(E)	28	#4	24'-4"	—
b ₁ (E)	14	#6	37'-3"	—
b ₂ (E)	14	#6	12'-8"	—
b ₃ (E)	14	#6	11'-1"	—
f(E)	28	#5	1'-11"	—
w(E)	10	#5	12'-8"	—
Aggregate Base Course, Ty. B				
			Ton	25
Concrete Removal				
			Cu. Yd.	1.3
Concrete Superstructures				
			Cu. Yd.	20.2
Reinforcement Bars, Epoxy Coated				
			Pound	2,760
Rail Anchor Assemblies				
			Each	18
Concrete Sealer				
			Sq. Ft.	715

SOUTH ABUTMENT
 SVT BRIDGE NO. 14
 STRUCTURE NO 084-8014

DESIGNED - S.M.S.
CHECKED - S.W.M.
DRAWN - D.A.B.
CHECKED - S.M.S.

MIN. BAR LAP
 #4 = 1'-8"
 #6 = 2'-7"

HAMPTON, LENZINI & RENWICK, INC.
 CIVIL & STRUCTURAL ENGINEERS
 LAND SURVEYORS

HLR

3085 STEVENSON DRIVE, SUITE 201
 SPRINGFIELD, ILLINOIS 62703
 (217) 546-3400

PROJECT NUMBER: 12-84-0090 DATE: 01/11/10

SHEET NO. 11	T.R.	SECTION	COUNTY	TOTAL SHEETS	SHEET NO.
13 SHEETS		05-00713-00-BT	SANGAMON	173	104
		SVT. OVER SPRING CREEK	CONTRACT	003522	
		FED. ROAD DIST. NO.	ILLINOIS	FED. AID PROJECT	