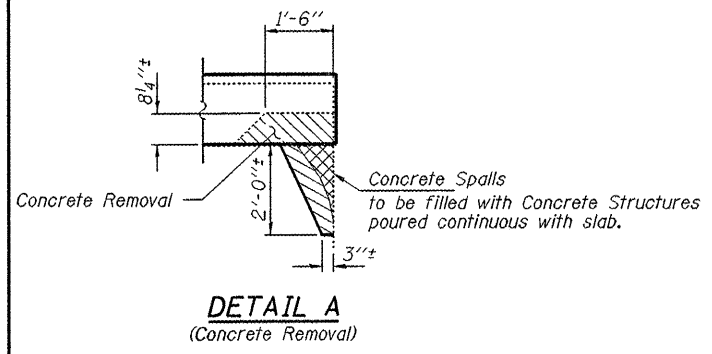
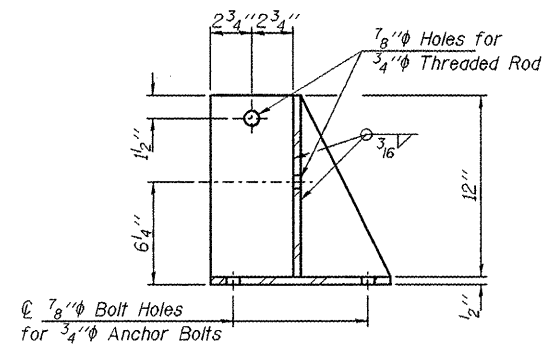


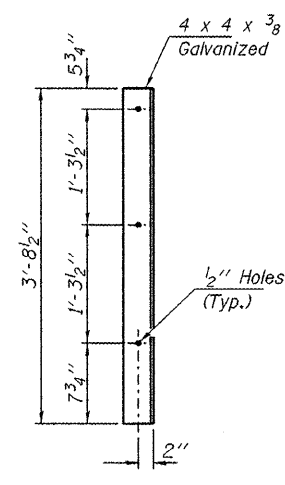
ELEVATION



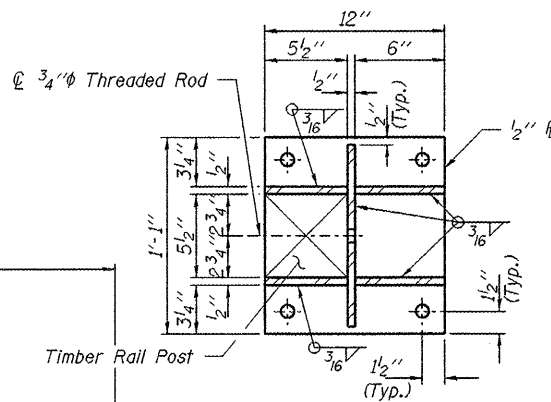
DETAIL A
(Concrete Removal)



ELEVATION

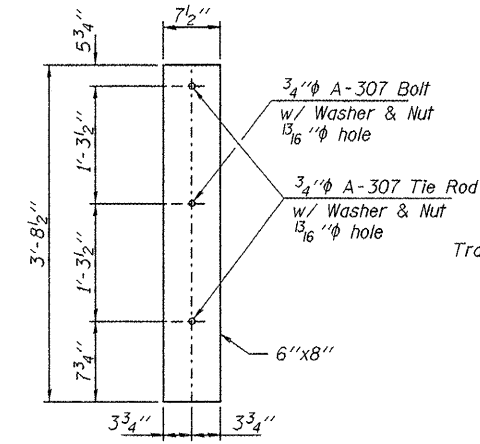


ANGLE

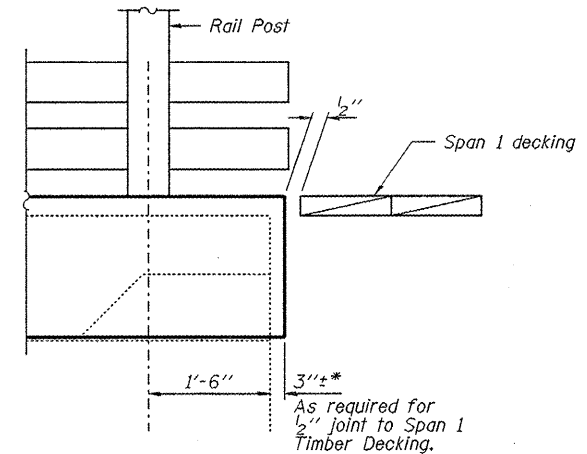


PLAN

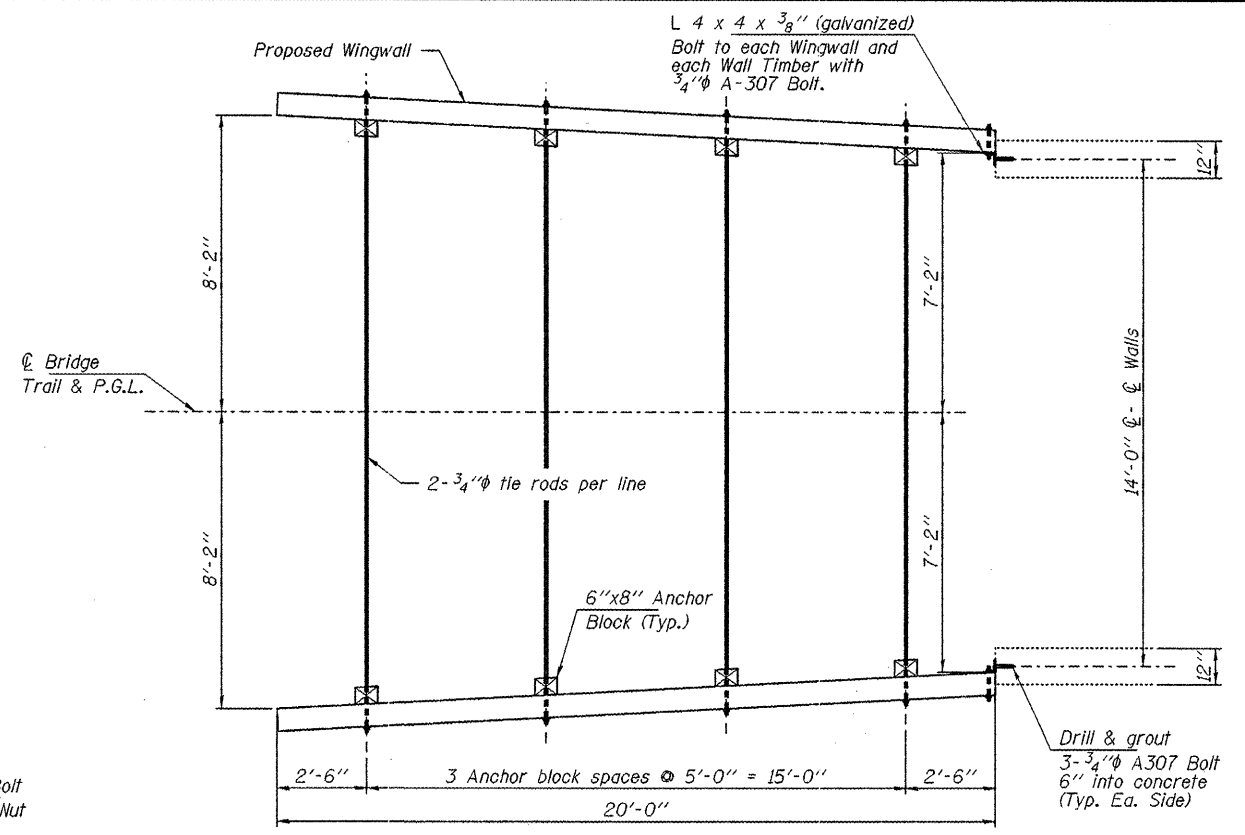
DETAIL B
(18 Required)
(Includes 4 anchor bolts per assembly.)



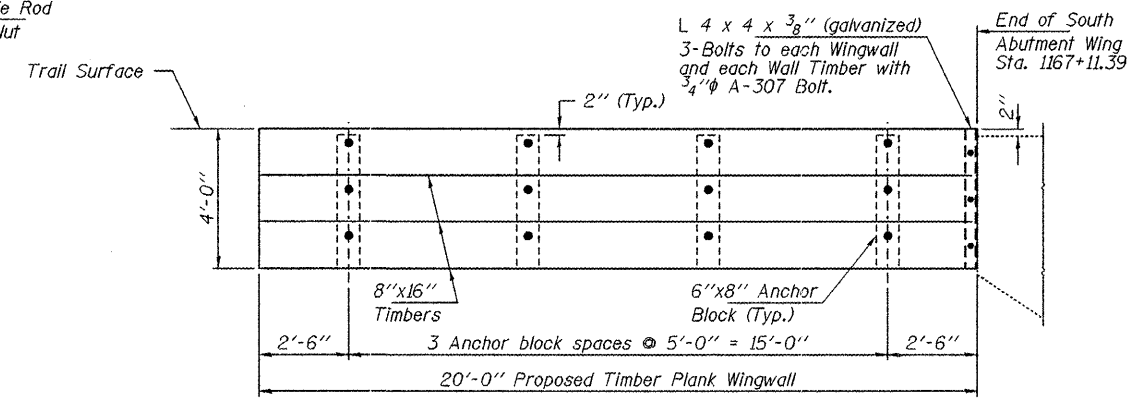
ANCHOR BLOCK DETAIL



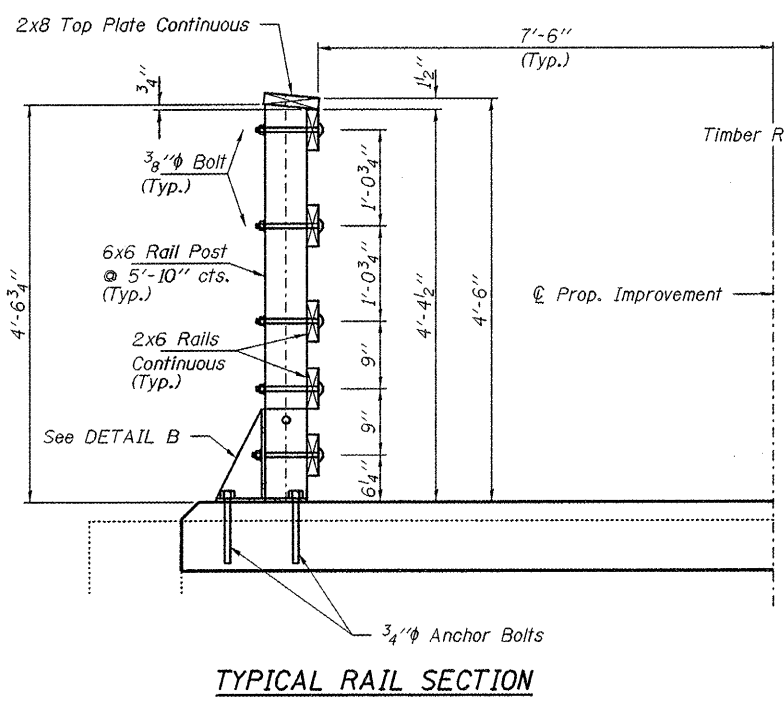
DETAIL C
(Expansion Gap)



PLAN



WINGWALL ELEVATION



TYPICAL RAIL SECTION

TREATED TIMBER SCHEDULE

Nominal Member Size	Total Length (Ft.)	Quantity (F.B.M.)
6"x8"	31	123
8"x16"	120	1,280
2"x8"	95	127
2"x6"	475	475
6"x6"	80	240

NOTES

- All bolts, nuts, washers, lag screws and miscellaneous fasteners shall conform to ASTM A-307 and shall be galvanized.
- All threaded rods shall conform to ASTM A-36 and shall be galvanized.
- Structure Excavation required to construct timber retaining wall shall be included in cost of Treated Timber.

BILL OF MATERIAL - S. ABUT. RAIL

Item	Unit	Quantity
Treated Timber	F.B.M.	2,244
Hardware	Pound	1,350

SOUTH ABUTMENT DETAILS
SVT BRIDGE NO. 14
STRUCTURE NO 084-8014

DESIGNED - S.M.S.
CHECKED - S.W.M.
DRAWN - D.A.B.
CHECKED - S.M.S.

HAMPTON, LENZINI & RENWICK, INC.
CIVIL & STRUCTURAL ENGINEERS
LAND SURVEYORS
3085 STEVENSON DRIVE, SUITE 201
SPRINGFIELD, ILLINOIS 62703
(217) 546-3400

SHEET NO. 12
13 SHEETS

T.R.	SECTION	COUNTY	TOTAL SHEETS	SHEET NO.
	05-00713-00-BT	SANGAMON	173	105
S.V.T. OVER SPRING CREEK		CONTRACT NO.		
FED. ROAD DIST. NO.	ILLINOIS FED. AID PROJECT	93522		

PROJECT NUMBER: 12-84-0090 DATE: 05/28/08