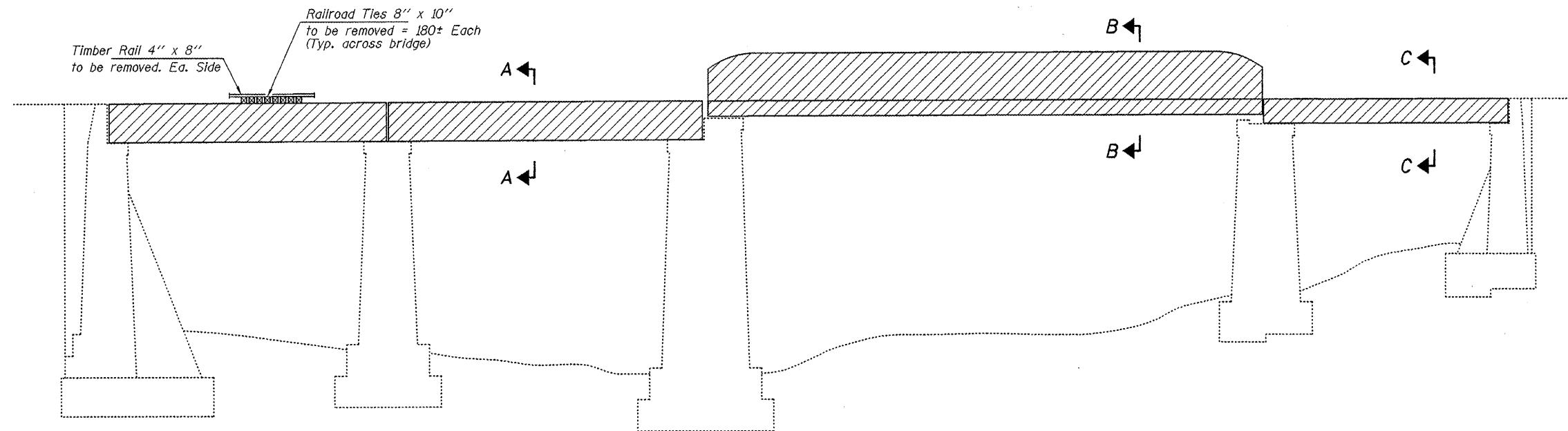
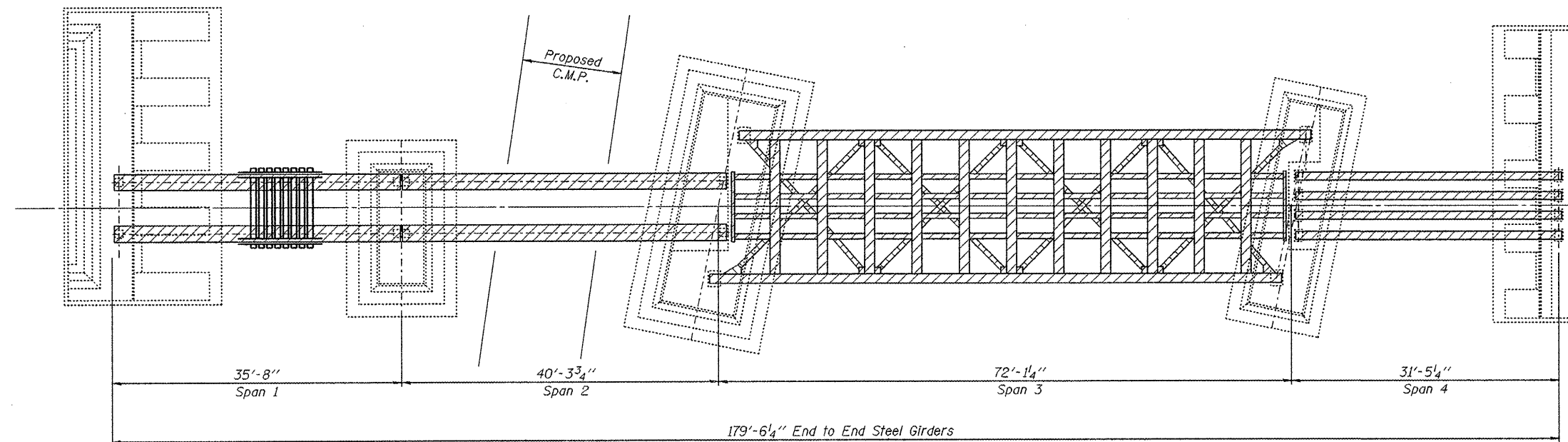


EXISTING STRUCTURE: CN&W Railroad SN1860 was originally built in 1912. The existing structure is a four span steel plate girder bridge on closed concrete abutments and solid concrete piers on footings. Spans 1, 2 and 4 consist of timber ties over the top of girders, and Span 3 utilizes thru-type girders on both sides. The existing structure is 182'-6 1/4" back to back of abutments. The existing ties are 10'-0"± out to out. The existing ties will be removed and replaced with a timber deck system and pedestrian railing.

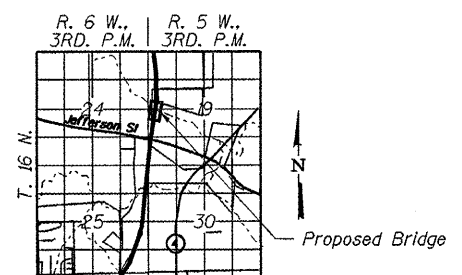
Salvage by Contractors.



ELEVATION



PLAN



LOCATION SKETCH

DESIGNED - D.T.M.
CHECKED - S.W.M.
DRAWN - D.A.B.
CHECKED - S.W.M.

BILL OF MATERIAL

ITEM	UNIT	TOTAL
Removal of Existing Structures	Each	1
*Concrete Removal	Cu. Yd.	4.30
*Steel Removal	Pound	322,816
*Timber Ties Removal	Foot	2,160

*Estimated Quantity For Information Only
Cost included in Removal of Existing Structures.

HAMPTON, LENZINI & RENWICK, INC.
CIVIL & STRUCTURAL ENGINEERS
LAND SURVEYORS

HLR 3085 STEVENSON DRIVE, SUITE 201
SPRINGFIELD, ILLINOIS 62703
(217) 546-3400

PROJECT NUMBER: 12-84-0080 DATE: 06/04/09

SHEET NO. 1 3 SHEETS	T.R.	SECTION	COUNTY	TOTAL SHEETS	SHEET NO.
		05-00713-00-BT	SANGAMON	173	113
S.V.T. OVER SPRING CREEK TRIB.			CONTRACT NO. 93522		
FED. ROAD DIST. NO.		ILLINOIS	FED. AID PROJECT		

SUPERSTRUCTURE REMOVAL
SVT BRIDGE NO. 16