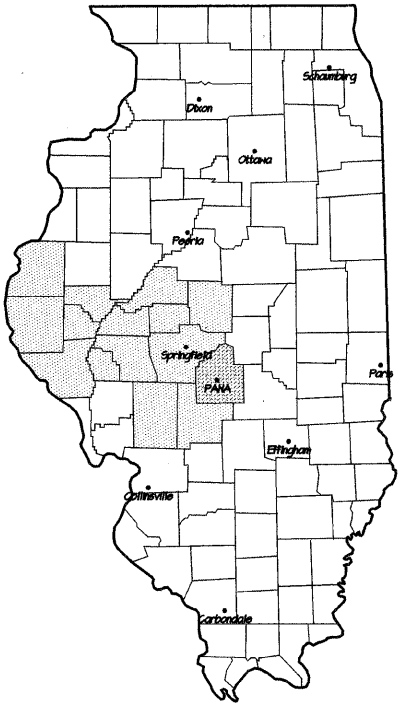


ROUTE NO.	SECTION	CITY	TOTAL SHEETS	SHEET NO.
F.A.U. 7944	96-00046-00-PV	PANA	17	1
FED. ROAD DIST NO.	ILLINOIS		PROJECT	ARA-M-5053(006)



INDEX OF SHEETS

SHEET NO.	TITLE
1	COVER SHEET
2	TYPICAL SECTIONS & DETAILS
3	CONT. TIES, GEOMETRICS & SUMMARY OF QUANTITIES
4	QUANTITY SCHEDULE
5	PLAN & PROFILE: CHESTNUT STREET STA. 59+00 TO 64+40
6	PLAN & PROFILE: CHESTNUT STREET STA. 64+40 TO 70+00
7	INTERSECTION PLAN
8	PAVEMENT MARKING & SIGNAGE
9	SEDIMENT & EROSION CONTROL
10	CROSS SECTIONS: CHESTNUT STREET STA. 59+00 TO 59+80
11	CROSS SECTIONS: CHESTNUT STREET STA. 60+00 TO 61+20
12	CROSS SECTIONS: CHESTNUT STREET STA. 61+40 TO 62+80
13	CROSS SECTIONS: CHESTNUT STREET STA. 62+69 TO 64+00
14	CROSS SECTIONS: CHESTNUT STREET STA. 64+20 TO 65+80
15	CROSS SECTIONS: CHESTNUT STREET STA. 66+60 TO 67+20
16	CROSS SECTIONS: CHESTNUT STREET STA. 67+40 TO 68+60
17	CROSS SECTIONS: CHESTNUT STREET STA. 68+80 TO 70+00

STATE OF ILLINOIS
DEPARTMENT OF TRANSPORTATION
DIVISION OF HIGHWAYS

SURFACE TRANSPORTATION/URBAN PROGRAM W/ ARRA FUNDING

PLANS FOR
CHESTNUT STREET IMPROVEMENTS
PANA, ILLINOIS

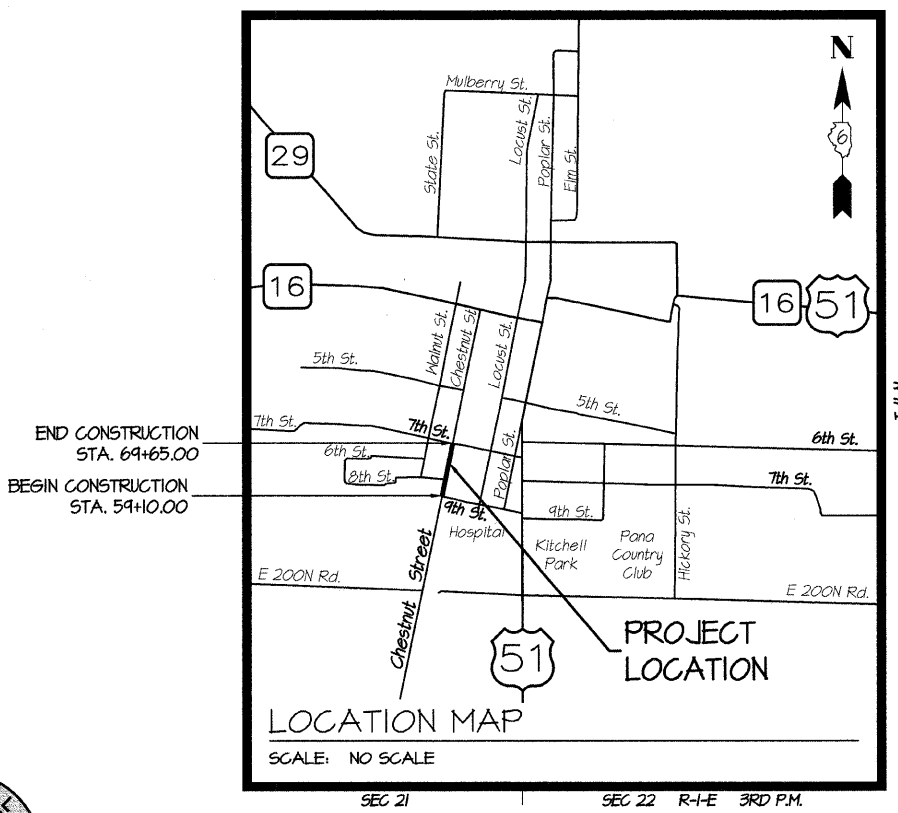
F.A.U. ROUTE 7944
CHRISTIAN COUNTY, ILLINOIS
LOCAL AGENCY: CITY OF PANA, ILLINOIS
PROJECT NO.: ARA-M-5053(006)
SECTION 96-00046-00-PV
JOB NUMBER C-96-221-04

I.D.O.T. STANDARD DRAWINGS

STANDARD NO.	TITLE OR DESCRIPTION
000001-05	STANDARD SYMBOLS, ABBREVIATIONS AND PATTERNS
280001-05	TEMPORARY EROSION CONTROL SYSTEMS
424001-05	CURB RAMPS FOR SIDEWALK
542301-02	PRECAST REINFORCED CONCRETE FLARED END SECTION
542401-01	METAL END SECTION FOR PIPE CULVERTS
602301-02	INLET - TYPE A
602306-02	INLET - TYPE B
604036-02	GRATE TYPE B
606001-04	CONCRETE CURB TYPE B AND COMBINATION CONCRETE CURB AND GUTTER
701501-05	URBAN LANE CLOSURE, 2L, 2W, UNDIVIDED
701801-04	LANE CLOSURE MULTILANE 1W OR 2W CROSSWALK OR SIDEWALK CLOSURE
701901-01	TRAFFIC CONTROL DEVICES
720006-02	SIGN PANEL ERECTION DETAILS
729001-01	APPLICATIONS OF TYPES A AND B METAL POSTS (FOR SIGNS AND MARKERS)
780001-02	TYPICAL PAVEMENT MARKINGS
720011-01	METAL POSTS / SIGNS
BLR 10-6	PCC PAVEMENT SPECIAL (NONREINFORCED)
BLR 22-6	TYPICAL APPLICATION OF TRAFFIC CONTROL DEVICES FOR CONSTRUCTION ON RURAL LOCAL HIGHWAYS (TWO-LANE TWO-WAY RURAL TRAFFIC) (ROAD CLOSED TO THRU TRAFFIC)
729001-01	APPLICATIONS OF METAL POSTS / SIGNS

UTILITY COMPANY INFORMATION

Water & Sewer City of Pana, Illinois 120 East Third Street Pana, IL 217-562-2213	Electricity/Gas Ameren CIPS 607 E Adams St Springfield, IL 217-523-3600
Cable Television Charter Communications 11 Clearing Avenue Taylorville, IL 62568 217-287-7991	Telephone/Internet Service Consolidated Communications 121 S 17th Street Mattoon, IL 1-800-553-9981

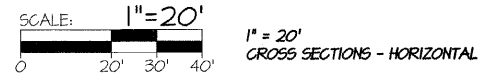
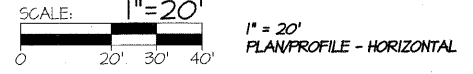
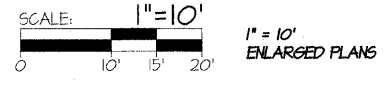
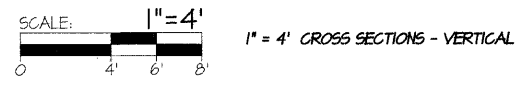
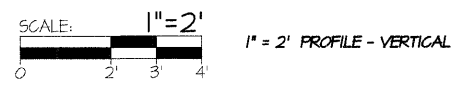


NET LENGTH OF PROJECT: 1,055.00 FT. = 0.200 MI.

CONTRACT No. 93524

PROJECT DESCRIPTION:

THE PROJECT CONSISTS OF SHIFTING THE ALIGNMENT OF CHESTNUT STREET, RECONSTRUCTION AND WIDENING OF THE PAVEMENT WITH 6.5" JOINTED PORTLAND CEMENT CONCRETE AND INSTALLATION OF A NEW STORM SEWER FROM 9TH STREET TO 7TH STREET.



APPROVED JANUARY 21 20 10

Steve D. Sipe
MAYOR
CITY OF PANA, ILLINOIS

PASSED FEBRUARY 1 20 10

Tommy J. ...
DISTRICT SIX ENGINEER OF
LOCAL ROADS & STREETS

PASSED February 1 20 10

Ron Sheehan
DISTRICT SIX ENGINEER OF
CONSTRUCTION

Releasing For
Bid Based on
Limited Review

Raymond D. ...
DEPUTY DIRECTOR OF HIGHWAYS
REGION FOUR ENGINEER

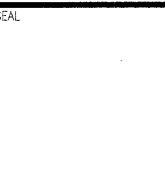
STATE OF ILLINOIS
DEPARTMENT OF TRANSPORTATION

DESIGN DESIGNATION

FUNCTIONAL CLASSIFICATION: COLLECTOR STREET
ADT: 1,100 (2030)
DESIGN SPEED: 30 MPH
POSTED SPEED: 30 MPH

CONSULTING ENGINEERS
2900 N. MARTIN LUTHER KING, JR. DRIVE
DECATUR, ILLINOIS 62526
(217) 877-2100 • FAX (217) 877-4816
PROFESSIONAL DESIGN FIRM #184-001101 EXPIRES: 04/30/2011

SCALE		REVISIONS			
1" = 20'		NO.	DATE	APPR.	DESCRIPTION
DRAWN BY		1	01.19.10	AKL	PER IDOT COMMENTS
DATE					
CHECKED BY					
DATE					



DESIGN ENGINEERS
SKS ENGINEERS, INC.

BY: AKL
ADRIENNE K. LYNCH P.E.

SEAL
ADRIENNE K. LYNCH
52612
REGISTERED PROFESSIONAL ENGINEER OF ILLINOIS
LICENSE EXPIRES: 11/30/2011

PROJECT NAME
CHESTNUT STREET IMPROVEMENTS
FROM 7th STREET TO 9th STREET
PANA, ILLINOIS
F.A.U. ROUTE 7944 - SECTION 96-00046-00-PV

COVER SHEET

PROJECT NUMBER
911584

SHEET NUMBER
1/17

Drawing Name: F:\2009\11584 Pana\DWG\11584-CoverTypical.dwg
 Last Edited By: Reid Torbeck
 Date: 20 Jan 2010 - 4:39pm