

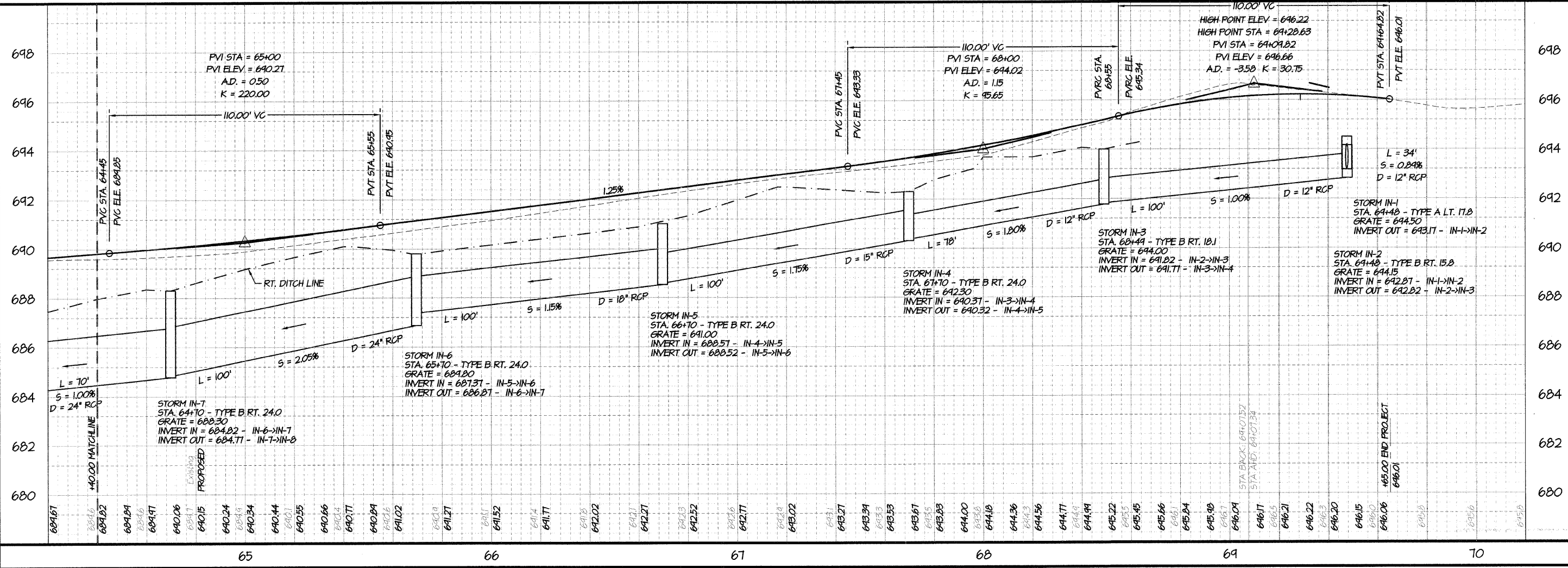
REVISIONS

| NO. | DATE | APPR. | DESCRIPTION |
|-----|----------|-------|-------------------|
| 1 | 01.18.10 | AKL | PER IDOT COMMENTS |

SCALE: 1" = 20'
 DRAWN BY: AKL
 DATE: 2009 AUG 29
 CHECKED BY: AKL
 DATE: 2009 AUG 29

CHESTNUT STREET IMPROVEMENTS
 FROM 7th STREET TO 9th STREET
 PANA, ILLINOIS
 F.A.U. ROUTE 7944 - SECTION 96-00046-00-PV
PLAN & PROFILE - STA. 64+40 - STA. 70+00

SCALE:
 H: 1"=20'
 V: 1"=2'



Thu, 21 Jan 2010 10:46am Last Edited By: Reid Torbeck Drawing Name: P:\2009\9611584-Pana\DK\9611584-2\FPX.dwg

S&S ENGINEERS, INC.
 2800 N. MARTIN LUTHER KING, JR. DRIVE
 DECATUR, ILLINOIS 62526
 (317) 877-2100 • FAX (317) 877-4818
 WWW.SSENGR.COM