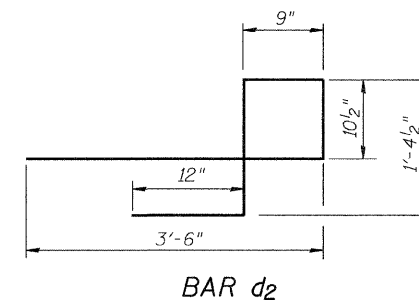
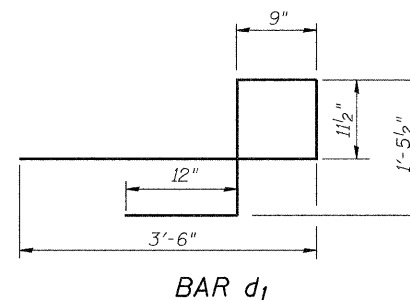
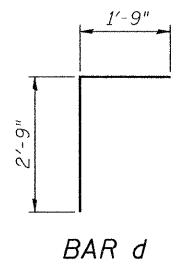
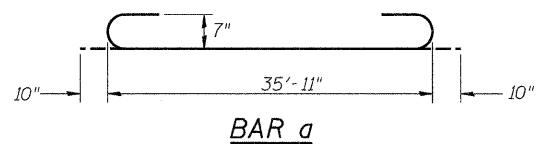
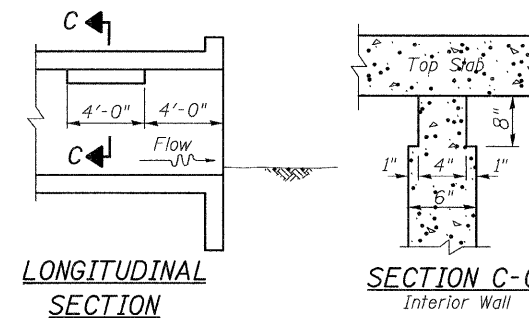


DRAIN DETAIL



Bar	a	b	c	d
h ₄	5'-0"	3'-0"	1'-10"	2'-4 1/2"
h ₅	8'-0"	3'-0"	1'-10"	2'-4 1/2"
h ₆	5'-0"	3'-0"	2'-4 1/2"	1'-10"
h ₇	10'-0"	3'-0"	2'-4 1/2"	1'-10"

BARS h₄, h₅, h₆, & h₇



Note: Notch by rough-finished board attached to and removed with formwork, each interior wall. (Do not chamfer)

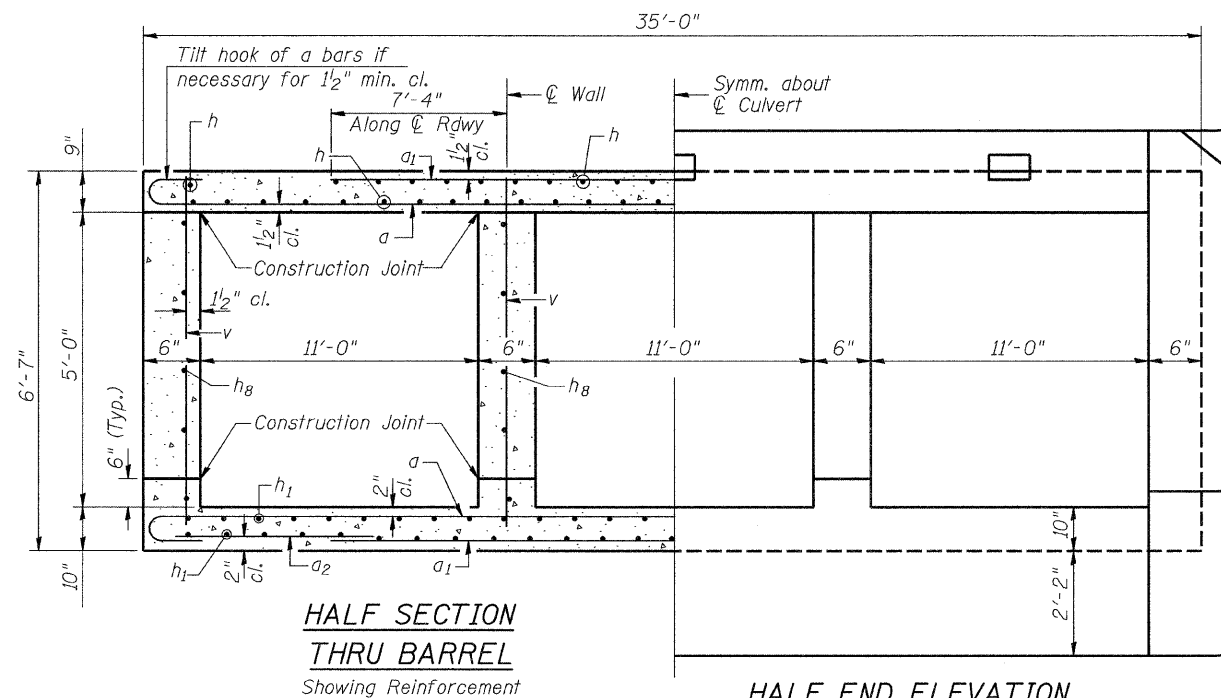
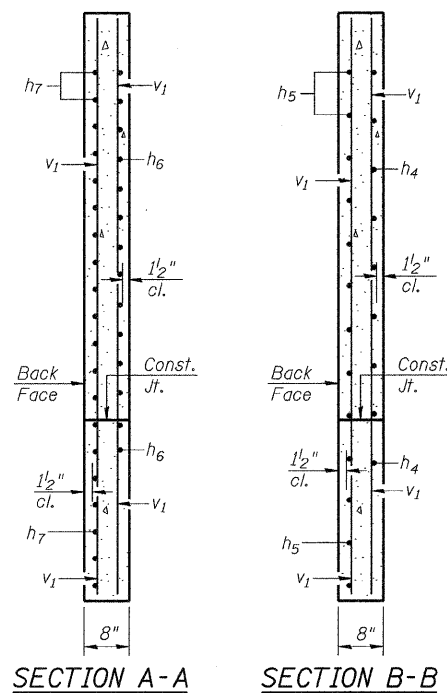
PHOEBE NESTING SITE DETAIL

(Downstream End Only - Cost included with Concrete Box Culverts)

BILL OF MATERIAL

Bar	No.	Size	Length	Shape
a	104	#7	37'-7"	
a ₁	104	#7	26'-8"	
a ₂	40	#4	6'-0"	
d	70	#4	4'-6"	
d ₁	66	#6	7'-8"	
d ₂	66	#6	7'-6"	
h	100	#5	20'-6"	
h ₁	110	#5	20'-6"	
h ₂	8	#6	35'-11"	
h ₃	10	#6	34'-11"	
h ₄	18	#7	8'-0"	
h ₅	26	#7	11'-0"	
h ₆	28	#7	8'-0"	
h ₇	40	#7	13'-0"	
h ₈	40	#5	20'-6"	
v	220	#4	6'-3"	
v ₁	16	#4	9'-4"	
Concrete Box Culverts			CU YD	107.7
① Reinforcement Bars			POUND	25,250

① See Special Provisions



**CULVERT DETAILS
LOGAN COUNTY
SECTION 09-00119-00-BR
COUNTY HIGHWAY 10 OVER
LAKE FORK CREEK TRIBUTARY**

SHEET NO. 3 4 SHEETS	ROUTE NO.	SECTION	COUNTY	TOTAL SHEETS	SHEET NO.
	CH 10	09-00119-00-BR	LOGAN	17	9
	S.N. 054-3922		CONTRACT NO. 93525		
FED. ROAD DIST. NO. 7 ILLINOIS			FED. AID PROJECT BRS-0566107		