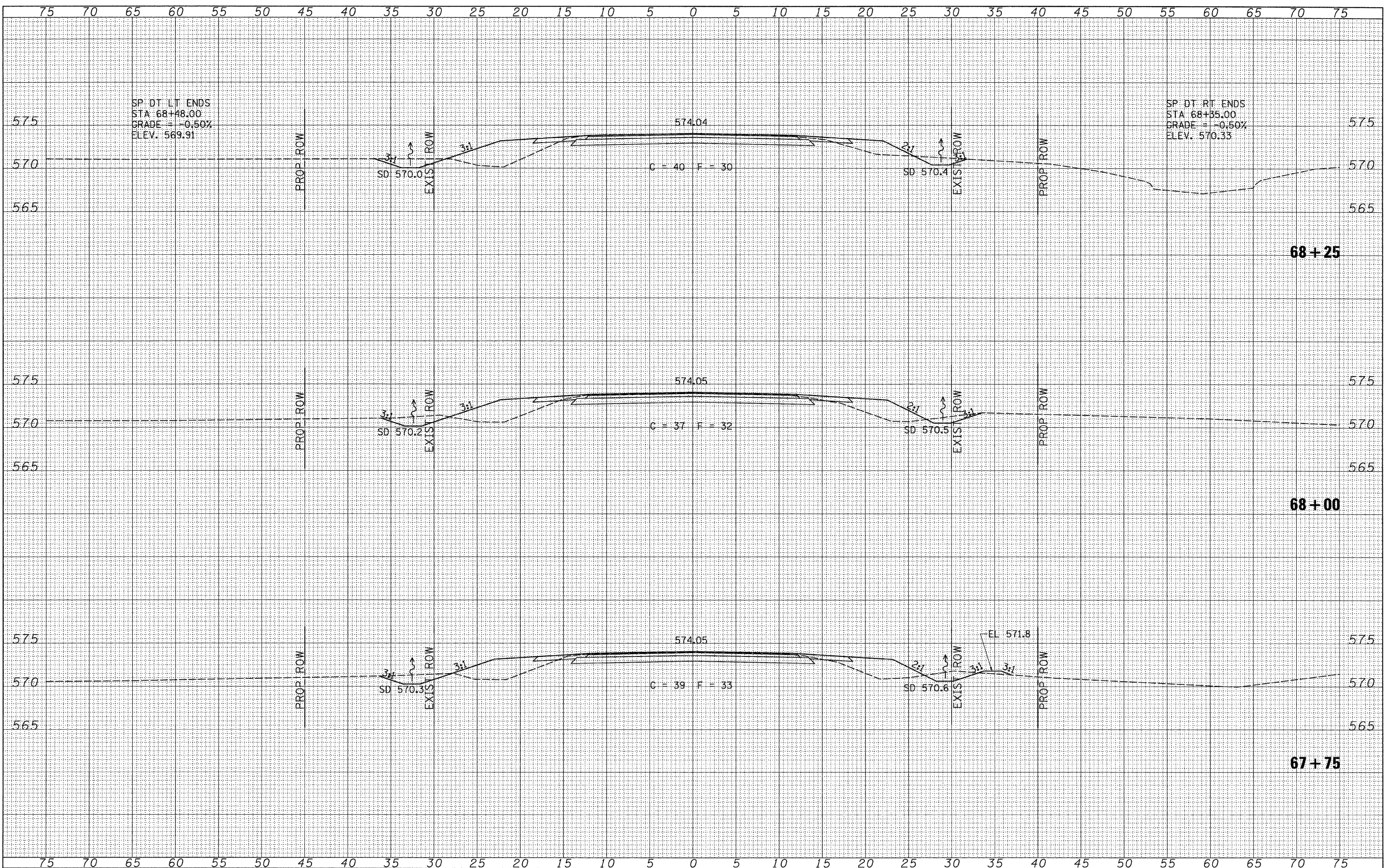


DATE	
BY	
FINAL SURVEY	
REVISION	
NOTE BOOK	
NO.	
AREAS CHECKED	

DATE	
BY	
ORIGINAL SURVEY	
REVISION	
NOTE BOOK	
NO.	
AREAS CHECKED	



SP DT LT ENDS
 STA 68+48.00
 GRADE = -0.50%
 ELEV. 569.91

SP DT RT ENDS
 STA 68+35.00
 GRADE = -0.50%
 ELEV. 570.33

68+25

68+00

67+75

FILE NAME = V:\Bridg\2755-Logan\2755xsheets.dgn	USER NAME = cthomas	DESIGNED -	REVISED -	LOGAN COUNTY COUNTY HIGHWAY 10 OVER LAKE FORK CREEK TRIBUTARY	CROSS SECTIONS SCALE: 1" = 5'-0" SHEET NO. 3 OF 7 SHEETS STA. 67+75.00 TO STA. 68+25.00		F.A.S. RTE. 566	SECTION 09-00119-00-BR	COUNTY LOGAN	TOTAL SHEETS 17	SHEET NO. 13
		DRAWN -	REVISED -								
		CHECKED -	REVISED -								
		DATE -	REVISED -								
						CONTRACT NO. 93525		FED. ROAD DIST. NO. 7 ILLINOIS		FED. AID PROJECT BRS-0566(107)	