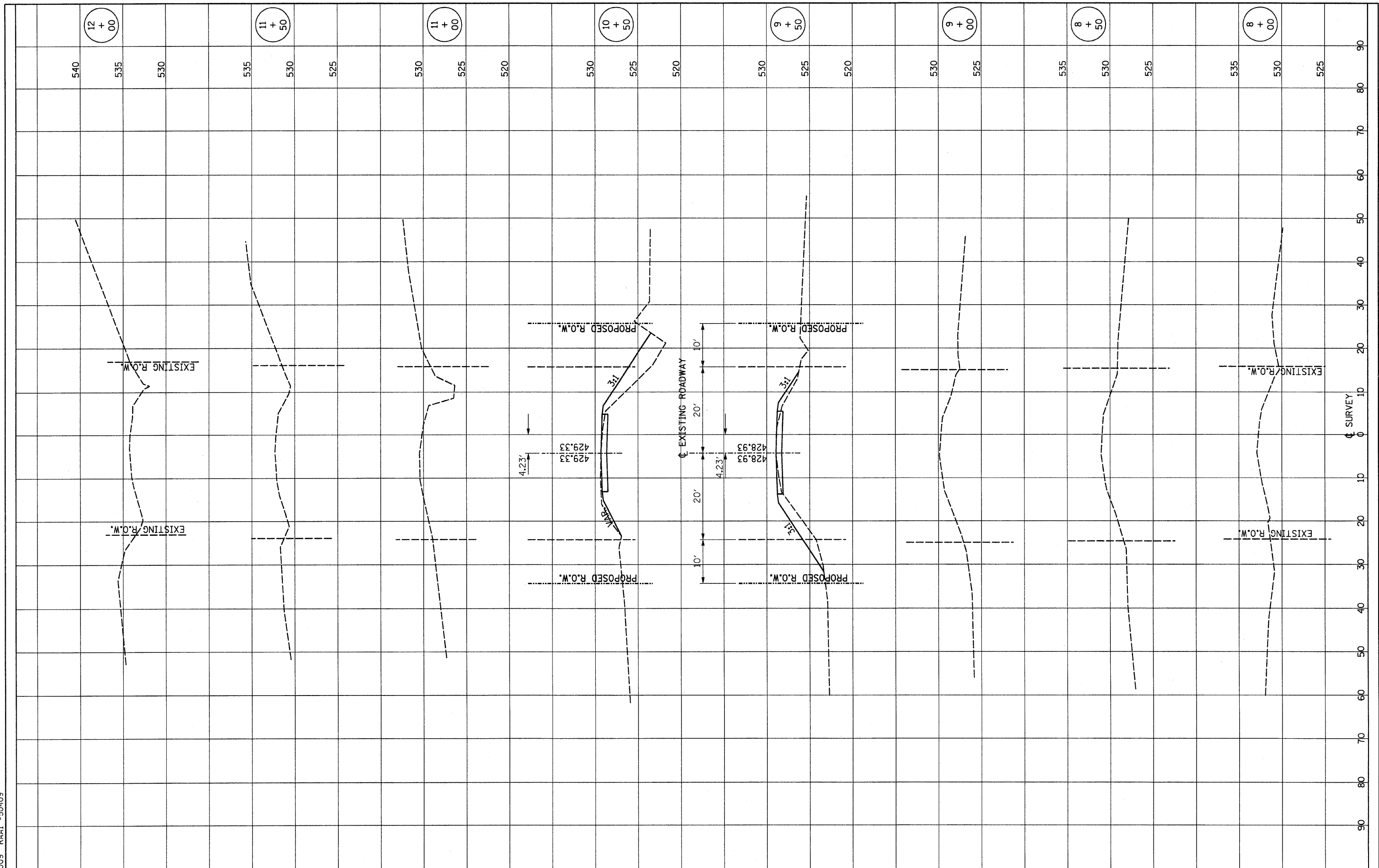


FINAL SURVEY NOTE BOOK NO.	SURVEYED PLOTTED TEMPLATE AREAS CHECKED	BY	DATE

ORIGINAL SURVEY NOTE BOOK NO.	SURVEYED PLOTTED TEMPLATE AREAS CHECKED	BY	DATE

12/28/2009 RAAI #50409



DESIGNED -	GLH	REVISED -	
DRAWN -	JN	REVISED -	
CHECKED -	GLH	REVISED -	
DATE -		REVISED -	

STATE OF ILLINOIS  
DEPARTMENT OF TRANSPORTATION

CROSS SECTIONS OF ROADWAY  
BRIDGE OVER RICHLAND CREEK

SCALE: AS NOTED

STA. 8+00 TO STA. 12+00

ROUTE	SECTION	COUNTY	TOTAL SHEETS	SHEET NO.
TR 292	03-20126-00-BR	FAYETTE	10	10
CONTRACT NO. 95619			ILLINOIS FED. AID PROJECT	