

STATE OF ILLINOIS
 DEPARTMENT OF TRANSPORTATION
 DIVISION OF HIGHWAYS
 PLANS FOR PROPOSED
 FEDERAL-AID HIGHWAY BRIDGE PROGRAM

T.R.39
 JASPER COUNTY
 SECTION 07-04124-00-BR
 GROVE ROAD DISTRICT
 STRUCTURE NO. 040-3259
 PROJECT NO. BROS-0079(141)
 JOB NO. C-97-066-10

INDEX OF SHEETS

- 1 COVER SHEET
- 2 PLAN & PROFILE
- 3-4 CROSS SECTIONS
- 5-9 BRIDGE PLANS

- STANDARDS:
- 280001-05 - EROSION CONTROL
 - 515001-03 - NAME PLATE
 - 635006-03 - TERMINAL MARKERS
 - 701901-01 - TRAFFIC
 - BLR 21-8 - TRAFFIC
 - BLR 22-6 - TRAFFIC

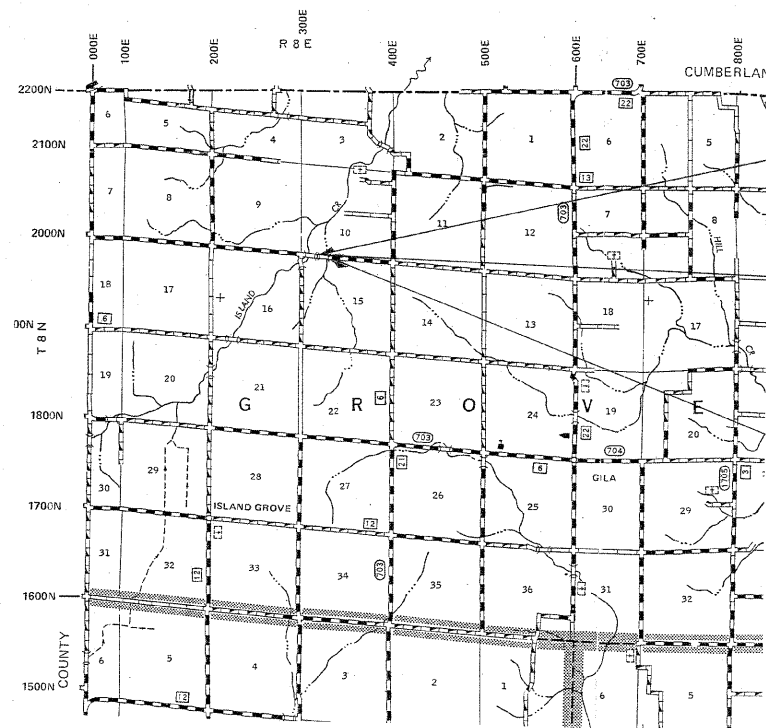
SCALES

- PLAN 1 INCH = 50 FEET
- PROFILE HORZ. 1 INCH = 50 FEET
- PROFILE VERT. 1 INCH = 10 FEET
- CROSS SECTION 1 INCH = 5 FEET

SUMMARY OF QUANTITIES

QTY	UNIT	ITEM	CODE NO
10	EACH	SETTING PILES IN ROCK	Z0065000
12	UNITS	TREE REMOVAL (6 TO 15 UNITS DIAMETER)	20100110
196	CU YD	EARTH EXCAVATION	20200100
480	CU YD	CHANNEL EXCAVATION	20300100
576	CU YD	FURNISHED EXCAVATION	20400800
122	TON	POROUS GRANULAR EMBANKMENT	20700110
0.53	ACRE	SEEDING, CLASS 2 (SPECIAL)	25001000
36	FOOT	TEMPORARY DITCH CHECKS	28000305
75	FOOT	PERIMETER EROSION BARRIER	28000400
205	TON	STONE DUMPED RIPRAP, CLASS A4	28100807
139	TON	STONE RIPRAP DITCH	28102600
1	EACH	REMOVAL OF EXISTING STRUCTURES	50100100
25.4	CU YD	CONCRETE STRUCTURES	50300225
2105	SQ FT	PRECAST PRESTRESSED CONCRETE DECK BEAMS (33" DEPTH)	50400605
3900	POUND	REINFORCEMENT BARS	50800105
152	FOOT	STEEL RAILING, TYPE S1	50900205 *
165	FOOT	FURNISHING STEEL PILES HP 12x53	51201600
1	EACH	NAME PLATES	51500100
102	FOOT	PIPE CULVERTS, CLASS D, TYPE 1 15"	542D0220
1	L SUM	MOBILIZATION	67100100
1	L SUM	TRAFFIC CONTROL AND PROTECTION	70101700
4	EACH	TERMINAL MARKER-DIRECT APPLIED	78201000 *

* SPECIALTY ITEMS



SECTION 07-04124-00-BR
 BEGINS STA. 2+00

STA. 4+52 - SPECIAL BRIDGE DESIGN
 PROPOSED PRECAST PRESTRESSED
 CONCRETE DECK BEAM BRIDGE.
 1 SPAN @ 75', 28' RDWY., SKEW = 10°R.F.
 PROP. STR. NO. 040-3259
 EXIST. STR. NO. 040-9901

SECTION 07-04124-00-BR
 ENDS STA. 7+00

FUNCTIONAL CLASS: RURAL LOCAL ROAD
 ADT = 125
 DESIGN SPEED = 30MPH

LOCATION MAP

APPROXIMATE SCALE: 1 INCH = 1 MILE
 NET LENGTH = 500 L.F. = 0.095 MILES

TOLL FREE JOINT UTILITY LOCATING
 INFORMATION FOR EXCAVATORS (J.U.L.I.E.)
 TELEPHONE NO. 1-800-892-0123 OR 811

PROFESSIONAL DESIGN FIRM #184-000832

John P. St... 02/11/2010
 ILLINOIS REGISTERED PROFESSIONAL ENGINEER # 55012
 LICENSE EXPIRES NOVEMBER 30, 2011



ILLINOIS DEPARTMENT OF TRANSPORTATION

APPROVED: *2-12* 2010
Richard A. Giltner
 JASPER COUNTY ENGINEER

PASSED: *2-19* 2010
Maurice E. Kestel
 DISTRICT SEVEN ENGINEER
 OF LOCAL ROADS & STREETS

RELEASING FOR BID
 BASED ON LIMITED
 REVIEW: *2-19* 2010
Roger L. Driskell
 DEPUTY DIRECTOR OF HIGHWAYS,
 REGION FOUR ENGINEER