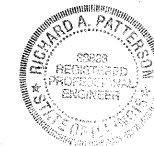


STATE OF ILLINOIS
DEPARTMENT OF TRANSPORTATION
DIVISION OF HIGHWAYS
PLANS FOR PROPOSED
FEDERAL AID SECONDARY PROJECT
SURFACE TRANSPORTATION RURAL
JASPER COUNTY

SECTION 09-00113-00-FP SECTION 09-00114-00-FP
F.A.S. 2707 - COUNTY HIGHWAY 4
JOB NO. C-97-064-10
PROJECT NO. RS-2707(107)

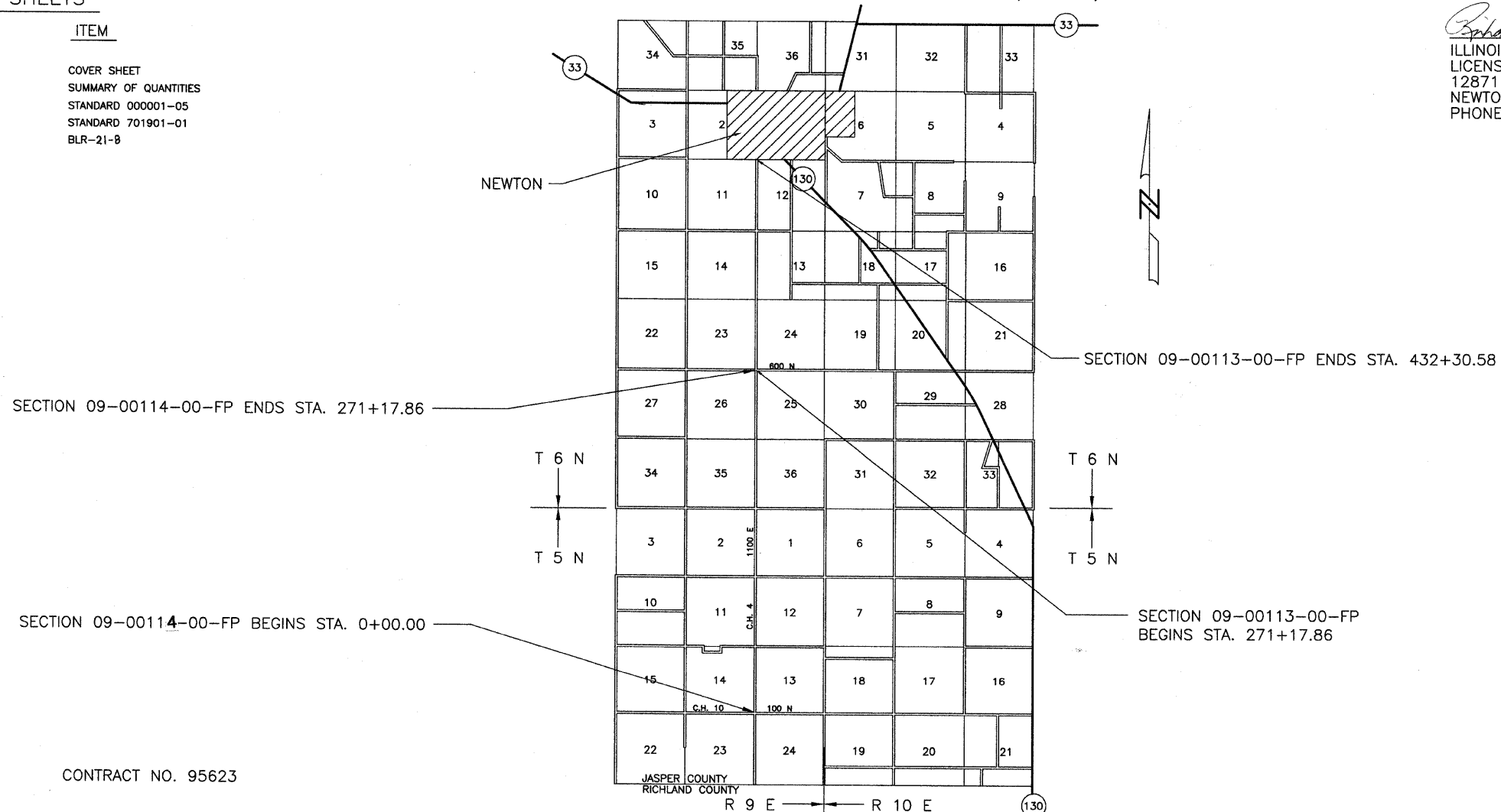
ROUTE	SECTION	COUNTY	TOTAL SHEETS	SHEET NO.
F.A.S. 2707	09-00113-00-FP	JASPER	2	1
F.A.S. 2707	09-00114-00-RS			
CONTRACT NO. 95623			ILLINOIS	PROJECT RS-2707(107)



THESE PLANS WERE PREPARED BY ME, OR A FULL TIME MEMBER OF MY STAFF, WORKING UNDER MY PERSONAL SUPERVISION.

Richard A. Patterson 2/8/10
ILLINOIS REG. PROF. ENG. 38893 DATE
LICENSE EXPIRES 11/30/11
12871 EAST STATE HWY 33
NEWTON, ILLINOIS 62448
PHONE 618-783-2915

INDEX OF SHEETS	
SHEET	ITEM
1	COVER SHEET
2	SUMMARY OF QUANTITIES
	STANDARD 000001-05
	STANDARD 701901-01
	BLR-21-8



RURAL MAJOR COLLECTOR
ADT = 1050
DESIGN SPEED = 50 MPH

CONTRACT NO. 95623

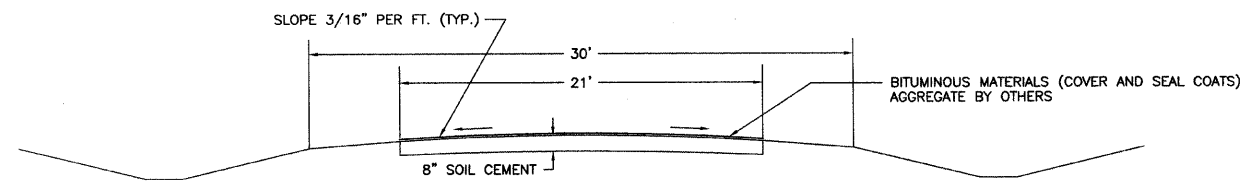
Joint Utility Locating Information for Excavators
JULIE 1-800-892-0123

NET LENGTH SECTION 09-00113-00-FP = 16,112.72 Ft. = 3.052 Mi.
NET LENGTH SECTION 09-00114-00-FP = 27,117.86 Ft. = 5.136 Mi.
TOTAL = 43,230.58 Ft. = 8.188 Mi.

APPROVED	<i>2-08</i> 20/10
	<i>Richard A. Patterson</i> COUNTY ENGINEER
STATE OF ILLINOIS DEPARTMENT OF TRANSPORTATION	
PASSED	<i>2-19</i> 20/10
	<i>Manuel E. Casati</i> DISTRICT SEVEN ENGINEER OF LOCAL ROADS AND STREETS
Releasing For Bid Based on Limited Review	<i>2-19</i> 20/10
	<i>Roger L. Dushell</i> DEPUTY DIRECTOR OF HIGHWAYS REGION FOUR ENGINEER

ROUTE	SECTION	COUNTY	TOTAL SHEETS	SHEET NO.
F.A.S. 2707	09-00113-00-FP	JASPER	2	2
F.A.S. 2707	09-00114-00-RS			
CONTRACT NO. 95623		ILLINOIS	PROJECT RS-2707(107)	

TYPICAL SECTION OF PROPOSED IMPROVEMENT

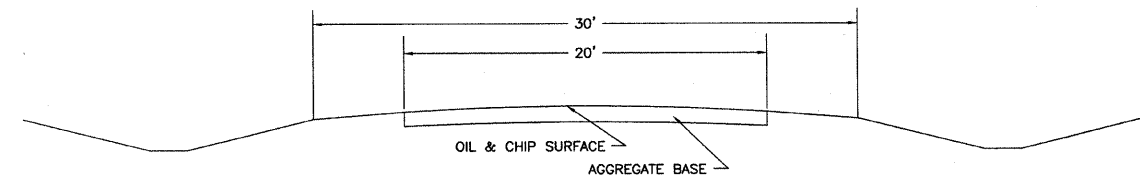


STA. 0+00.0 TO STA. 432+30.58

SECTION 09-00113-00-FP
SUMMARY OF QUANTITIES

QUANTITY	UNIT	ITEM	CODE NUMBER
37,596	SQ. YD.	PROCESSING SOIL-CEMENT BASE COURSE 8"	35200300
26,317	100 WT.	CEMENT	35200500
22,558	GALLON	BITUMINOUS MATERIALS (COVER AND SEAL COATS)	40300300

TYPICAL SECTION OF EXISTING ROAD



STA. 0+00.0 TO STA. 432+30.58

SECTION 09-00114-00-FP
SUMMARY OF QUANTITIES

QUANTITY	UNIT	ITEM	CODE NUMBER
63,275	SQ. YD.	PROCESSING SOIL-CEMENT BASE COURSE 8"	35200300
44,293	100 WT.	CEMENT	35200500
37,965	GALLON	BITUMINOUS MATERIALS (COVER AND SEAL COATS)	40300300

TOTAL PROJECT
SUMMARY OF QUANTITIES

QUANTITY	UNIT	ITEM	CODE NUMBER
100,871	SQ. YD.	PROCESSING SOIL-CEMENT BASE COURSE 8"	35200300
70,610	100 WT.	CEMENT	35200500
60,523	GALLON	BITUMINOUS MATERIALS (COVER AND SEAL COATS)	40300300
1	LUMP SUM	MOBILIZATION	67100100

PAVEMENT DESIGN DATA
SECTION 09-00113-00-FP

CLASS III ROAD
STRUCTURAL DESIGN TRAFFIC (S.D.T.) 2014 PC = 980
SU = 55
MU = 15

MINIMUM SOIL SUPPORT: I.B.R. = 3
PERCENT OF S.D.T. IN TRAFFIC LANE
P = 50%
S = 50%
M = 50%

TRAFFIC FACTOR = 0.018
STRUCTURAL NUMBER = 1.80

PAVEMENT STRUCTURE MATERIALS:
STAGE 1 - 8" SOIL-CEMENT BASE COURSE (500 PSI MIN.)
A-2 SEAL COAT (AGGREGATE BY OTHERS)
STAGE 2 - 2" H.M.A. 21' WIDE (FUTURE)

PAVEMENT DESIGN DATA
SECTION 09-00114-00-FP

CLASS III ROAD
STRUCTURAL DESIGN TRAFFIC (S.D.T.) 2014 PC = 505
SU = 30
MU = 15

MINIMUM SOIL SUPPORT: I.B.R. = 3
PERCENT OF S.D.T. IN TRAFFIC LANE
P = 50%
S = 50%
M = 50%

TRAFFIC FACTOR = 0.016
STRUCTURAL NUMBER = 1.60

PAVEMENT STRUCTURE MATERIALS:
STAGE 1 - 8" SOIL-CEMENT BASE COURSE (500 PSI MIN.)
A-2 SEAL COAT (AGGREGATE BY OTHERS)
STAGE 2 - 2" H.M.A. 21' WIDE (FUTURE)