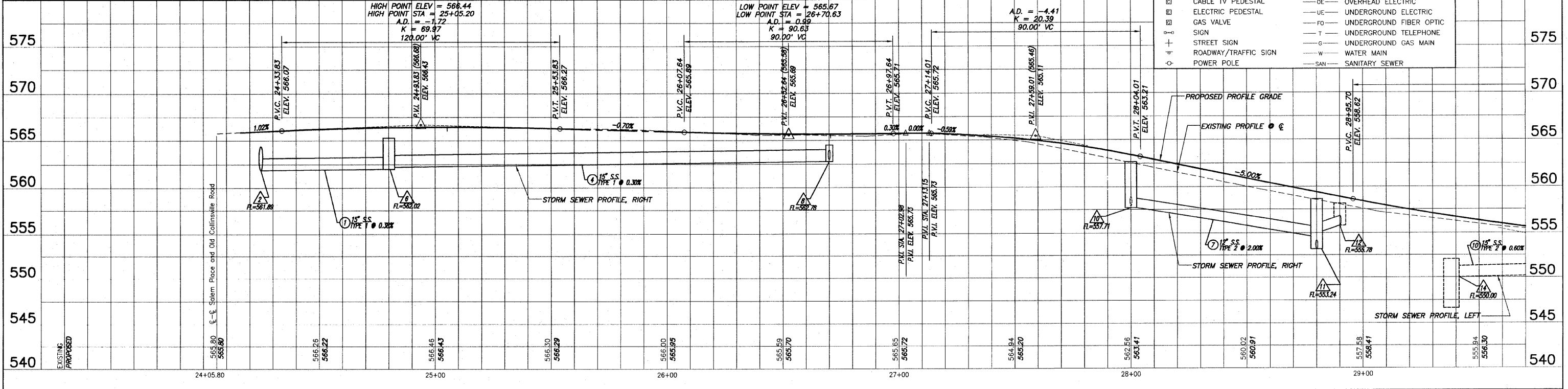
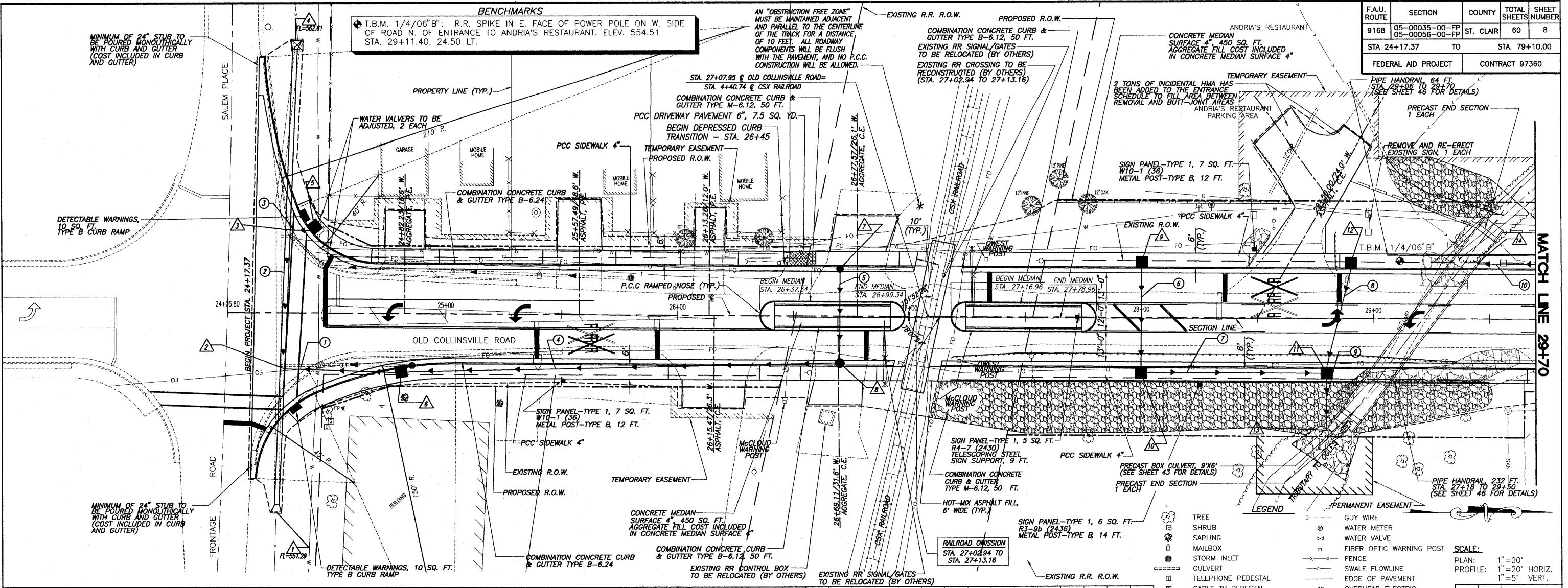


FA.U. ROUTE	SECTION	COUNTY	TOTAL SHEETS	SHEET NUMBER
916B	05-00035-00-FP 05-00056-00-FP	ST. CLAIR	60	8
STA 24+17.37 TO STA 29+10.00		FEDERAL AID PROJECT CONTRACT 97360		

BENCHMARKS

T.B.M. 1/4"06" B": R.R. SPIKE IN E. FACE OF POWER POLE ON W. SIDE OF ROAD N. OF ENTRANCE TO ANDRIA'S RESTAURANT. ELEV. 554.51 STA. 29+11.40, 24.50 LT.



- LEGEND**
- TREE
 - SHRUB
 - SAPLING
 - MAILBOX
 - STORM INLET
 - CULVERT
 - TELEPHONE PEDESTAL
 - CABLE TV PEDESTAL
 - ELECTRIC PEDESTAL
 - GAS VALVE
 - SIGN
 - STREET SIGN
 - ROADWAY/TRAFFIC SIGN
 - POWER POLE
 - GUY WIRE
 - WATER METER
 - WATER VALVE
 - FIBER OPTIC WARNING POST
 - FENCE
 - SWALE FLOWLINE
 - EDGE OF PAVEMENT
 - OVERHEAD ELECTRIC
 - UNDERGROUND ELECTRIC
 - UNDERGROUND FIBER OPTIC
 - UNDERGROUND TELEPHONE
 - UNDERGROUND GAS MAIN
 - WATER MAIN
 - SANITARY SEWER

SCALE:
 PLAN: 1"=20'
 PROFILE: 1"=20' HORIZ.
 1"=5' VERT.