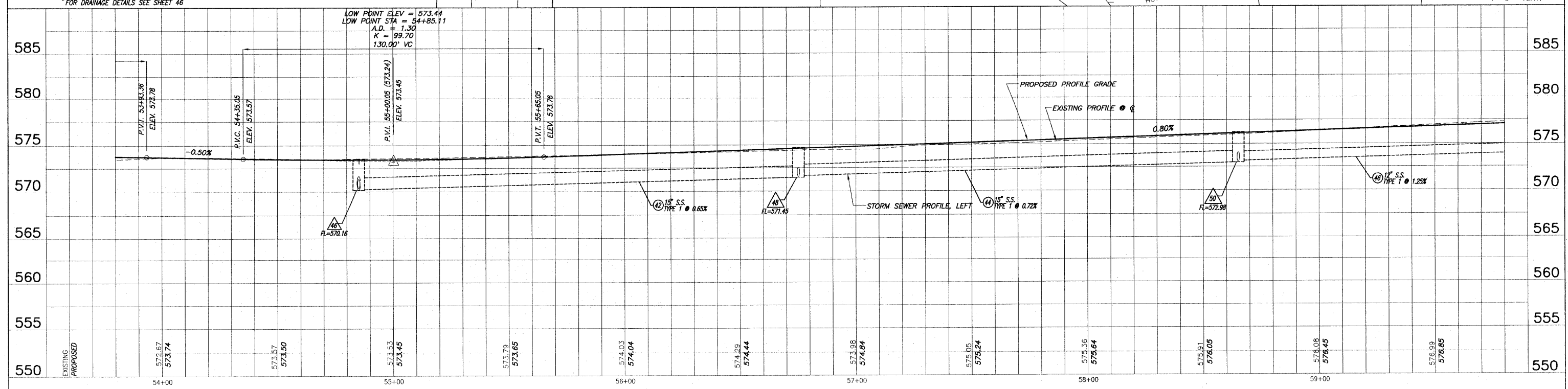
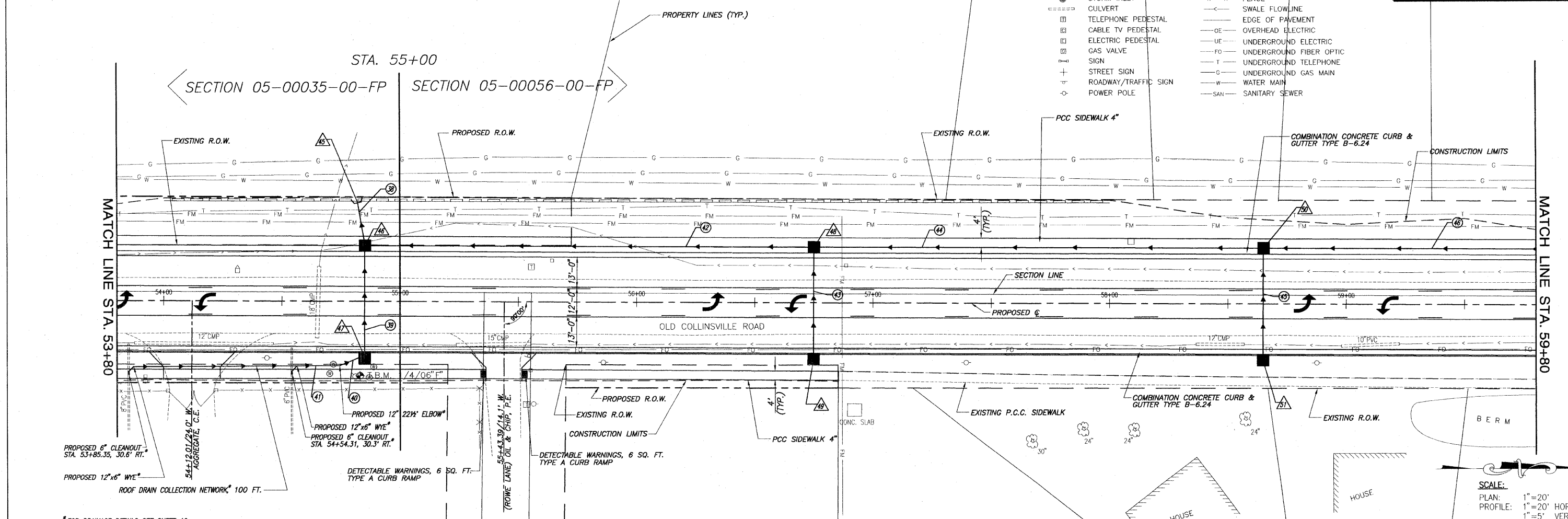


**BENCHMARKS**  
 T.B.M. 1/4"06" F: TOP OF N. MOST FLANGE BOLT ON FIRE HYDRANT ON E. SIDE OF ROAD NEXT TO MAINT. BUILDING S. OF ROWE LN. ELEV. 575.24 STA. 54+81.59, 32.48 RT.

F.A.U. ROUTE	SECTION	COUNTY	TOTAL SHEETS	SHEET NUMBER
9168	05-00035-00-FP 05-00056-00-FP	ST. CLAIR	60	13
STA 24+17.37 TO		STA. 79+10.00		
FEDERAL AID PROJECT		CONTRACT 97360		

- LEGEND**
- TREE
  - SHRUB
  - SAPLING
  - MAILBOX
  - STORM INLET
  - CULVERT
  - TELEPHONE PEDESTAL
  - CABLE TV PEDESTAL
  - ELECTRIC PEDESTAL
  - GAS VALVE
  - SIGN
  - STREET SIGN
  - ROADWAY/TRAFFIC SIGN
  - POWER POLE
  - GUY WIRE
  - WATER METER
  - WATER VALVE
  - FIBER OPTIC WARNING POST
  - FENCE
  - SWALE FLOWLINE
  - EDGE OF PAVEMENT
  - OVERHEAD ELECTRIC
  - UNDERGROUND ELECTRIC
  - UNDERGROUND FIBER OPTIC
  - UNDERGROUND TELEPHONE
  - UNDERGROUND GAS MAIN
  - WATER MAIN
  - SANITARY SEWER



**ROADWAY PLAN AND PROFILE OLD COLLINSVILLE ROAD IMPROVEMENTS**  
 SECTION 05-00035-00-FP & 05-00056-00-FP ST. CLAIR COUNTY, ILLINOIS

E:\13031-07\13031-08 Collinsville Road\13\_Plan.dwg - 10/27/2010 10:52:52 AM - Plot 1/14/11