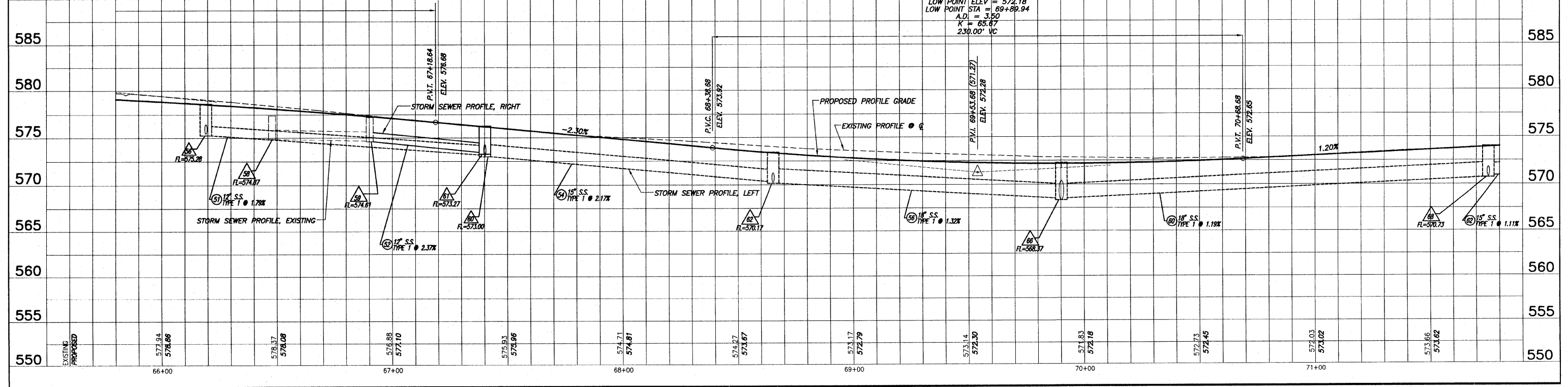
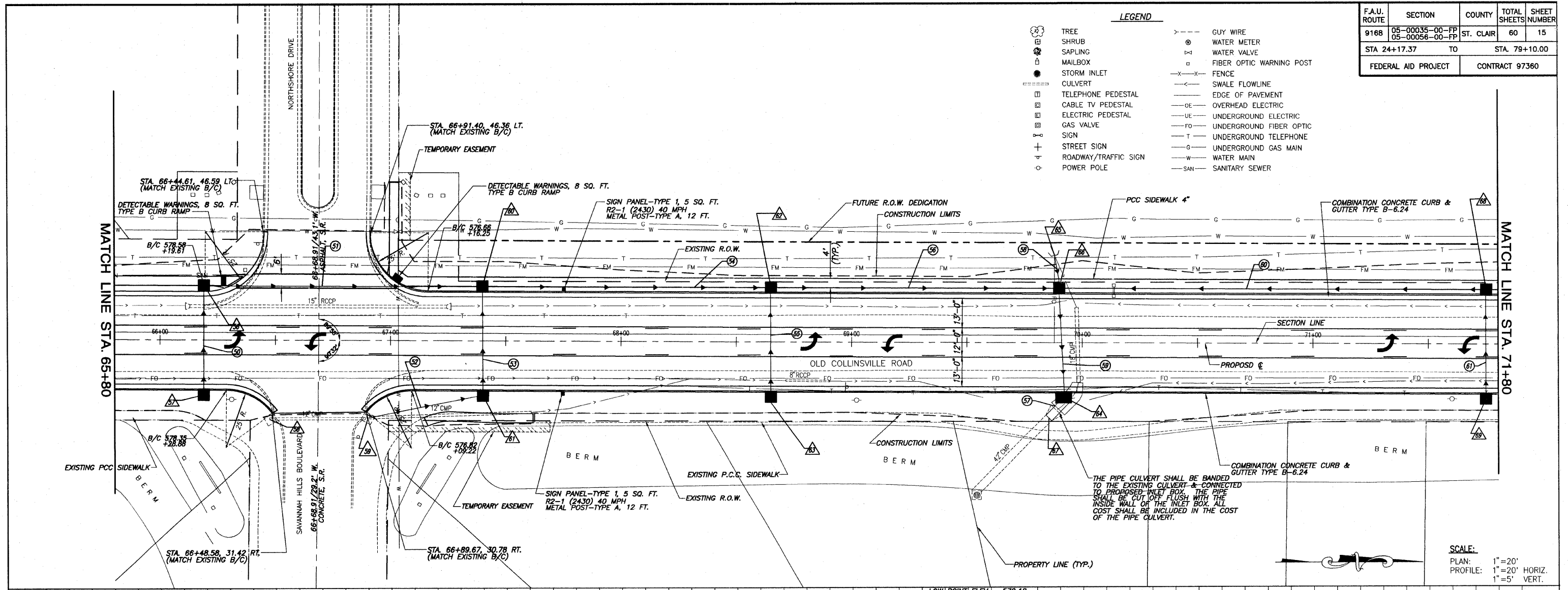


| F.A.U. ROUTE | SECTION | COUNTY | TOTAL SHEETS | SHEET NUMBER |
|------------------------------|----------------------------------|-----------|----------------|--------------|
| 9168 | 05-00035-00-FP 05-00056-00-FP | ST. CLAIR | 60 | 15 |
| STA 24+17.37 TO STA 79+10.00 | | | | |
| FEDERAL AID PROJECT | | | CONTRACT 97360 | |

LEGEND

- TREE
- SHRUB
- SAPLING
- MAILBOX
- STORM INLET
- CULVERT
- TELEPHONE PEDESTAL
- CABLE TV PEDESTAL
- ELECTRIC PEDESTAL
- GAS VALVE
- SIGN
- STREET SIGN
- ROADWAY/TRAFFIC SIGN
- POWER POLE
- GUY WIRE
- WATER METER
- WATER VALVE
- FIBER OPTIC WARNING POST
- FENCE
- SWALE FLOWLINE
- EDGE OF PAVEMENT
- OVERHEAD ELECTRIC
- UNDERGROUND ELECTRIC
- UNDERGROUND FIBER OPTIC
- UNDERGROUND TELEPHONE
- UNDERGROUND GAS MAIN
- WATER MAIN
- SANITARY SEWER



ROADWAY PLAN AND PROFILE OLD COLLINSVILLE ROAD IMPROVEMENTS
 SECTION 05-00035-00-FP & 05-00056-00-FP ST. CLAIR COUNTY, ILLINOIS