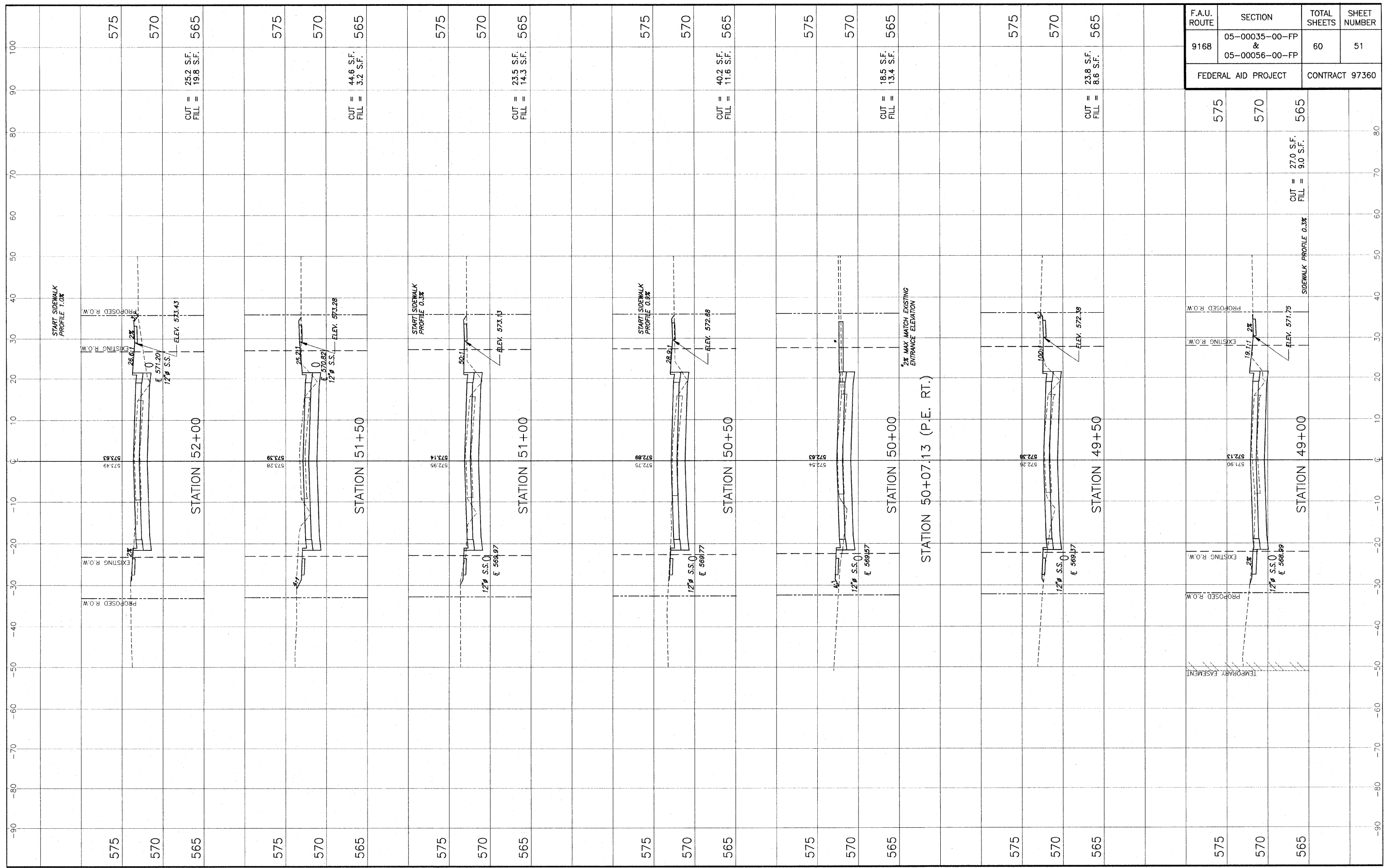


E:\11335 - Other - D:\Collinsville\11335_CROSS SECTIONS.dwg, 6/27/09 10:46:33 AM, Rousey, M.A.L.



F.A.U. ROUTE	SECTION	TOTAL SHEETS	SHEET NUMBER
9168	05-00035-00-FP & 05-00056-00-FP	60	51
FEDERAL AID PROJECT		CONTRACT 97360	

Station	CUT =	FILL =	Station	CUT =	FILL =
575			575		
570			570	27.0 S.F.	9.0 S.F.
565	25.2 S.F.	19.8 S.F.	565		
575			575		
570			570	44.6 S.F.	3.2 S.F.
565	44.6 S.F.	3.2 S.F.	565		
575			575		
570			570		
565			565	23.5 S.F.	14.3 S.F.
575			575		
570			570		
565			565	18.5 S.F.	13.4 S.F.
575			575		
570			570		
565			565	23.8 S.F.	8.6 S.F.
575			575		
570			570		
565			565		

STA. 49+00 - STA. 52+00 CROSS SECTIONS - OLD COLLINSVILLE ROAD IMPROVEMENTS
SECTION 05-00035-00-FP & 05-00056-00-FP ST. CLAIR COUNTY, ILLINOIS