

DATE	
BY	
REVISIONS	
PLANNING	
DESIGN	
CONSTRUCTION	
NO.	

DATE	
BY	
REVISIONS	
PROFILE	
GRADES CHECKED	
NO.	

LAST SAVED = 1/28/2010
 PEN TABLE = VS.tbl
 PLOT DRIVER = P:\Xerox6204\10-F:\11eapl1

BENCHMARK #1
 STA 941+50.27, 87.35 LT
 RR SPIKE IN 31" OAK TREE
 ELEVATION = 457.09

JOSEPH A. SHARDAN
 27705 CO. HWY 8
 DU BOIS, IL. 62831

JOSEPH A. SHARDAN
 27705 CO. HWY 8
 DU BOIS, IL. 62831

RALPH D. REHMUS
 27620 CO. HWY 8
 DU BOIS, IL. 62831

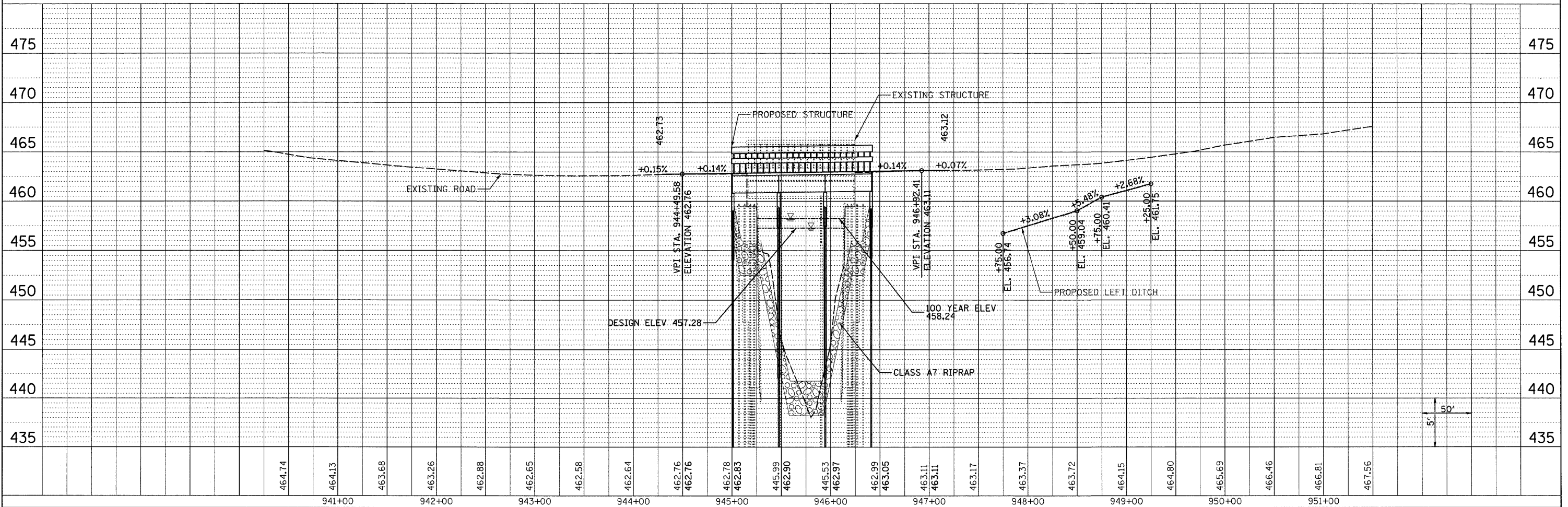
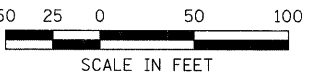
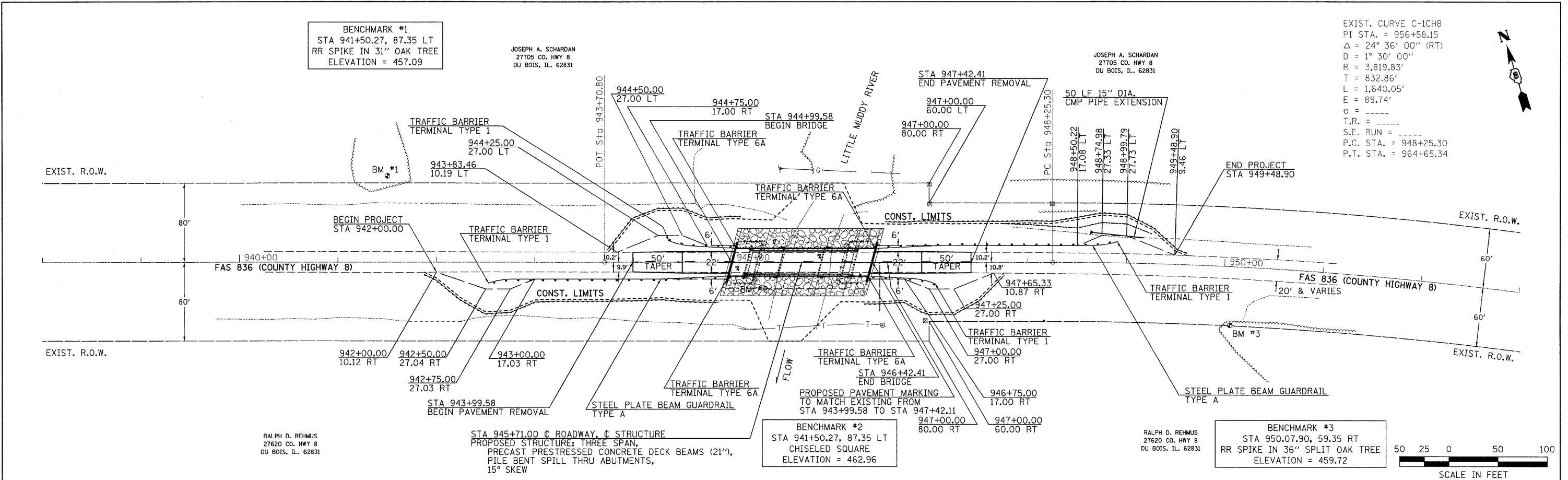
STA 945+71.00 C ROADWAY, C STRUCTURE
 PROPOSED STRUCTURE: THREE SPAN,
 PRECAST PRESTRESSED CONCRETE DECK BEAMS (21"),
 PILE BENT SPILL THRU ABUTMENTS,
 15° SKEW

BENCHMARK #2
 STA 941+50.27, 87.35 LT
 CHISELED SQUARE
 ELEVATION = 462.96

RALPH D. REHMUS
 27620 CO. HWY 8
 DU BOIS, IL. 62831

BENCHMARK #3
 STA 950.07.90, 59.35 RT
 RR SPIKE IN 36" SPLIT OAK TREE
 ELEVATION = 459.72

EXIST. CURVE C-1CH8
 PI STA. = 956+58.15
 $\Delta = 24^\circ 36' 00''$ (RT)
 $D = 1^\circ 30' 00''$
 $R = 3,819.83'$
 $T = 832.86'$
 $L = 1,640.05'$
 $E = 89.74'$
 $e =$
 $T.R. =$
 $S.E. RUN =$
 $P.C. STA. = 948+25.30$
 $P.T. STA. = 964+65.34$



FILE NAME =	USER NAME = bschmidt	DESIGNED -	REVISED -		WASHINGTON COUNTY HIGHWAY DEPARTMENT	PLAN & PROFILE COUNTY HIGHWAY 8 STA 938+00 TO STA 951+00 SCALE: 1"=50' SHEET NO. 1 OF 1 SHEETS STA. 938+00 TO STA. 951+00		F.A.S. 836 COUNTY HIGHWAY 8 CONTRACT NO. 97402 SECTION 07-00077-01-BR		TOTAL SHEETS	SHEET NO.
1:\0906300\Ced\T\Construction_Plans\006_P.dgn	CHECKED -	REVISED -	27							7	
PLOT SCALE = 50.0000' / IN.	DRAWN -	REVISED -									
PLOT DATE = 1/28/2010 12:39:03 PM	CHECKED -	REVISED -									