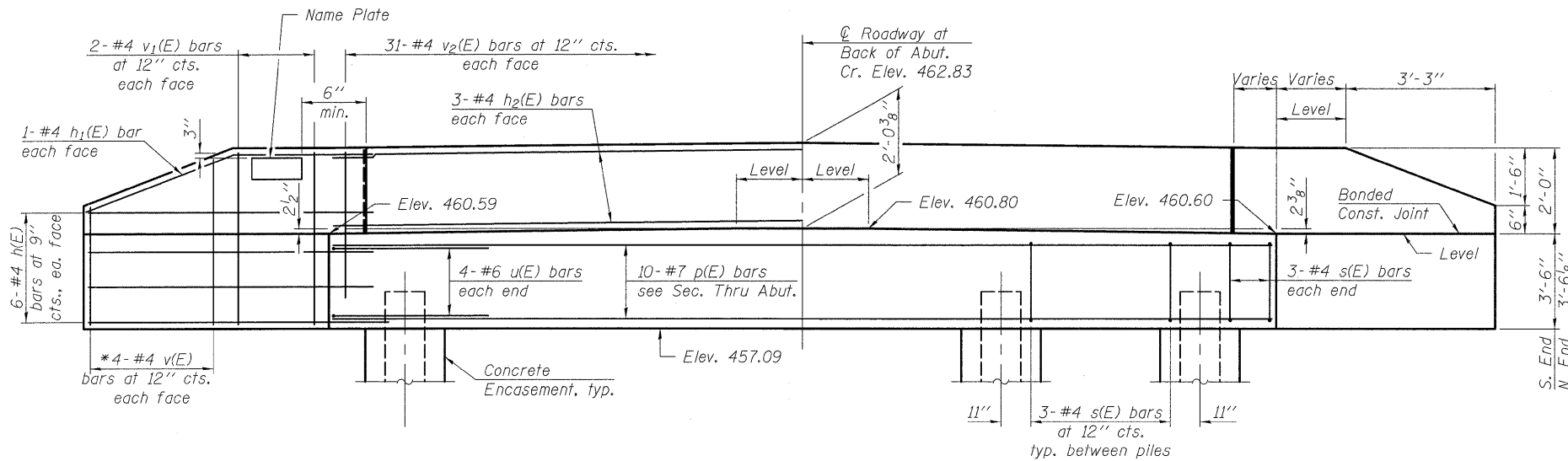
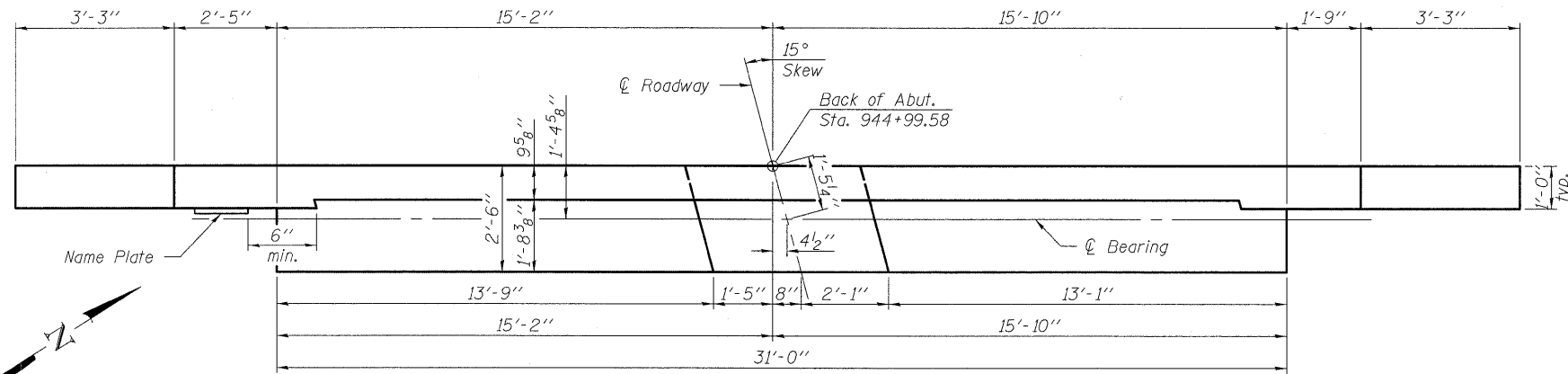


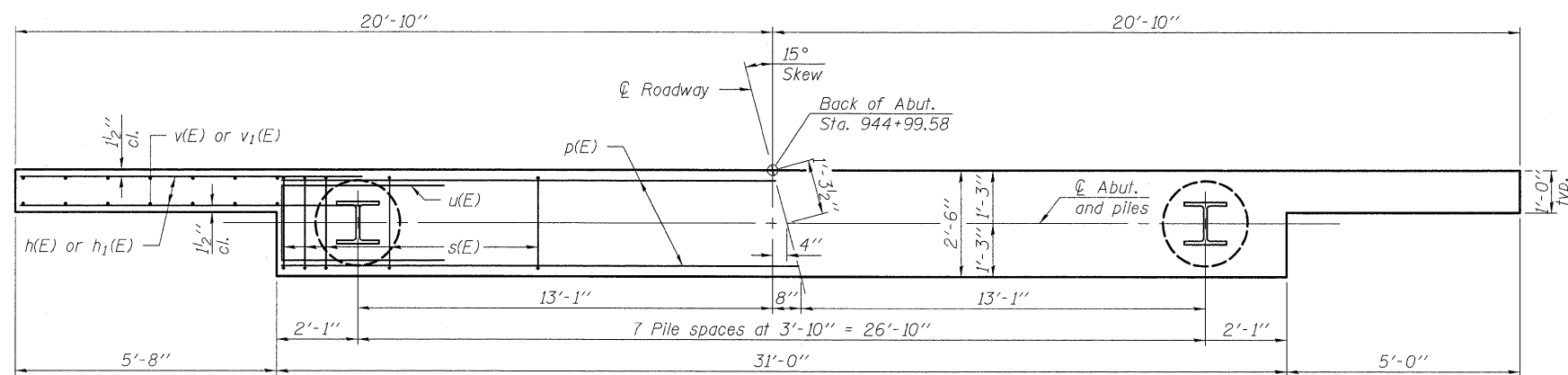
STATE OF ILLINOIS
DEPARTMENT OF TRANSPORTATION



ELEVATION



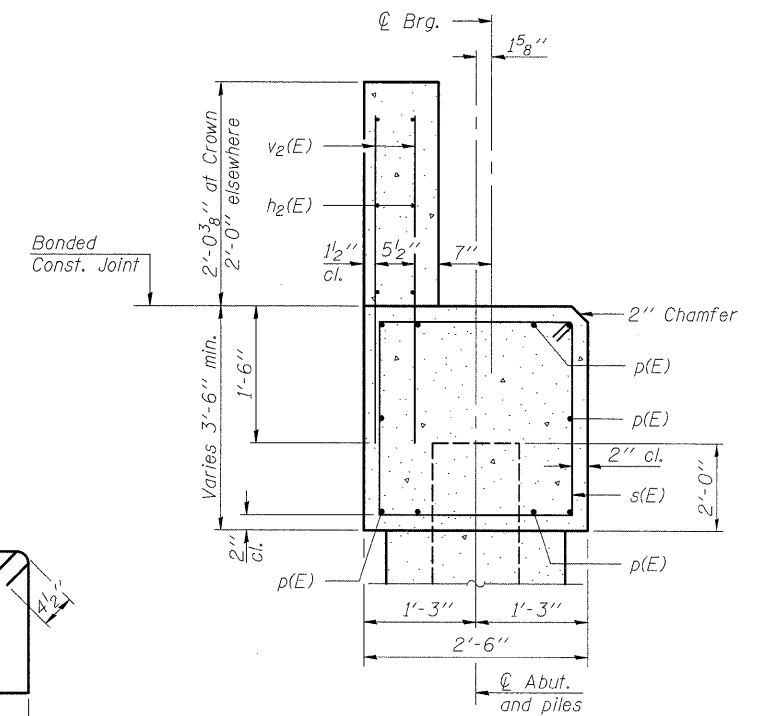
TOP VIEW



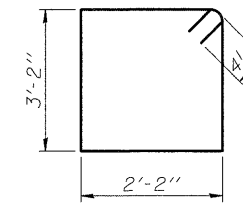
PLAN - PILE CAP

PILE DATA

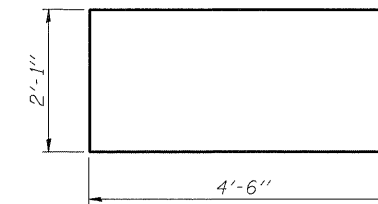
Type: HP12x63 w/Pile Shoes
Nominal Required Bearing: 497 kips
Factored Resistance Available: 199 kips
Est. Length: 37'
No. Production Piles: 7
No. Test Piles: 1



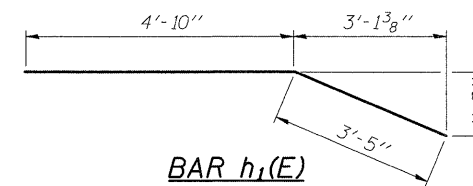
SECTION THRU ABUTMENT
(At Right Angles)



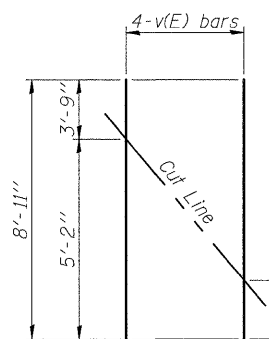
BAR s(E)



BAR u(E)



BAR h1(E)



FIELD CUTTING DIAGRAM

* Order v(E) bars full length. Cut to fit as shown and use remainder of bars in other face.

BILL OF MATERIAL

Bar	No.	Size	Length	Shape
h(E)	24	#4	8'-0"	—
h1(E)	4	#4	8'-3"	—
h2(E)	6	#4	30'-8"	—
p(E)	10	#7	30'-8"	—
s(E)	27	#4	11'-5"	□
u(E)	8	#6	11'-1"	—
v(E)	8	#4	8'-11"	—
v1(E)	8	#4	5'-2"	—
v2(E)	62	#4	3'-5"	—
Structure Excavation		Cu. Yd.	60	
Concrete Structures		Cu. Yd.	14.3	
Concrete Encasement		Cu. Yd.	2.8	
Reinforcement Bars, Epoxy Coated		Pounds	1,460	
Furnishing Steel Piles HP12x63		Foot	259	
Driving Piles		Foot	259	
Test Pile Steel HP12x63		Each	1	
Pile Shoes		Each	8	

The backwall and the portion of the wingwalls above the bonded construction joint shall be cast against the in-place beams.
Space reinforcement in cap to miss dowel rods. For dowel rod placement details, see sheet 2 of 11. For details of piles and Concrete Encasement, see sheet 10 of 11.

WEST ABUTMENT
STRUCTURE NO. 095-3260

DESIGNED	EML
CHECKED	KAK
DRAWN	EML
CHECKED	KAK

HORNER & SHIFRIN, INC.
ENGINEERS

SHEET NO. 6 11 SHEETS	F.A.S. RTE. 836	SECTION 07-00077-01-BR	COUNTY WASHINGTON	TOTAL SHEETS 27	SHEET NO. 14
	CONTRACT NO. 97402			FED. ROAD DIST. NO. ILLINOIS FED. AID PROJECT	