

STATE OF ILLINOIS
DEPARTMENT OF TRANSPORTATION

PLANS FOR PROPOSED FEDERAL AID HIGHWAY

FAU 9173 (CH 43 AND CH 45) - O'FALLON-TROY ROAD
SECTION: 04-00080-06-PV
PROJECT: HPP-3595 (001)
ST. CLAIR COUNTY
JOB NO. C-98-345-08

F.A. RTE.	SECTION	COUNTY	TOTAL SHEETS	SHEET NO.
9173	04-00080-06-PV	ST. CLAIR	144	1
STA. TO STA.				
FED. ROAD DIST. NO.		ILLINOIS	FED. AID PROJECT	
COVER SHEET				

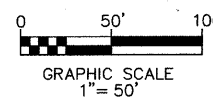
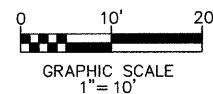
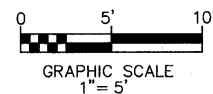
CONTRACT NO: 97418

INDEX OF SHEETS

SHEET NO.	ITEM
1	COVER SHEET
2	GENERAL NOTES
3-4	SUMMARY OF QUANTITIES
5-13	TYPICAL SECTIONS
14-15	ALIGNMENT TIES
16-17	SCHEDULES
18-28	PLAN & PROFILE SHEETS
29-45	STAGING & TRAFFIC CONTROL PLAN
46-49	EROSION CONTROL PLANS
50-69	STORM SEWER & DRAINAGE PLAN
70-74	INTERSECTION DETAILS
75-84	PAVEMENT MARKING & SIGNING PLANS
85-86	FLASHING BEACON RELOCATION PLANS
87	DRAINAGE STRUCTURE DETAILS
88	DETAILS
89-144	CROSS SECTIONS

STANDARDS

000001-05	602401-02	701201-03
280001-05	602601-02	701311-03
420001-07	602701-02	701901-01
420601-05	604001-03	720001-01
420701-02	604006-04	720006-02
482001-02	604041-02	720011-01
482006-03	606001-04	729001-01
542101-02	606006-02	780001-02
542301-02	606101-04	781001-03
542306-02	606106-04	878001-08
542401-01	606401-01	BLR 17-4
602301-02	666001-01	BLR 21-8
602306-02	701006-03	BLR 22-6

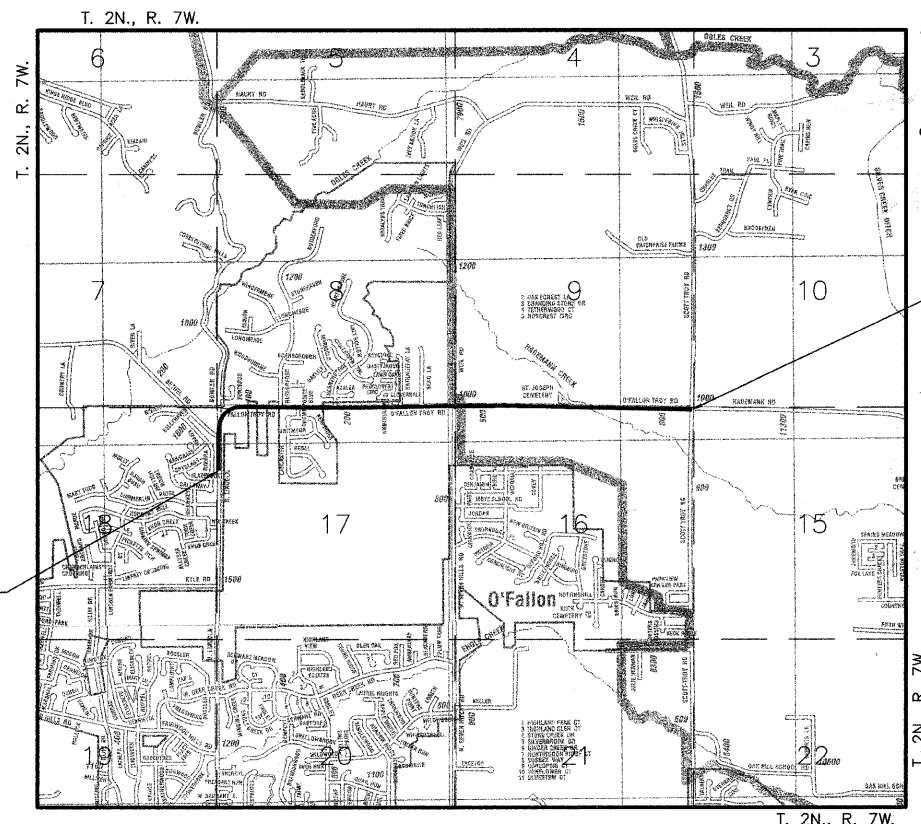


FULL SIZE PLANS HAVE BEEN PREPARED USING STANDARD ENGINEERING SCALES. REDUCED SIZED PLANS WILL NOT CONFORM TO STANDARD SCALES. IN MAKING MEASUREMENTS ON REDUCED PLANS, THE ABOVE SCALES MAY BE USED.

JOINT UTILITY LOCATING INFORMATION FOR EXCAVATIONS PHONE: 800-892-0123

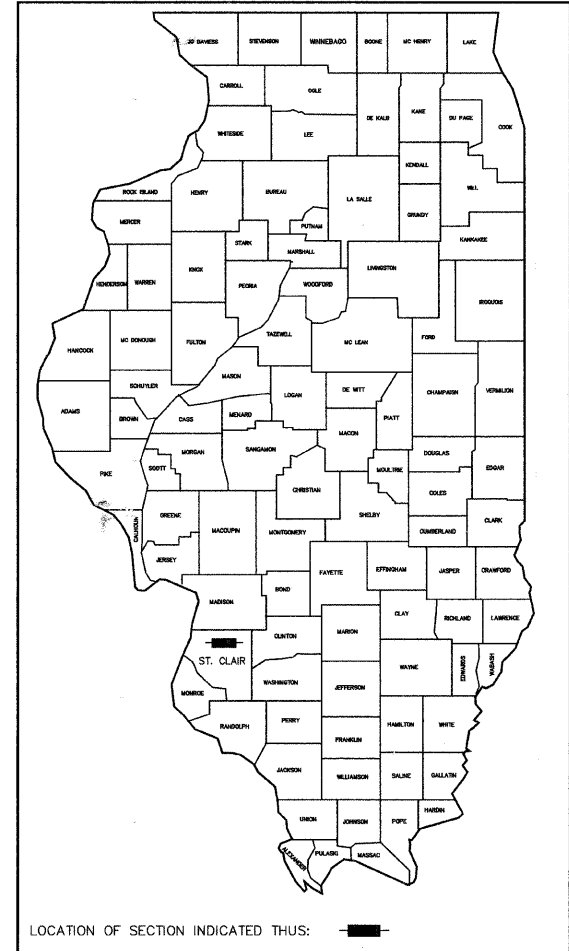
FAU ROUTE 9173 (O'FALLON - TROY ROAD)
ROADWAY CLASSIFICATION = MINOR ARTERIAL TWS-2
DESIGN SPEED = 40 MPH
CURRENT TRAFFIC (2007) = 3,800 A.D.T.
DESIGN YEAR (2027) = 8,300

SCALE IN FEET
PLAN 1" = 50'
PROFILE HORIZ. 1" = 50'
PROFILE VERT. 1" = 5'
SECTIONS HORIZ. 1" = 10'
SECTIONS VERT. 1" = 5'



LOCATION MAP
SCALE: 1" = 2000'

O'FALLON-TROY ROAD = 11638.83 FT (2.204 MILES)
BETHEL ROAD = 250.34 FT (0.047 MILES)
BOWLER ROAD = 279.64 FT (0.053 MILES)
NORTH SEVEN HILLS ROAD/WEIL ROAD = 450.00 FT (0.085 MILES)
NET LENGTH OF PROJECT = 12618.81 FT (2.390 MILES)



O'FALLON - TROY ROAD
CONSTRUCTION ENDS STA. 239+02.50
SECTION ENDS STA. 239+02.50

O'FALLON - TROY ROAD
CONSTRUCTION BEGINS STA. 122+63.79
SECTION BEGINS STA. 122+63.79

STATE OF ILLINOIS DEPARTMENT OF TRANSPORTATION

APPROVED *Darrell L. Cayes* 1/25/10

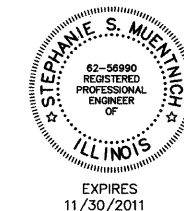
DARRELL L. CAYES, P.E., COUNTY ENGINEER

PASSED 1-27-10

Stephanie S. Muentnich
DISTRICT ENGINEER OF LOCAL ROADS & STREETS

RELEASING FOR BID BASED ON LIMITED REVIEW 1-27-10

Mary C. Lane
DEPUTY DIRECTOR OF HIGHWAYS, REGION 9 ENGINEER



Stephanie S. Muentnich DATE: 1/15/2010
STEPHANIE S. MUENTNICH
IL P.E. NO. 062-056990

